



HydroWatch

Thursday, 25 June 2026

Issue: 1523

A weekly summary relating to New Zealand hydro storage and inflows.

Compiled by Energy Link Ltd.

Storage Summary	South Island Controlled	South Island Uncontrolled	South Island Total	North Island Taupo	Total Storage
Current Storage (GWh)	2,718	591	3,309	412	3,721
Storage Change (GWh)	136	122	257	-7	250

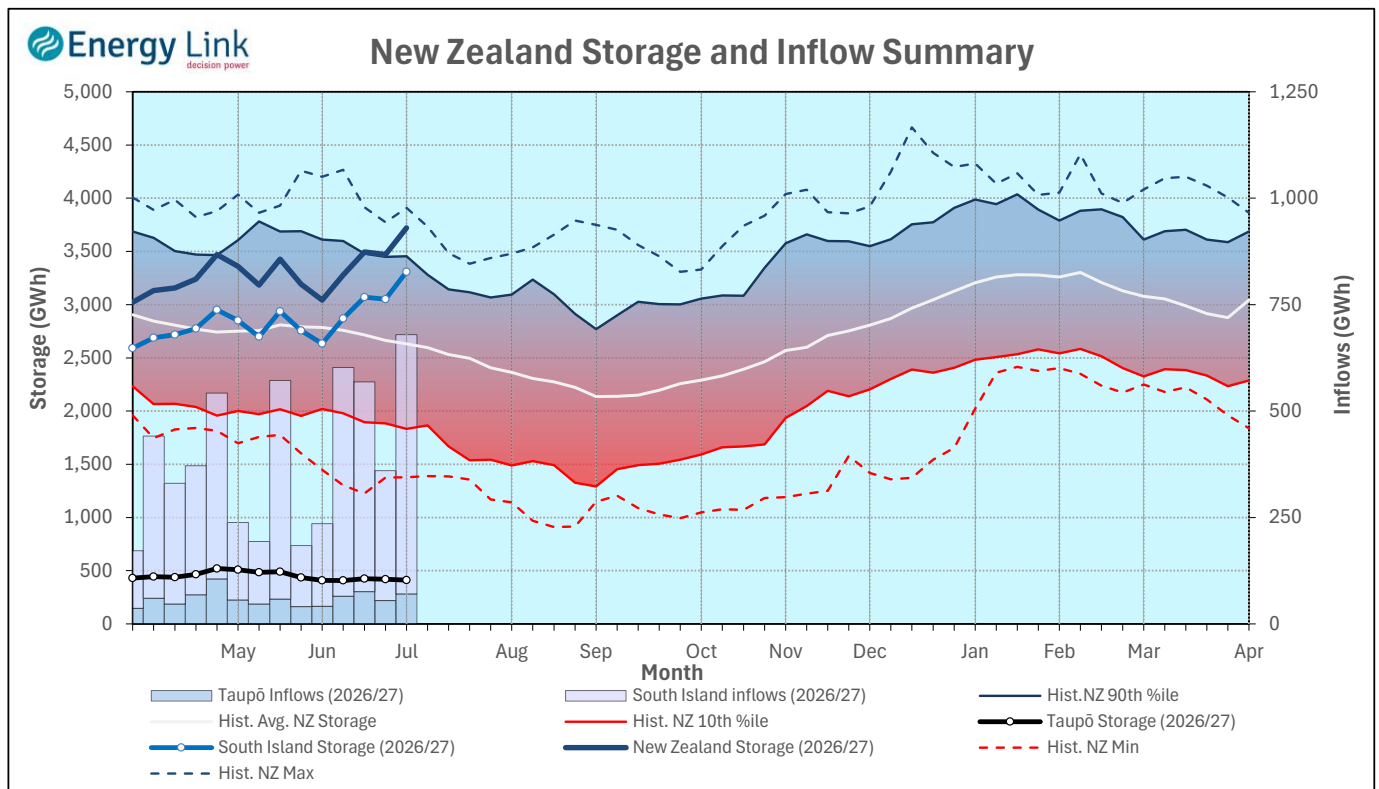
Note: SI Controlled; Takapō, Pūkaki and Hāwea: SI Uncontrolled; Manapōuri, Te Anau, Wānaka, Wakatipu

Transpower Security of Supply	South Island	North Island	New Zealand
Current Storage (GWh)	3,150	412	3,562

Note: These figures are provided to align with Transpower's Security of Supply reporting methodology. Variance from Transpower values is due to differences in generation efficiencies and contingent storage volumes.

New Zealand Summary

Total storage increased 250 GWh over the last week. South Island controlled storage increased 5.3% to 2,718 GWh; South Island uncontrolled storage increased 26% to 591 GWh; with Taupō storage decreasing 1.7% to 412 GWh.



Thursday, 25 June 2026					
	Manapōuri	Clutha	Waitaki	Waikato	NZ
Storage (GWh)					
This Week	432	434	2,443	412	3,721
Last Week	350	383	2,318	419	3,471
% Change	23.5%	13.2%	5.4%	-1.7%	7.2%
Inflow (GWh)					
This Week	196	146	267	71	679
Last Week	117	68	120	55	360
% Change	67.1%	113.3%	122.4%	29.3%	88.6%

Subscribe at www.energylink.co.nz/publications

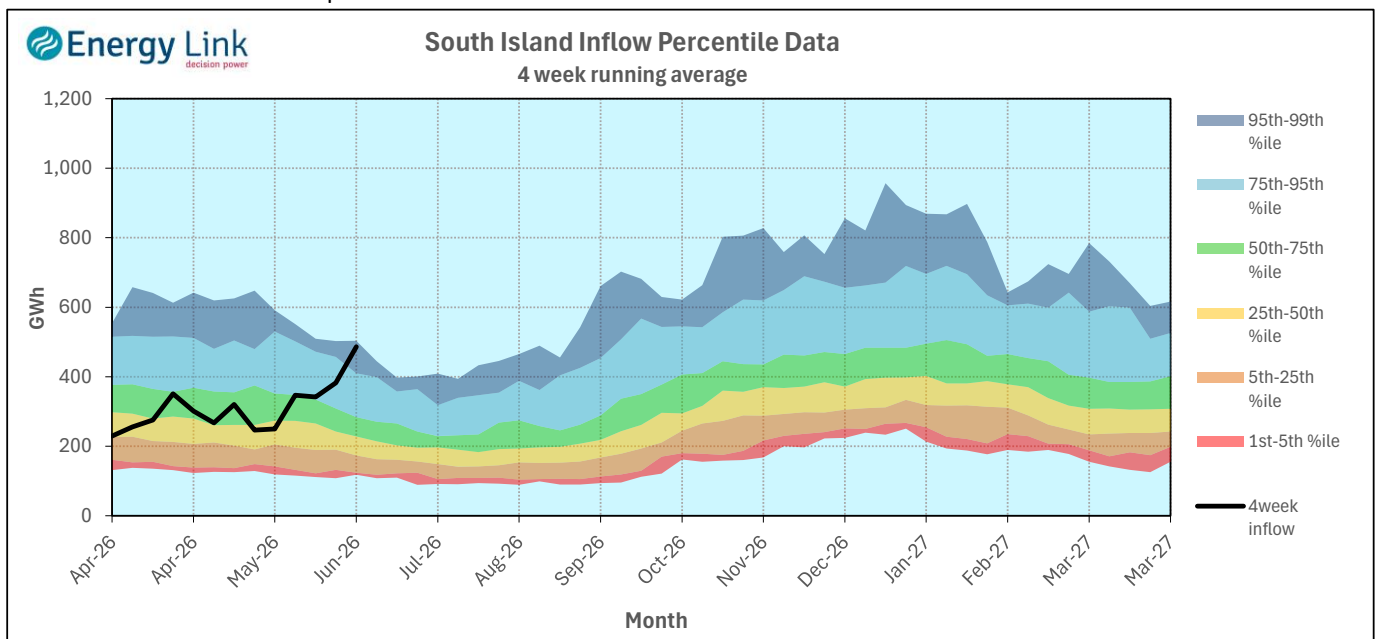
Lake Levels and Outflows

Catchment	Lake	Level (m. asl)	Storage (GWh)	Outflow (cumecs)	Outflow Change
Manapōuri	Manapōuri	178.13	134	79	42
	Te Anau	202.85	298		
Clutha	Wakatipu	310.07	62	214	43
	Wānaka	278.03	97	302	
	Hāwea	345.46	275	93	
Waitaki	Takapō	709.39	734		64
	Pūkaki	531.49	1,708		
Waikato	Taupō	356.86	412		5

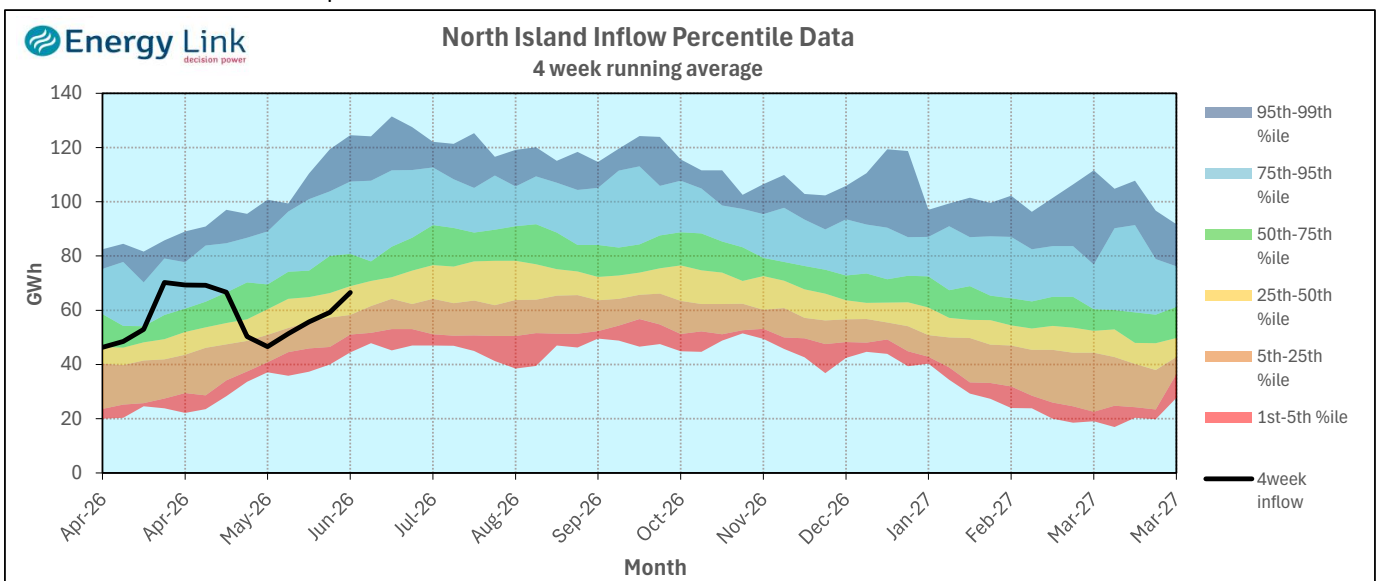
Inflow Summary

The two charts below represent where current inflows are in relation to historic inflow patterns. The percentile values have been calculated using all inflows since 1931.

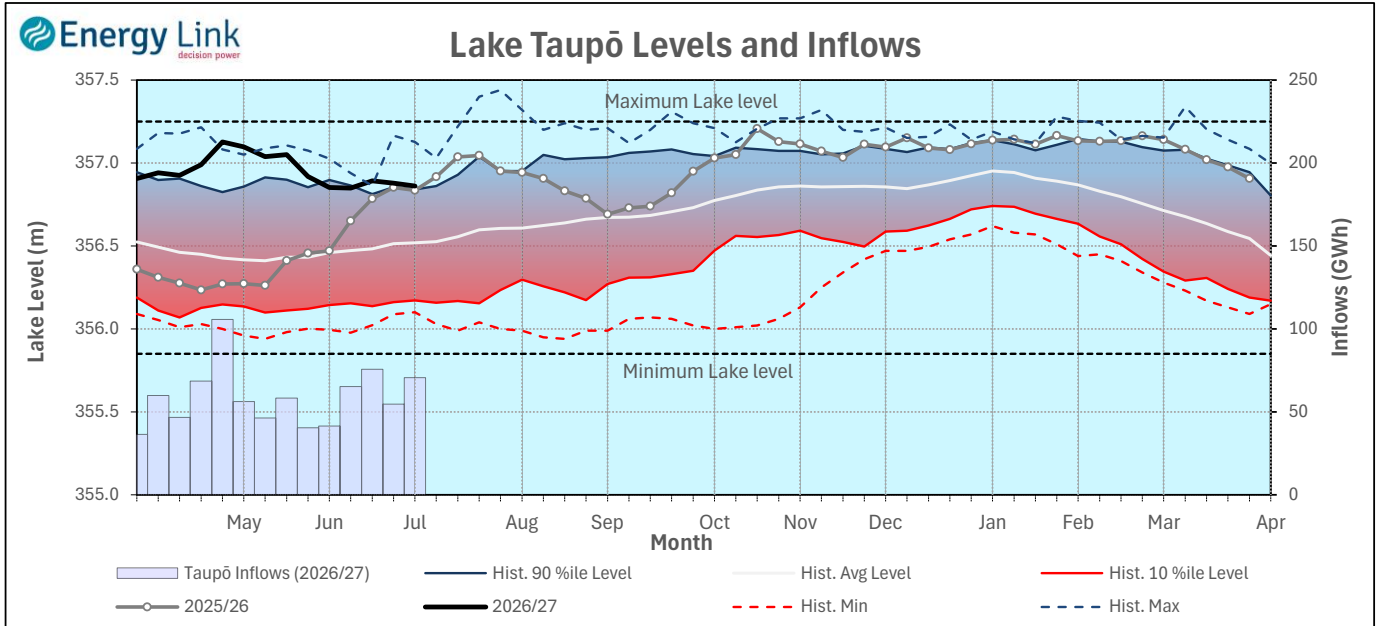
South Island Inflows - The past four weeks of S. I. inflows rank as the 3rd wettest on record.



North Island Inflows - The past four weeks of N. I. inflows rank as the 44th driest on record.



Waikato System

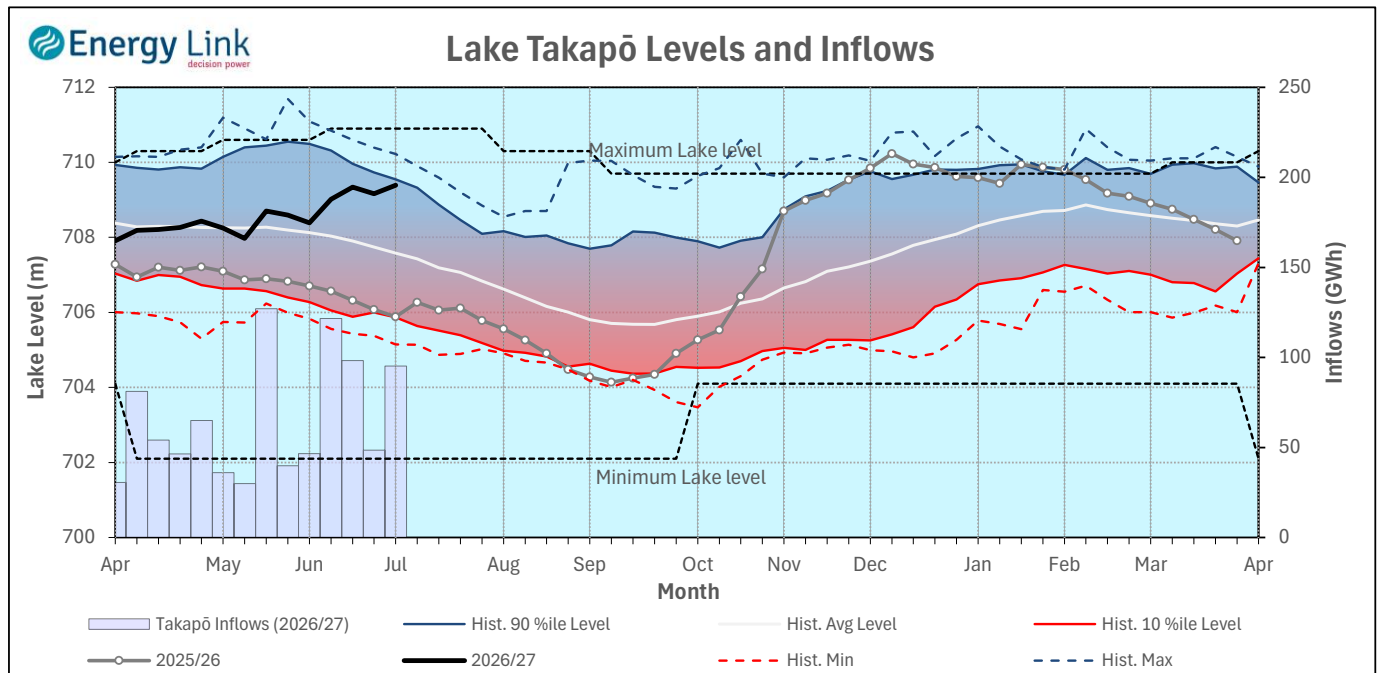


Lake Levels - Lake Taupō storage fell to 72.2% of nominal full at 412 GWh.

Inflows - Inflows increased 29.3% to 71 GWh.

Generation - Average generation increased 8.5% to 501.1 MW.

Takapō



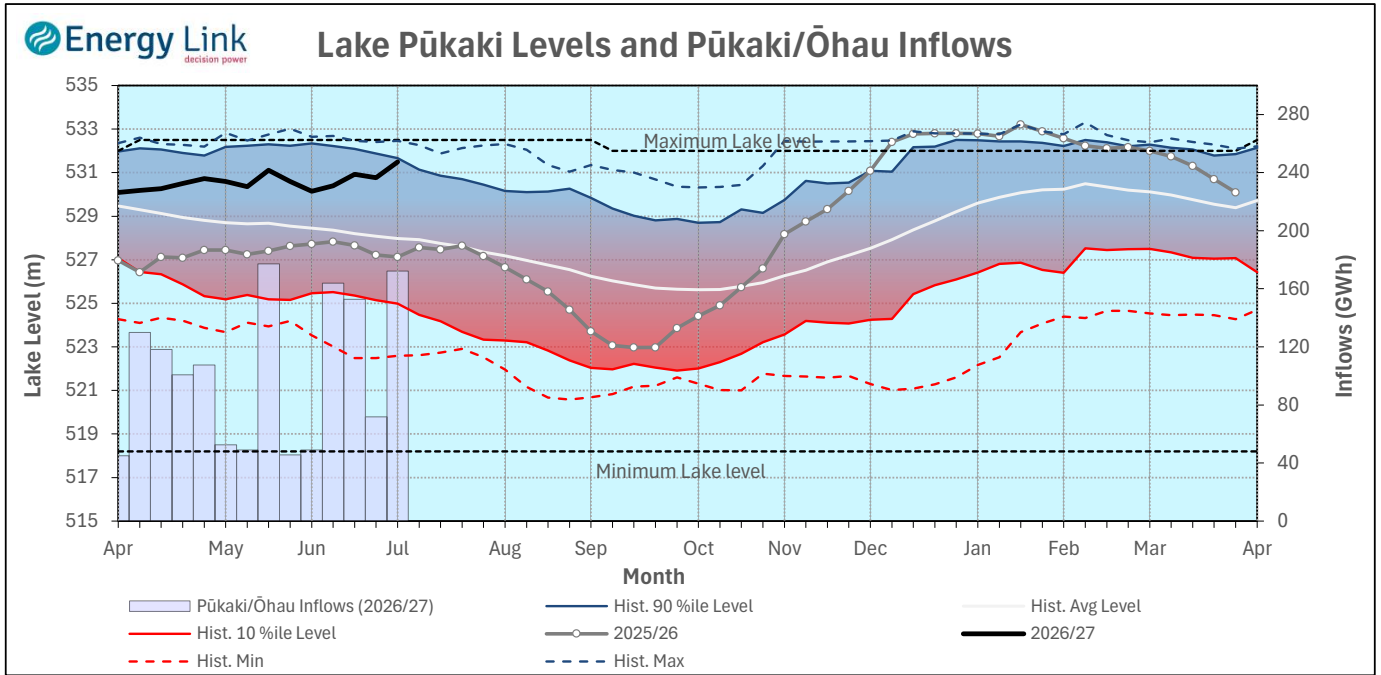
Lake Levels - Lake Takapō ended the week 86% nominally full with storage increasing to 734 GWh.

Inflows - Inflows into Takapō increased 96.2% to 95 GWh.

Generation - Average Takapō generation increased 4.4% to 151.9 MW.

Hydro Spill - Lake Takapō did not spill.

Waitaki System



Lake Levels - Lake Pūkaki ended the week 92% nominally full with storage increasing to 1,708 GWh.

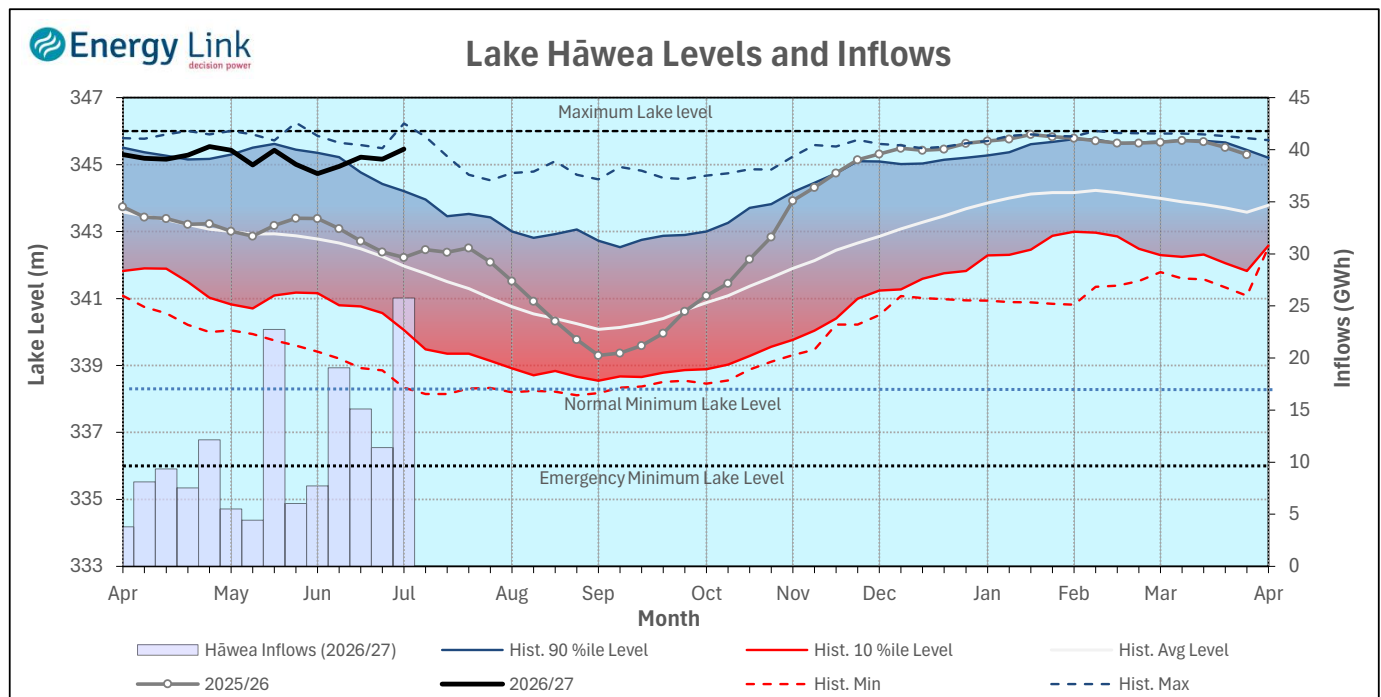
Inflows - Inflows into the Waitaki System increased 140.1% to 172 GWh.

Generation - Average Waitaki generation decreased 4.7% to 874 MW.

Hydro Spill - Lake Pūkaki did not spill.

River Flows - Flows from the Ahuriri River increased to 60.5 cumecs while Waitaki River flows were higher than last week averaging 397.2 cumecs.

Clutha System



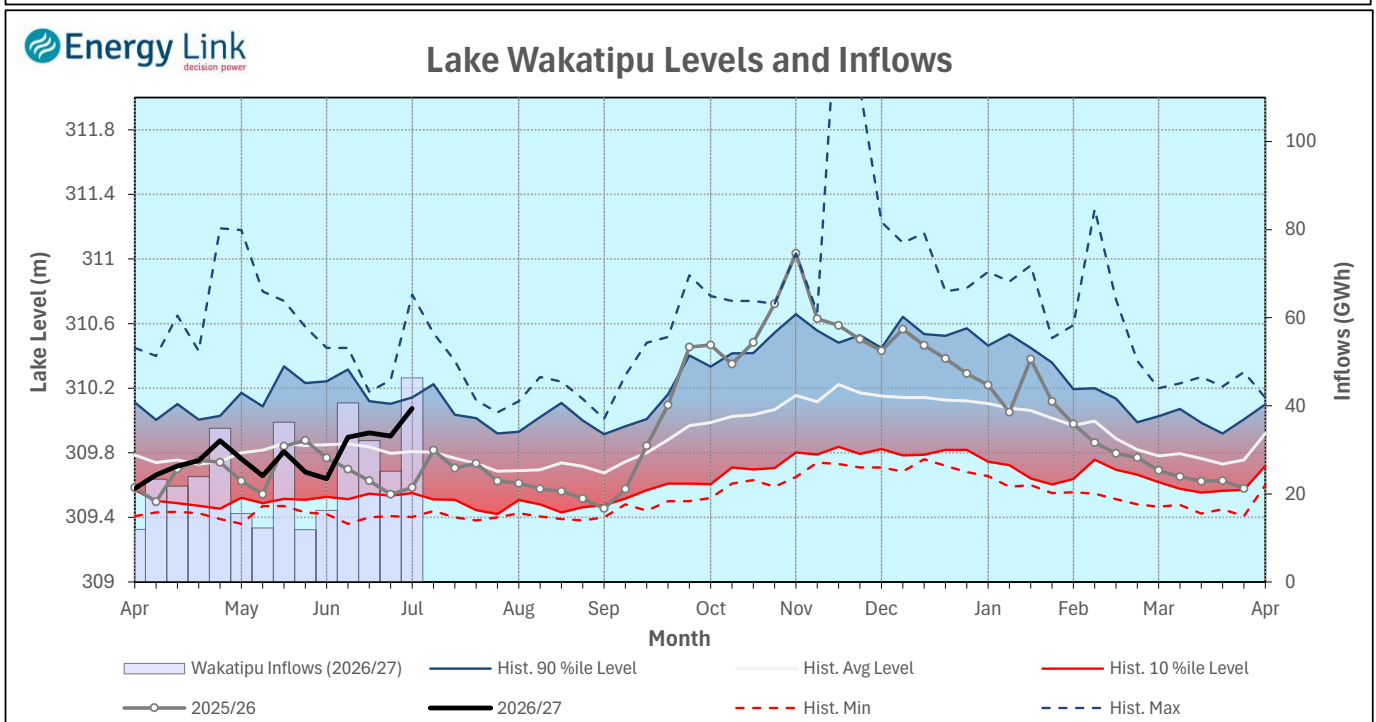
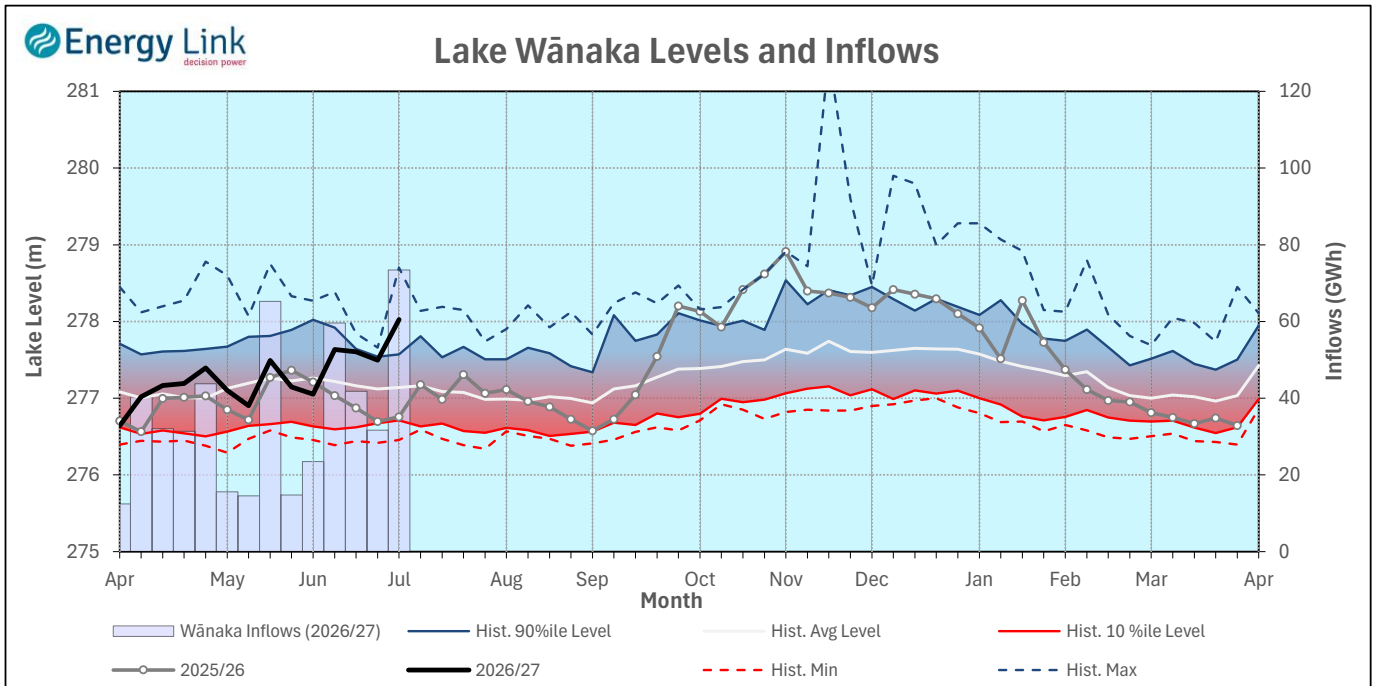
Lake Levels - Total storage for the Clutha System increased by 13.2% to 434 GWh. Lakes Hāwea, Wānaka and Wakatipu ended the week 93.1%, 84.5% and 58.9% nominally full respectively.

Inflows - Total Inflows into the Clutha System 113.3% higher at 146 GWh.

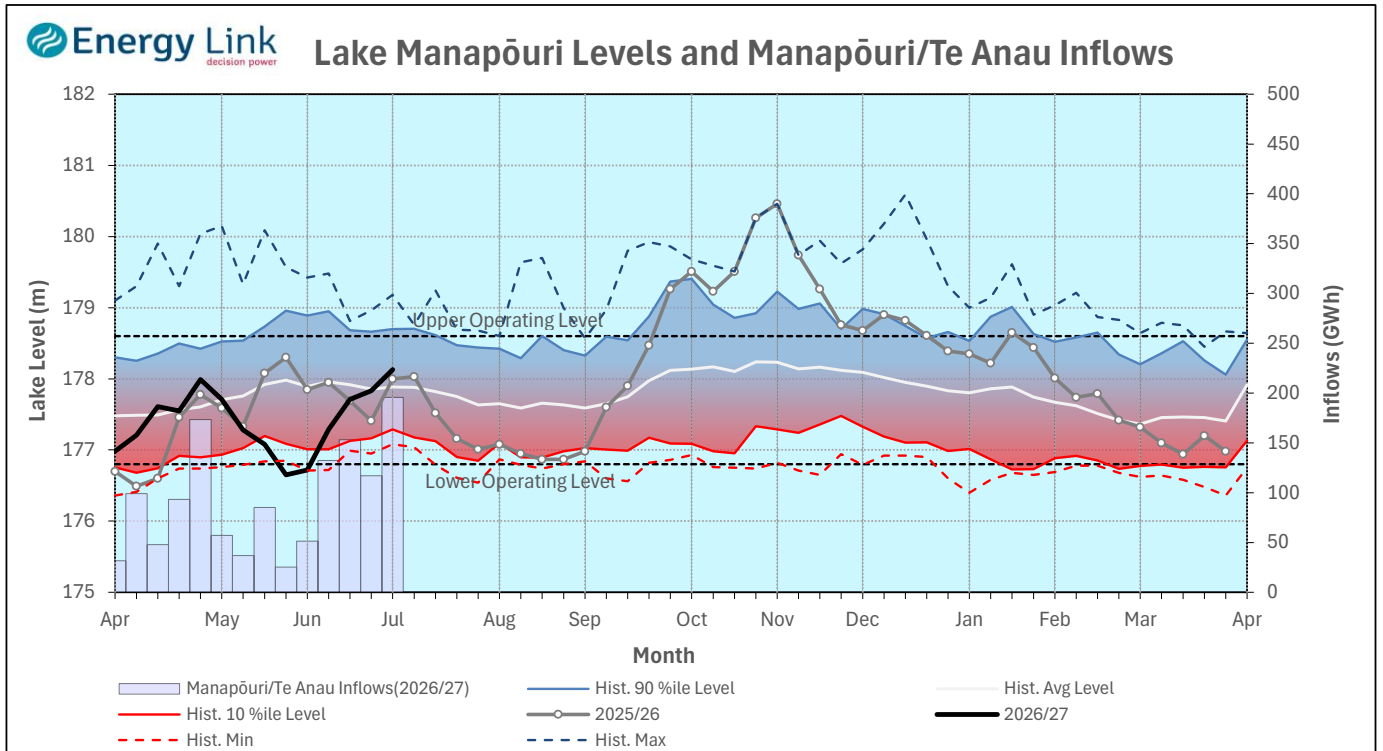
Generation - Average generation was 20.9% higher at 620 MW.

Hydro Spill - Estimate Spill is 17.3 cumecs.

River Flows - Total outflows from the lakes and Shotover River increased to 687 cumecs. This comprised of 93 cumecs from Lake Hāwea, 302 cumecs from Lake Wānaka, 214 cumecs from Lake Wakatipu and 78 cumecs from the Shotover River.



Manapōuri System



Lake Levels - Total storage for the Manapōuri System increased by 23.5% to 432 GWh with Lake Manapōuri ending the week 82.7% nominally full and Lake Te Anau ending the week 108.2% nominally full.

Inflows - Total inflows into the Manapōuri System increased 67.1% to 196 GWh.

Generation - Average generation was 11.8% higher at 572 MW.

Hydro Spill - Estimated spill at the Māraroa Weir was 79 cumecs.

Operating Range - Lake Manapōuri is operating in the upper end of its 'Main operating range' while Lake Te Anau is operating in the lower end of its 'High operating range'.

