

# HydroWatch

Thursday, 4 June 2026

Issue: 1520

A weekly summary relating to New Zealand hydro storage and inflows.

Compiled by Energy Link Ltd.

Storage Summary	South Island Controlled	South Island Uncontrolled	South Island Total	North Island Taupo	Total Storage
Current Storage (GWh)	2,508	363	2,871	407	3,278
Storage Change (GWh)	109	127	236	-1	235

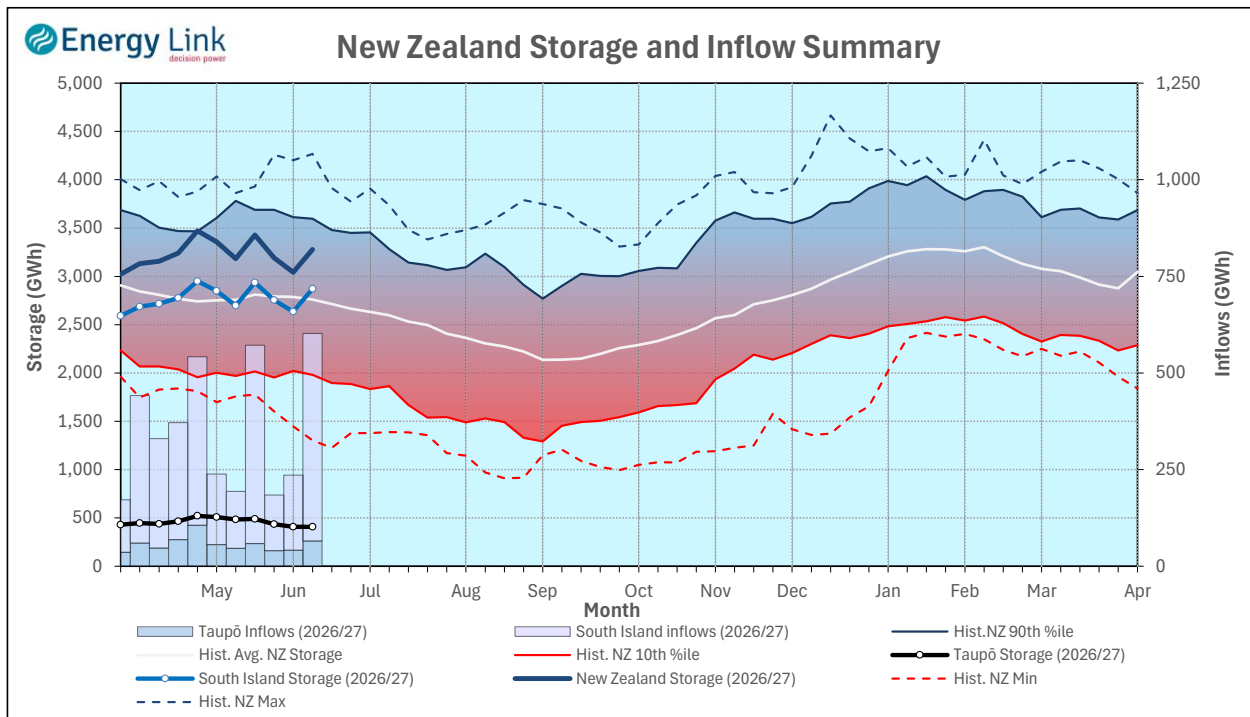
Note: SI Controlled; Takapō, Pūkaki and Hāwea: SI Uncontrolled; Manapōuri, Te Anau, Wānaka, Wakatipu

Transpower Security of Supply	South Island	North Island	New Zealand
Current Storage (GWh)	2,745	407	3,152

Note: These figures are provided to align with Transpower's Security of Supply reporting methodology. Variance from Transpower values is due to differences in generation efficiencies and contingent storage volumes.

### New Zealand Summary

Total storage increased 235 GWh over the last week. South Island controlled storage increased 4.5% to 2,508 GWh; South Island uncontrolled storage increased 54% to 363 GWh; with Taupō storage decreasing 0.3% to 407 GWh.



Thursday, 4 June 2026					
	Manapōuri	Clutha	Waitaki	Waikato	NZ
Storage (GWh)					
<b>This Week</b>	237	382	2,252	407	3,278
Last Week	158	325	2,152	409	3,044
% Change	49.7%	17.5%	4.7%	-0.3%	7.7%
Inflow (GWh)					
<b>This Week</b>	132	119	285	65	602
Last Week	51	47	96	41	236
% Change	157.5%	151.6%	198.6%	57.6%	155.5%

Subscribe at [www.energylink.co.nz/publications](http://www.energylink.co.nz/publications)

Lake Levels and Outflows

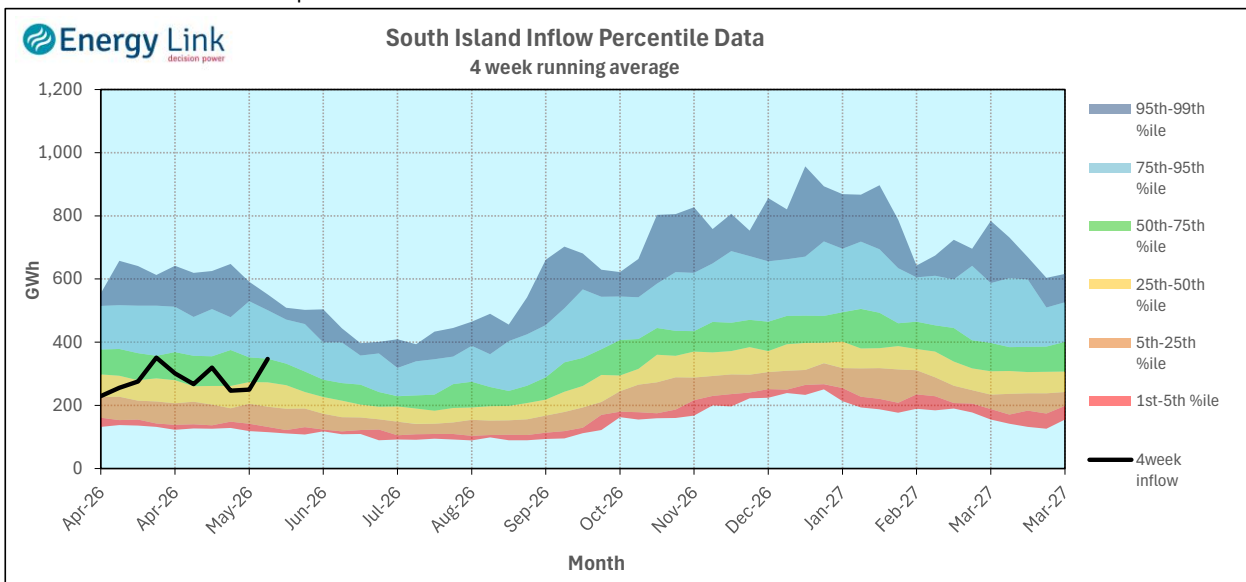
Catchment	Lake	Level (m. asl)	Storage (GWh)	Outflow (cumecs)
Manapōuri	Manapōuri	177.29	84	27
	Te Anau	201.88	153	
Clutha	Wakatipu	309.90	49	136
	Wānaka	277.64	77	196
	Hāwea	344.95	255	70
Waitaki	Takapō	709.02	694	
	Pūkaki	530.39	1,558	
Waikato	Taupō	356.85	407	

Outflow Change
6
12
15
-47

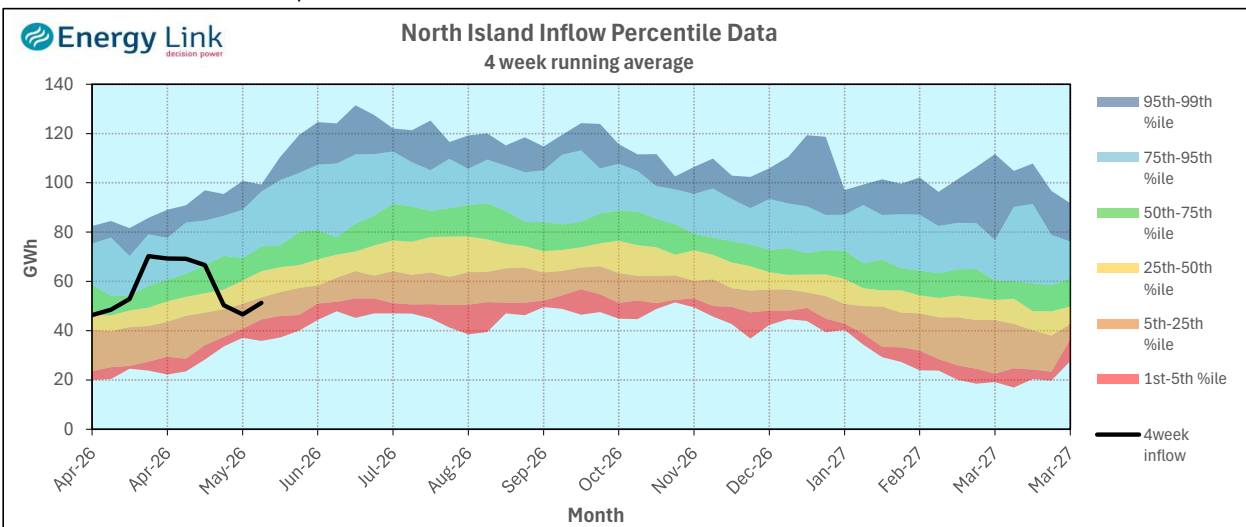
Inflow Summary

The two charts below represent where current inflows are in relation to historic inflow patterns. The percentile values have been calculated using all inflows since 1931.

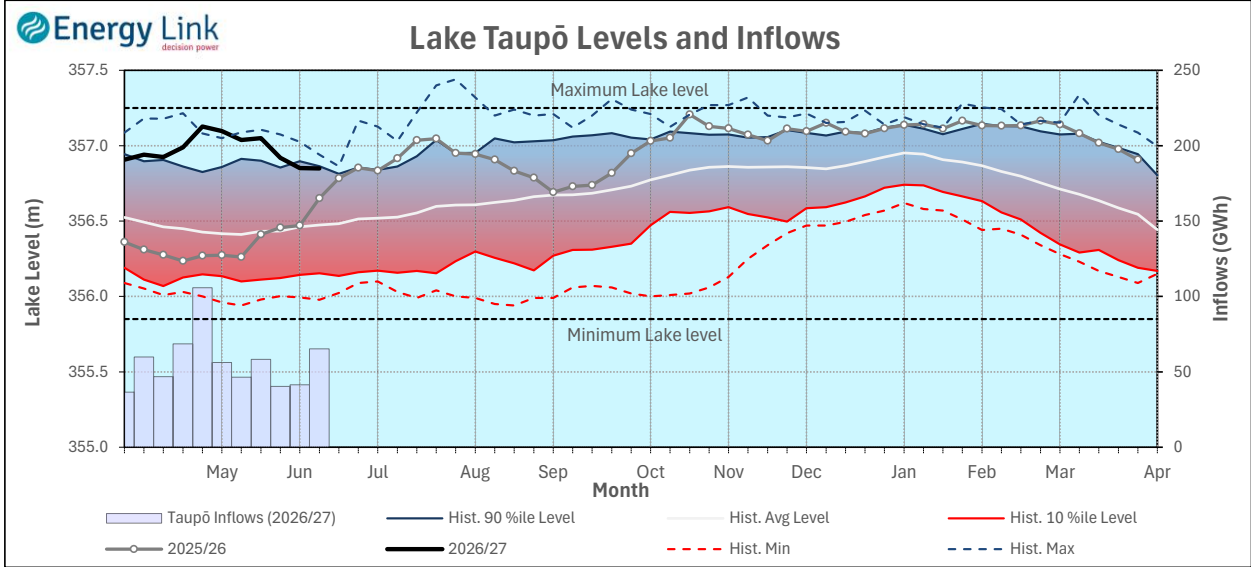
**South Island Inflows** - The past four weeks of S. I. inflows rank as the 26th wettest on record.



**North Island Inflows** - The past four weeks of N. I. inflows rank as the 20th driest on record.



### Waikato System

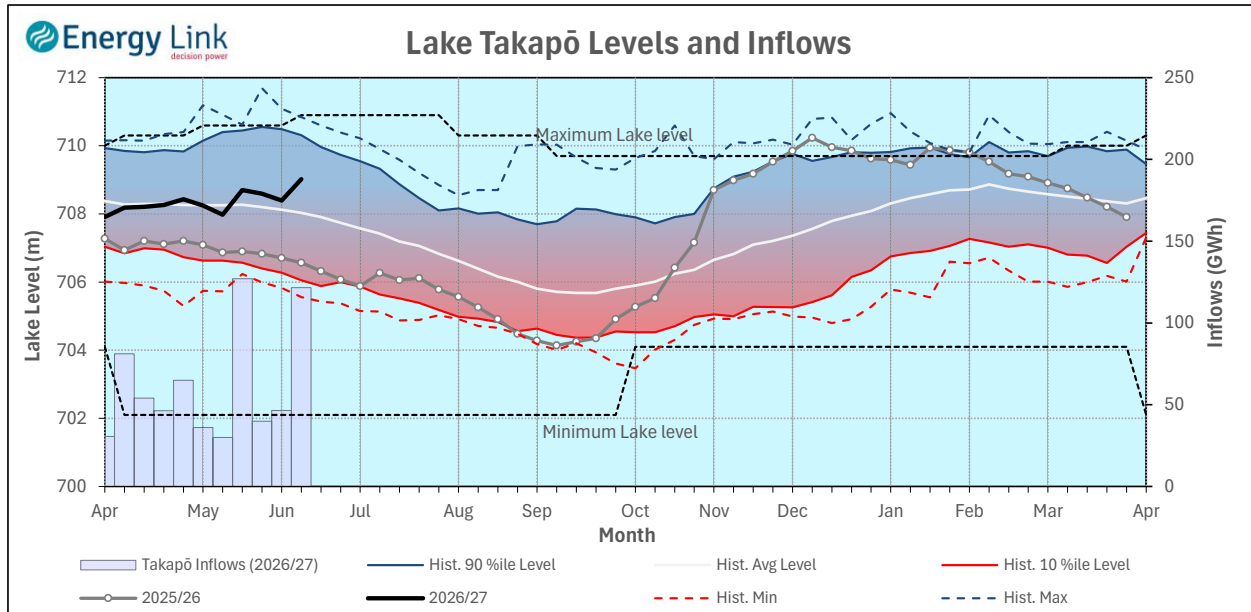


**Lake Levels** - Lake Taupō storage fell to 71.4% of nominal full at 407 GWh.

**Inflows** - Inflows increased 57.6% to 65 GWh.

**Generation** - Average generation increased 0.5% to 481 MW.

### Takapō



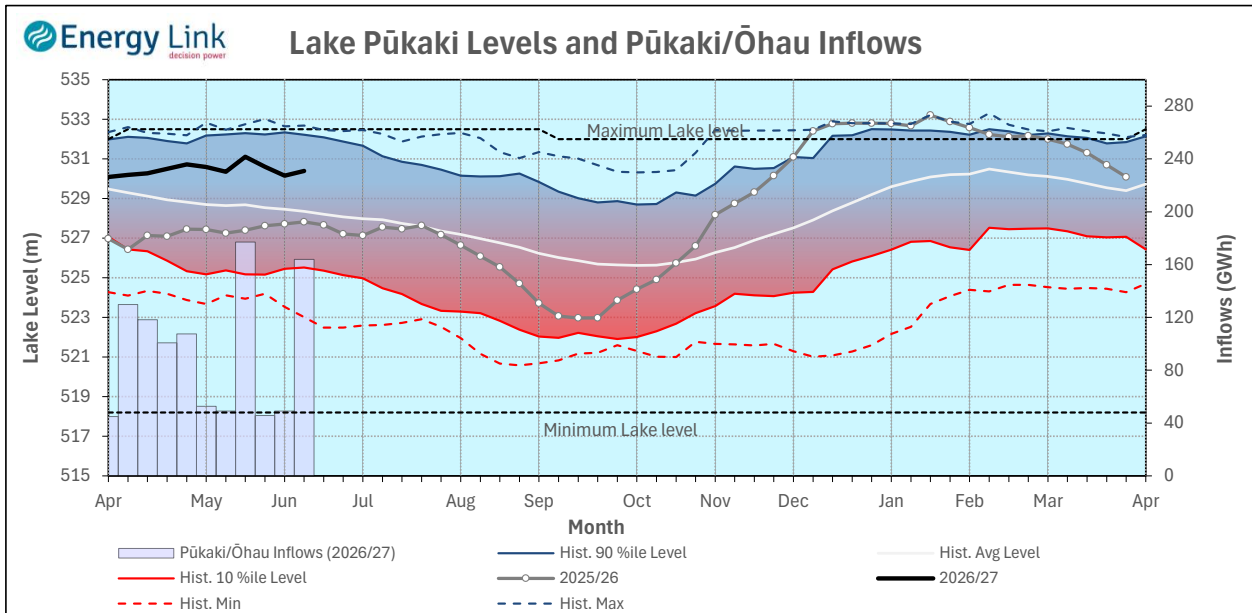
**Lake Levels** - Lake Takapō ended the week 85% nominally full with storage increasing to 694 GWh.

**Inflows** - Inflows into Takapō increased 161.2% to 122 GWh.

**Generation** - Average Takapō generation decreased 21.5% to 114.7 MW.

**Hydro Spill** - Lake Takapō did not spill.

### Waitaki System



**Lake Levels** - Lake Pūkaki ended the week 84% nominally full with storage increasing to 1,558 GWh.

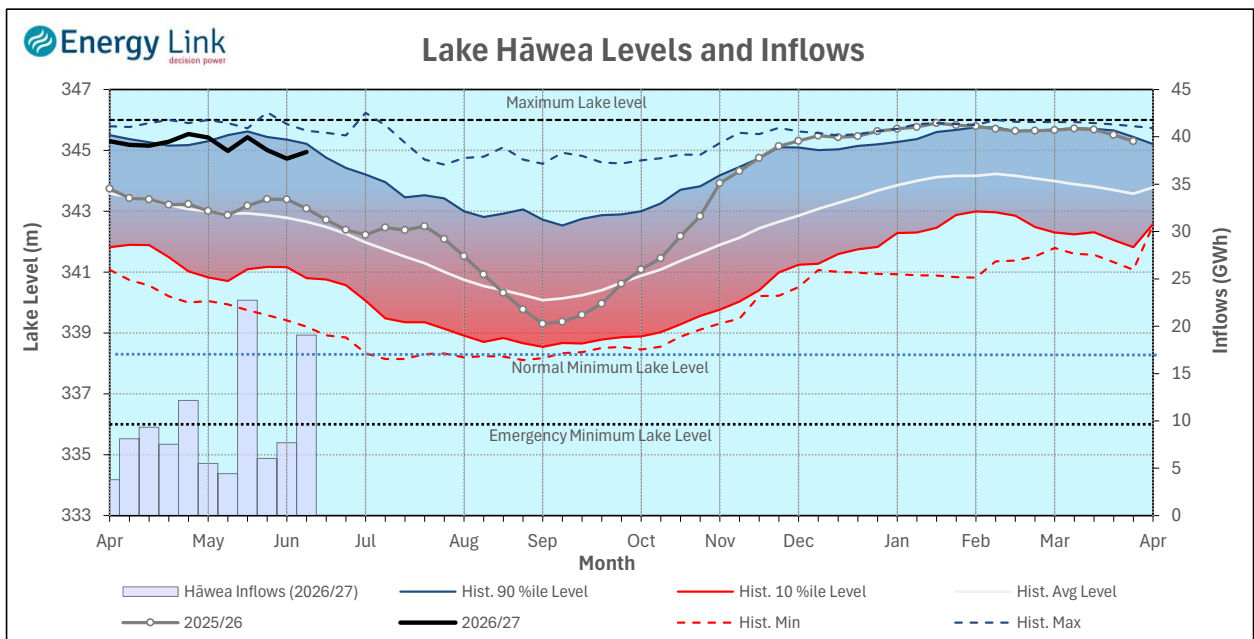
**Inflows** - Inflows into the Waitaki System increased 234.1% to 164 GWh.

**Generation** - Average Waitaki generation decreased 4.2% to 1,009 MW.

**Hydro Spill** - Lake Pūkaki did not spill.

**River Flows** - Flows from the Ahuriri River increased to 31.7 cumecs while Waitaki River flows were lower than last week averaging 393.7 cumecs.

### Clutha System



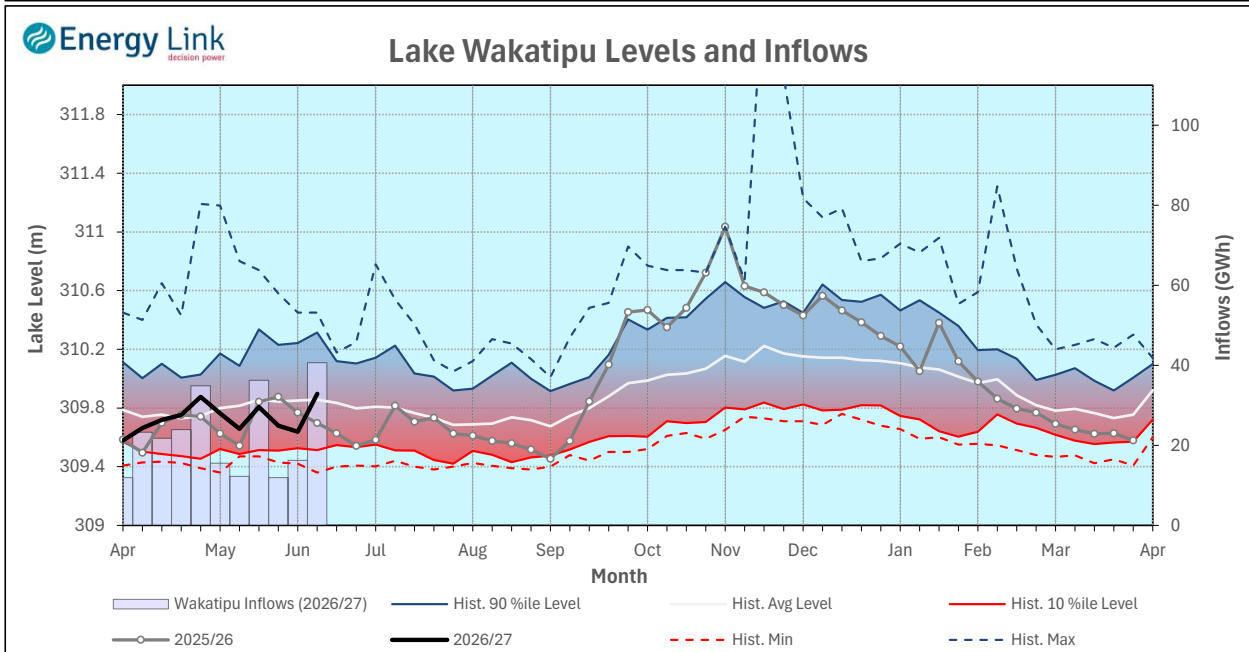
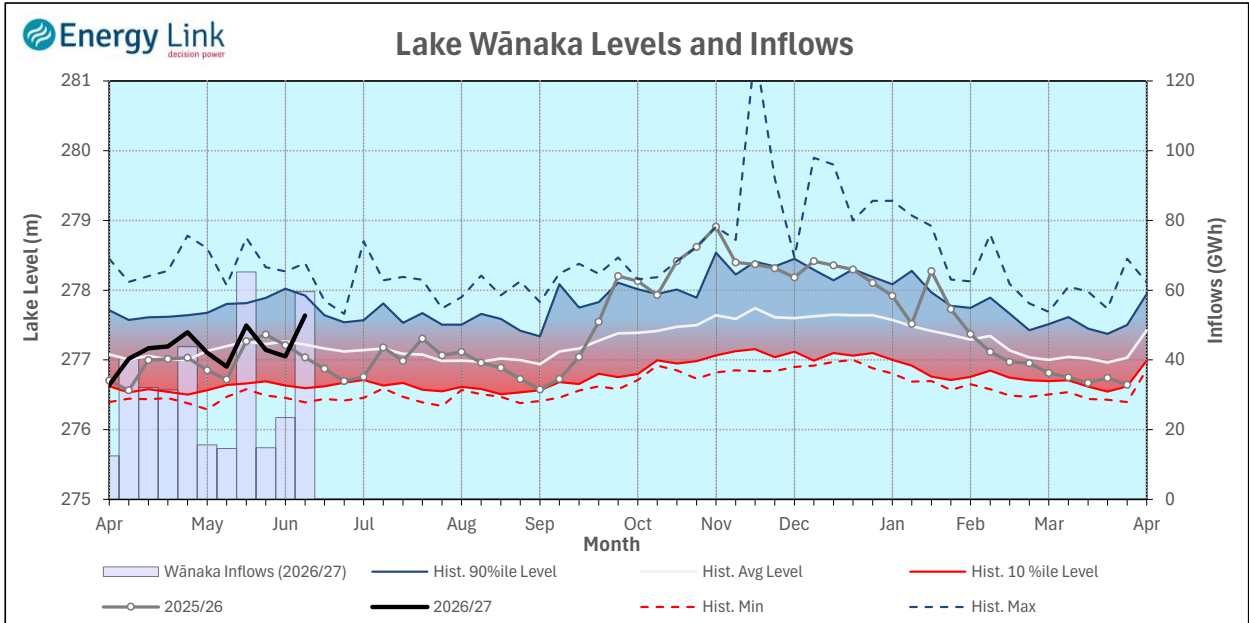
**Lake Levels** - Total storage for the Clutha System increased by 17.5% to 382 GWh. Lakes Hāwea, Wānaka and Wakatipu ended the week 86.5%, 67.6% and 46.2% nominally full respectively.

**Inflows** - Total Inflows into the Clutha System 151.6% higher at 119 GWh.

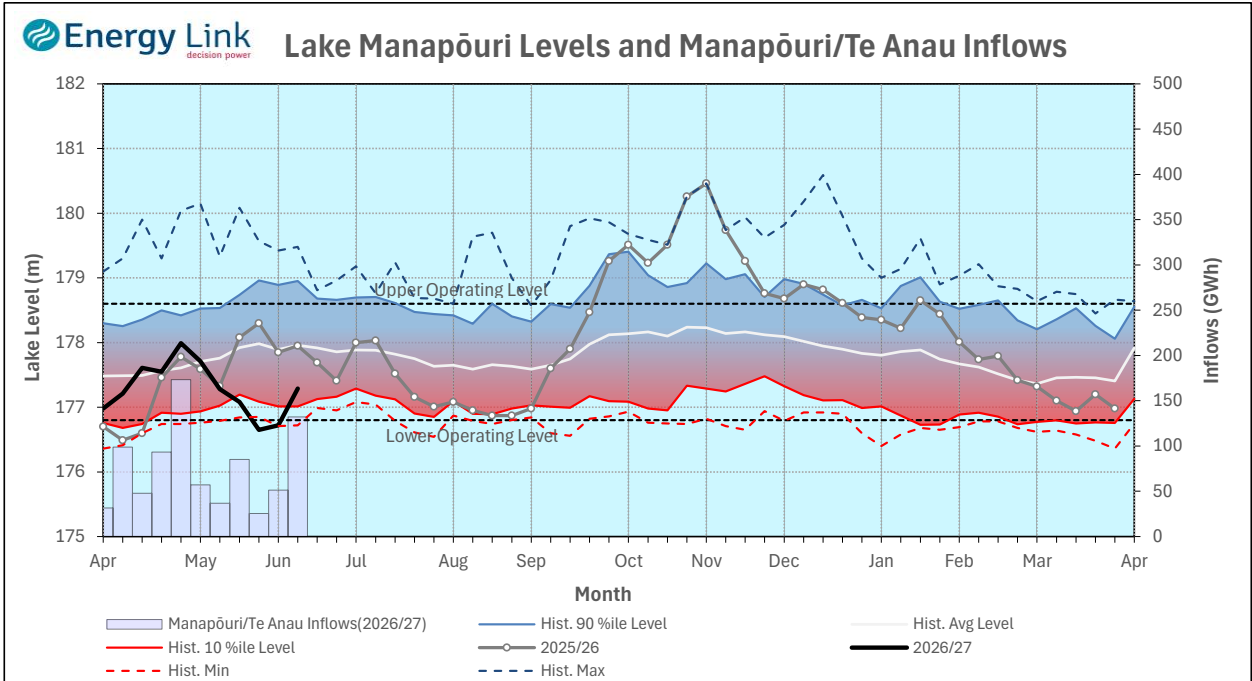
**Generation** - Average generation was 1.4% lower at 422 MW.

**Hydro Spill** - There was no estimated spill

**River Flows** - Total outflows from the lakes and Shotover River remained steady at 450.6 cumecs. This comprised of 70 cumecs from Lake Hāwea, 196 cumecs from Lake Wānaka, 136 cumecs from Lake Wakatipu and 49 cumecs from the Shotover River.



### Manapōuri System



**Lake Levels** - Total storage for the Manapōuri System increased by 49.7% to 237 GWh with Lake Manapōuri ending the week 51.9% nominally full and Lake Te Anau ending the week 55.4% nominally full.

**Inflows** - Total inflows into the Manapōuri System increased 157.5% to 132 GWh.

**Generation** - Average generation was 23.3% lower at 319 MW.

**Hydro Spill** - Estimated spill at the Māraroa Weir was 26.6 cumecs.

**Operating Range** - Lakes Manapōuri and Te Anau are operating in the lower end of their respective 'Main operating range'.

