

HydroWatch

Thursday, 23 April 2026

Issue: 1514

A weekly summary relating to New Zealand hydro storage and inflows.

Compiled by Energy Link Ltd.

Storage Summary	South Island Controlled	South Island Uncontrolled	South Island Total	North Island Taupo	Total Storage
Current Storage (GWh)	2,513	438	2,951	521	3,471
Storage Change (GWh)	59	116	175	56	231

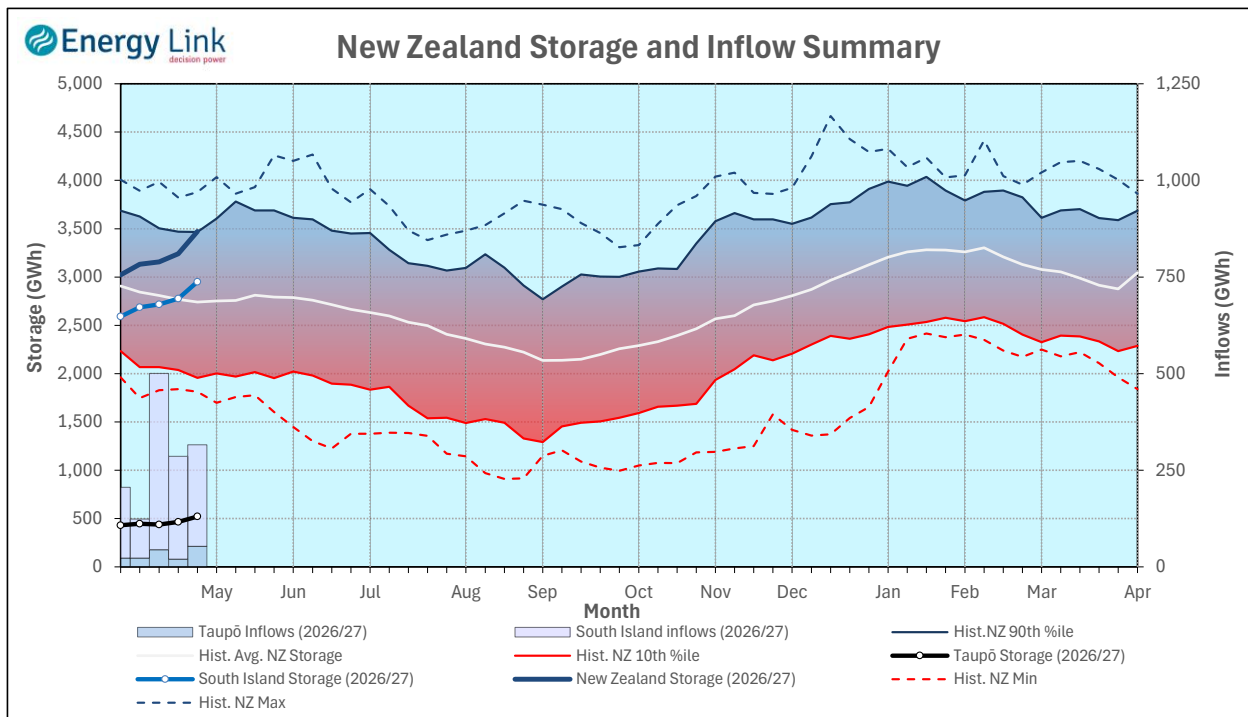
Note: SI Controlled; Takapō, Pūkaki and Hāwea: SI Uncontrolled; Manapōuri, Te Anau, Wānaka, Wakatipu

Transpower Security of Supply	South Island	North Island	New Zealand
Current Storage (GWh)	2,838	521	3,359

Note: These figures are provided to align with Transpower's Security of Supply reporting methodology. Variance from Transpower values is due to differences in generation efficiencies and contingent storage volumes.

New Zealand Summary

Total storage increased 231 GWh over the last week. South Island controlled storage increased 2.4% to 2,513 GWh; South Island uncontrolled storage increased 36% to 438 GWh; with Taupō storage increasing 12.1% to 521 GWh.



Thursday, 23 April 2026					
	Manapōuri	Clutha	Waitaki	Waikato	NZ
Storage (GWh)					
This Week	325	391	2,235	521	3,471
Last Week	228	362	2,186	465	3,240
% Change	42.3%	8.0%	2.3%	12.1%	7.1%
Inflow (GWh)					
This Week	173	91	172	106	542
Last Week	93	63	147	69	372
% Change	85.8%	44.6%	17.1%	54.4%	45.8%

Subscribe at www.energylink.co.nz/publications

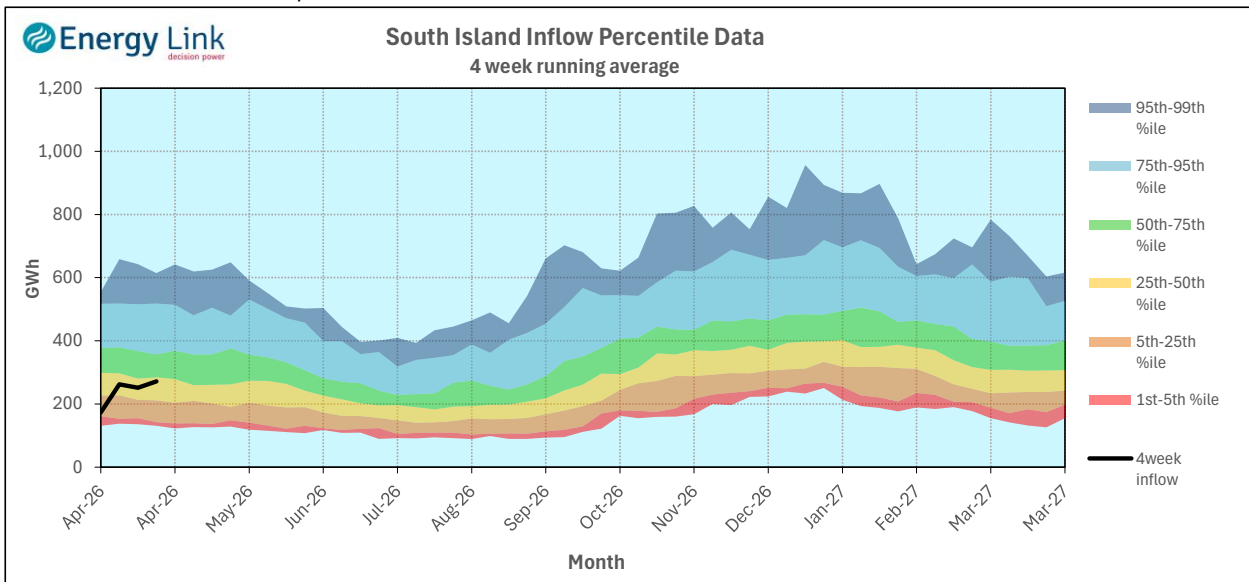
Lake Levels and Outflows

Catchment	Lake	Level (m. asl)	Storage (GWh)	Outflow (cumecs)	Outflow Change
Manapōuri	Manapōuri	177.99	126	63	28
	Te Anau	202.19	199		
Clutha	Wakatipu	309.88	47	164	27
	Wānaka	277.40	65	216	
	Hāwea	345.54	278	17	
Waitaki	Takapō	708.43	631		24
	Pūkaki	530.73	1,605		
Waikato	Taupō	357.13	521		-1

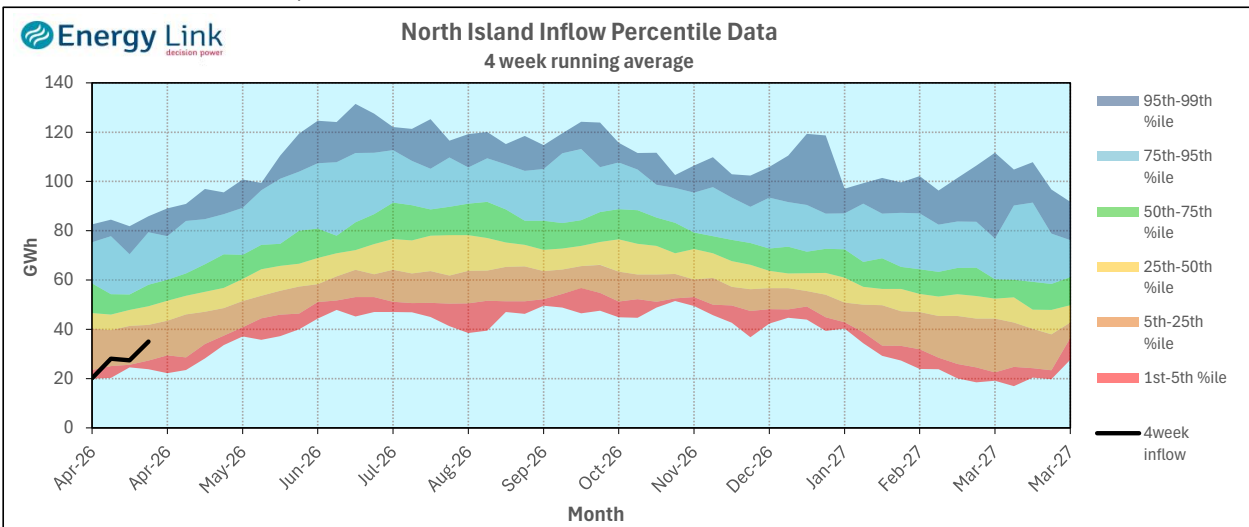
Inflow Summary

The two charts below represent where current inflows are in relation to historic inflow patterns. The percentile values have been calculated using all inflows since 1931.

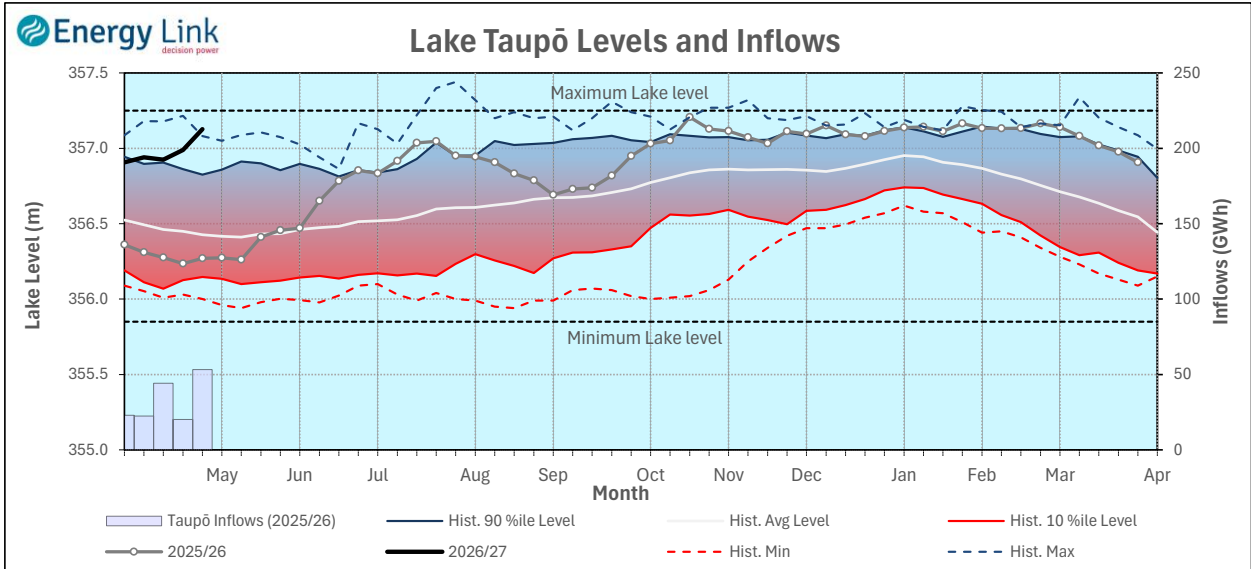
South Island Inflows - The past four weeks of S. I. inflows rank as the 45th driest on record.



North Island Inflows - The past four weeks of N. I. inflows rank as the 13th driest on record.



Waikato System

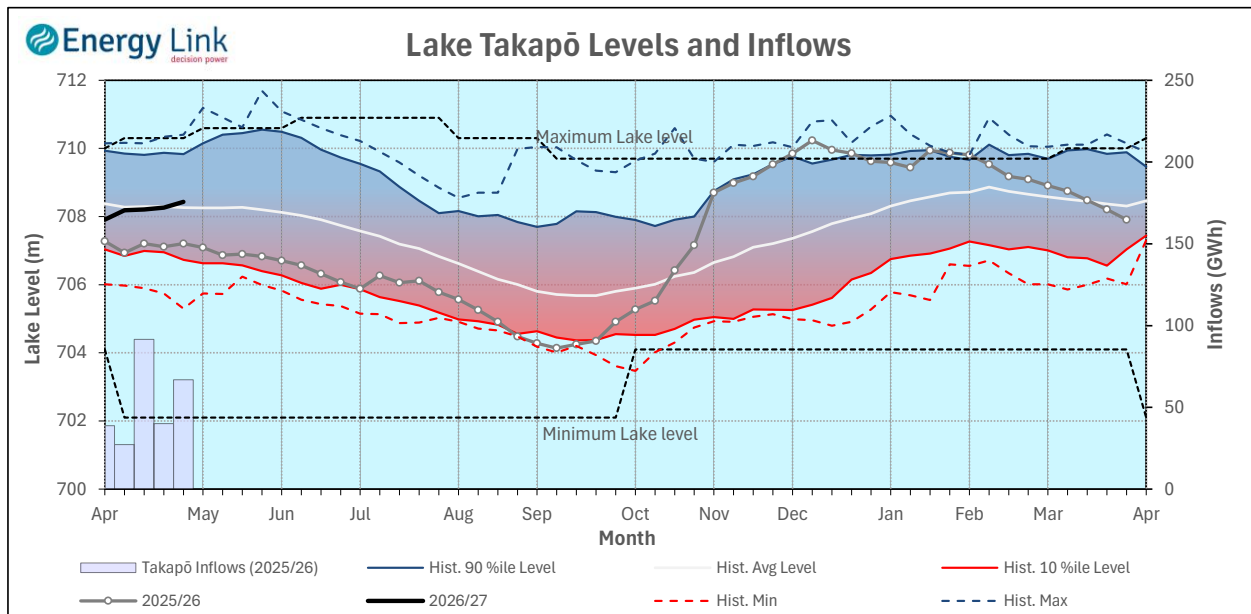


Lake Levels - Lake Taupō storage increased to 91.2% of nominal full at 521 GWh.

Inflows - Inflows increased 54.4% to 106 GWh.

Generation - Average generation increased 3.7% to 429.7 MW.

Takapō



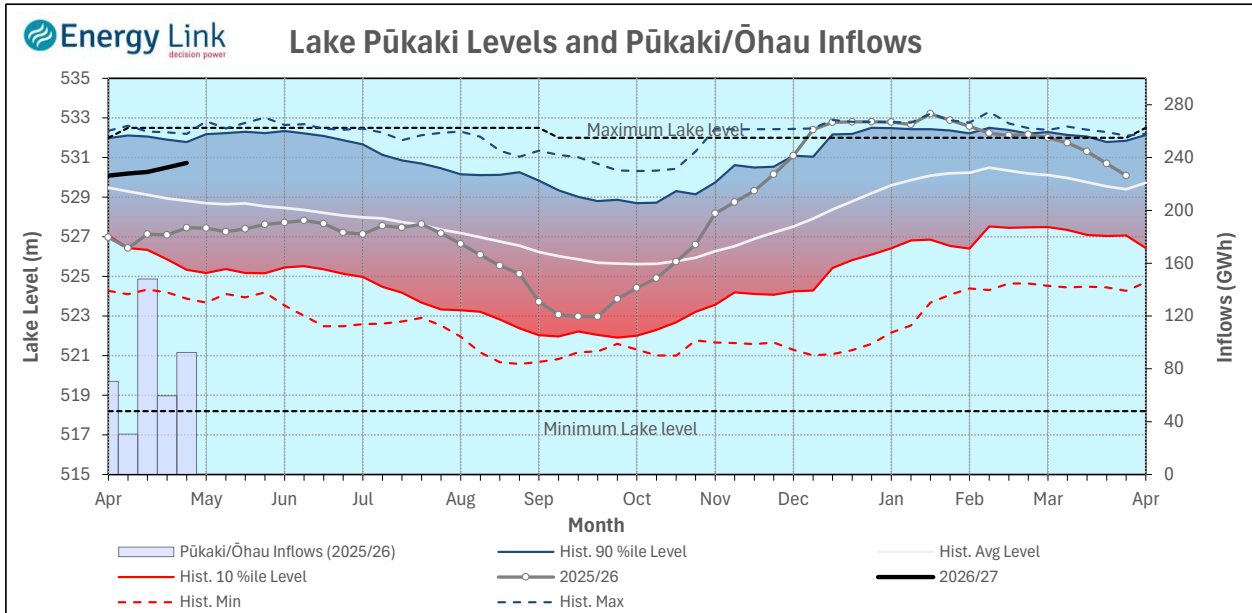
Lake Levels - Lake Takapō ended the week 79% nominally full with storage increasing to 631 GWh.

Inflows - Inflows into Takapō increased 40% to 65 GWh.

Generation - Average Takapō generation increased 15.3% to 100 MW.

Hydro Spill - Lake Takapō did not spill.

Waitaki System



Lake Levels - Lake Pūkaki ended the week 87% nominally full with storage increasing to 1,605 GWh.

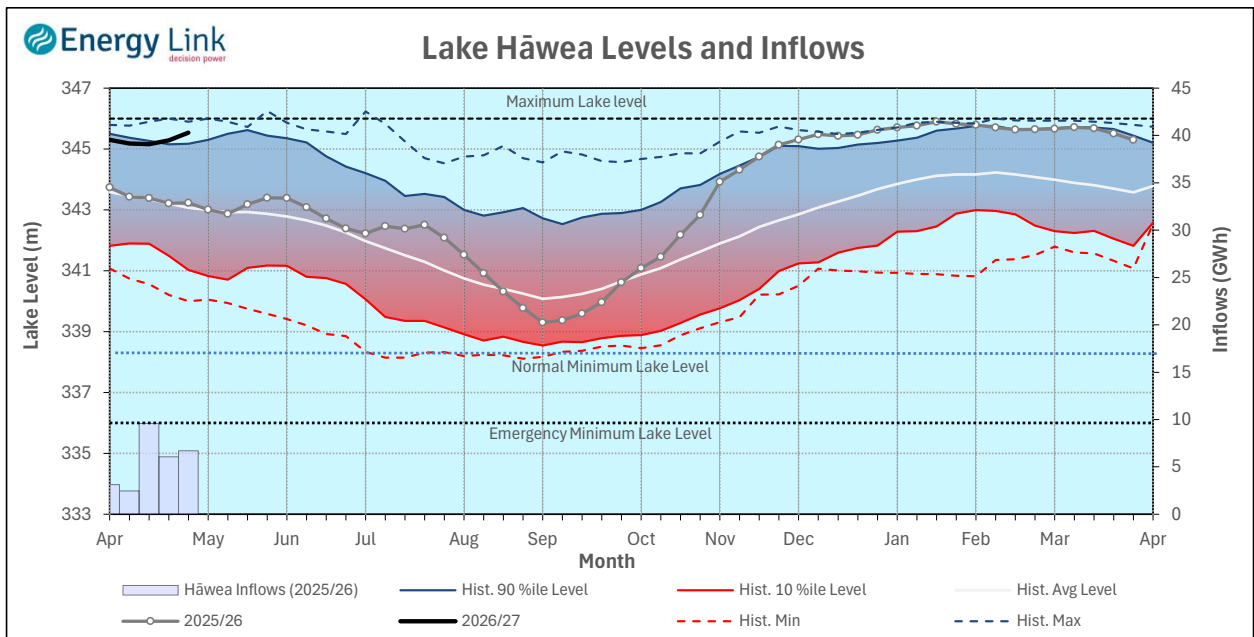
Inflows - Inflows into the Waitaki System increased 6.5% to 107 GWh.

Generation - Average Waitaki generation increased 10.4% to 716 MW.

Hydro Spill - Lake Pūkaki did not spill.

River Flows - Flows from the Ahuriri River increased to 37 cumecs while Waitaki River flows were higher than last week averaging 287.1 cumecs.

Clutha System



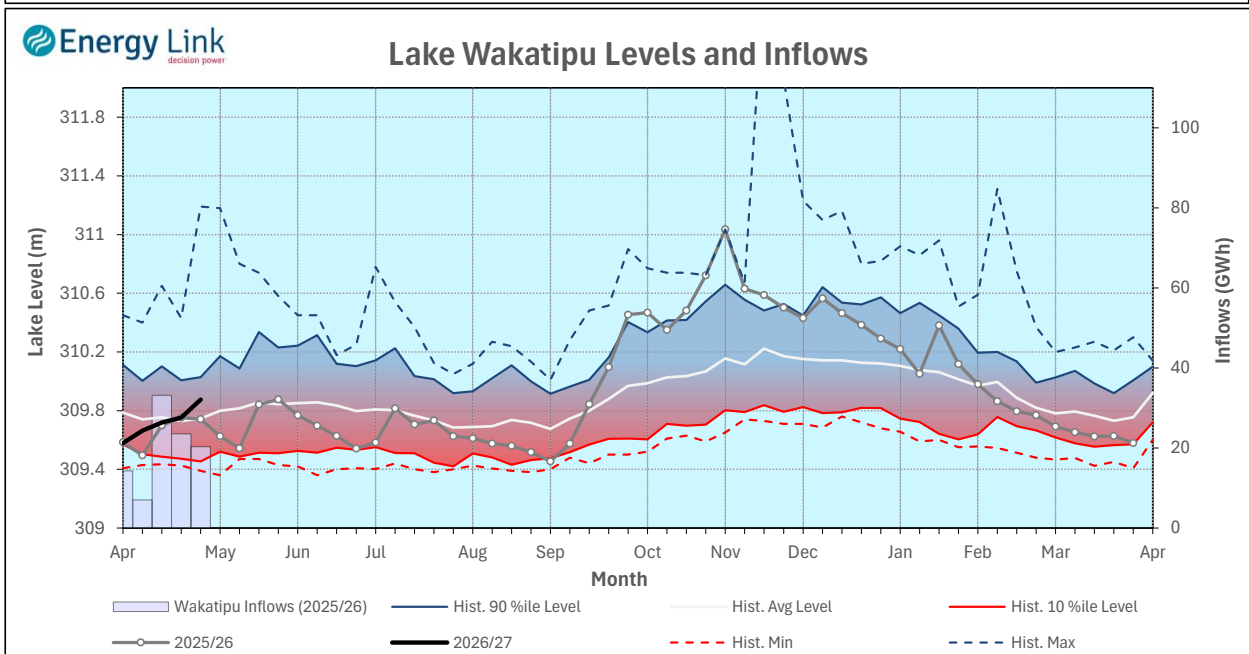
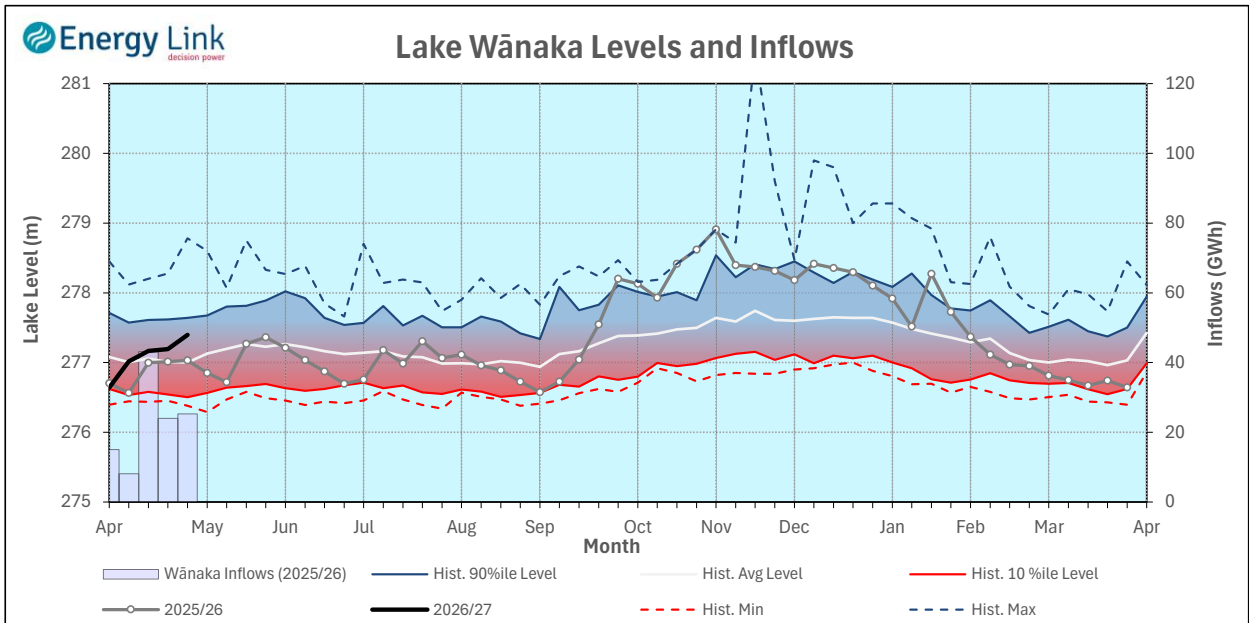
Lake Levels - Total storage for the Clutha System increased by 8% to 391 GWh. Lakes Hāwea, Wānaka and Wakatipu ended the week 94.1%, 57.2% and 44.7% nominally full respectively.

Inflows - Total Inflows into the Clutha System 44.6% higher at 91 GWh.

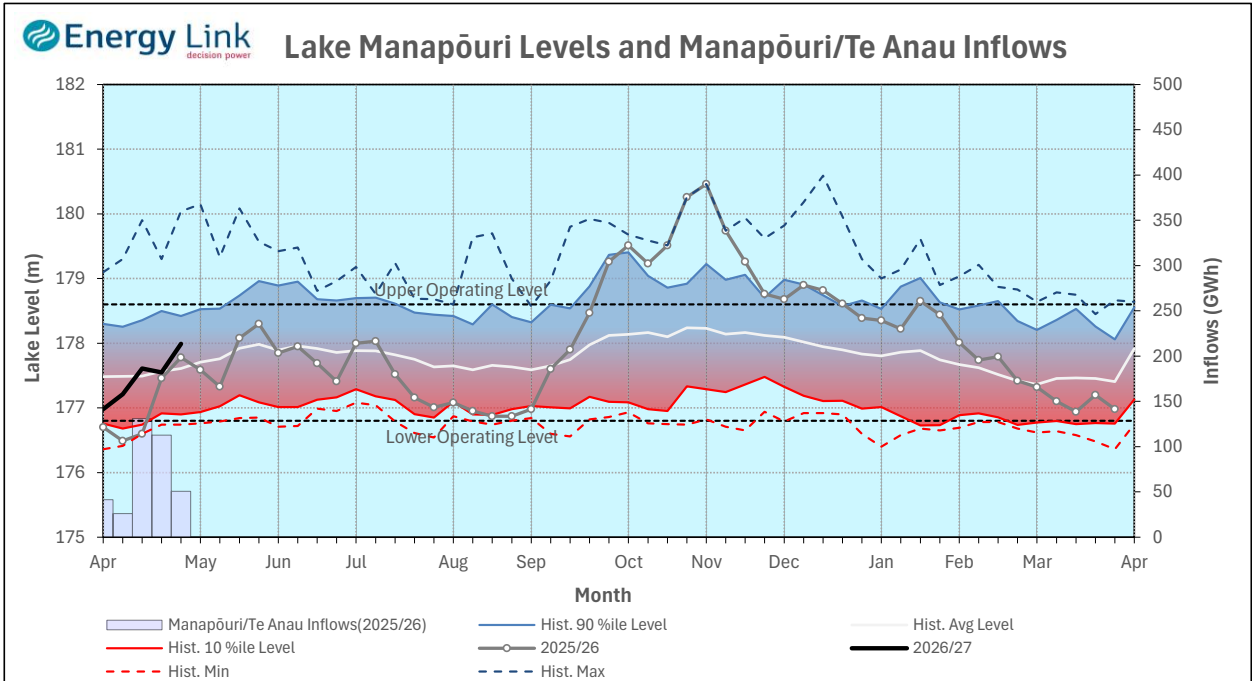
Generation - Average generation was 15.1% higher at 413 MW.

Hydro Spill - There was no estimated spill

River Flows - Total outflows from the lakes and Shotover River increased to 441.4 cumecs. This comprised of 17 cumecs from Lake Hāwea, 216 cumecs from Lake Wānaka, 164 cumecs from Lake Wakatipu and 45 cumecs from the Shotover River.



Manapōuri System



Lake Levels - Total storage for the Manapōuri System increased by 42.3% to 325 GWh with Lake Manapōuri ending the week 77.5% nominally full and Lake Te Anau ending the week 72.3% nominally full.

Inflows - Total inflows into the Manapōuri System increased 85.8% to 173 GWh.

Generation - Average generation was 4.5% lower at 457 MW.

Hydro Spill - Estimated spill at the Māraoroa Weir was 62.8 cumecs.

Operating Range - Lakes Manapōuri and Te Anau are operating in the middle of their respective 'Main operating range'.

