

# HydroWatch

Thursday, 2 April 2026

Issue: 1511

A weekly summary relating to New Zealand hydro storage and inflows.

Compiled by Energy Link Ltd.

Storage Summary	South Island Controlled	South Island Uncontrolled	South Island Total	North Island Taupo	Total Storage
Current Storage (GWh)	2,400	288	2,688	445	3,133
Storage Change (GWh)	38	58	97	14	110

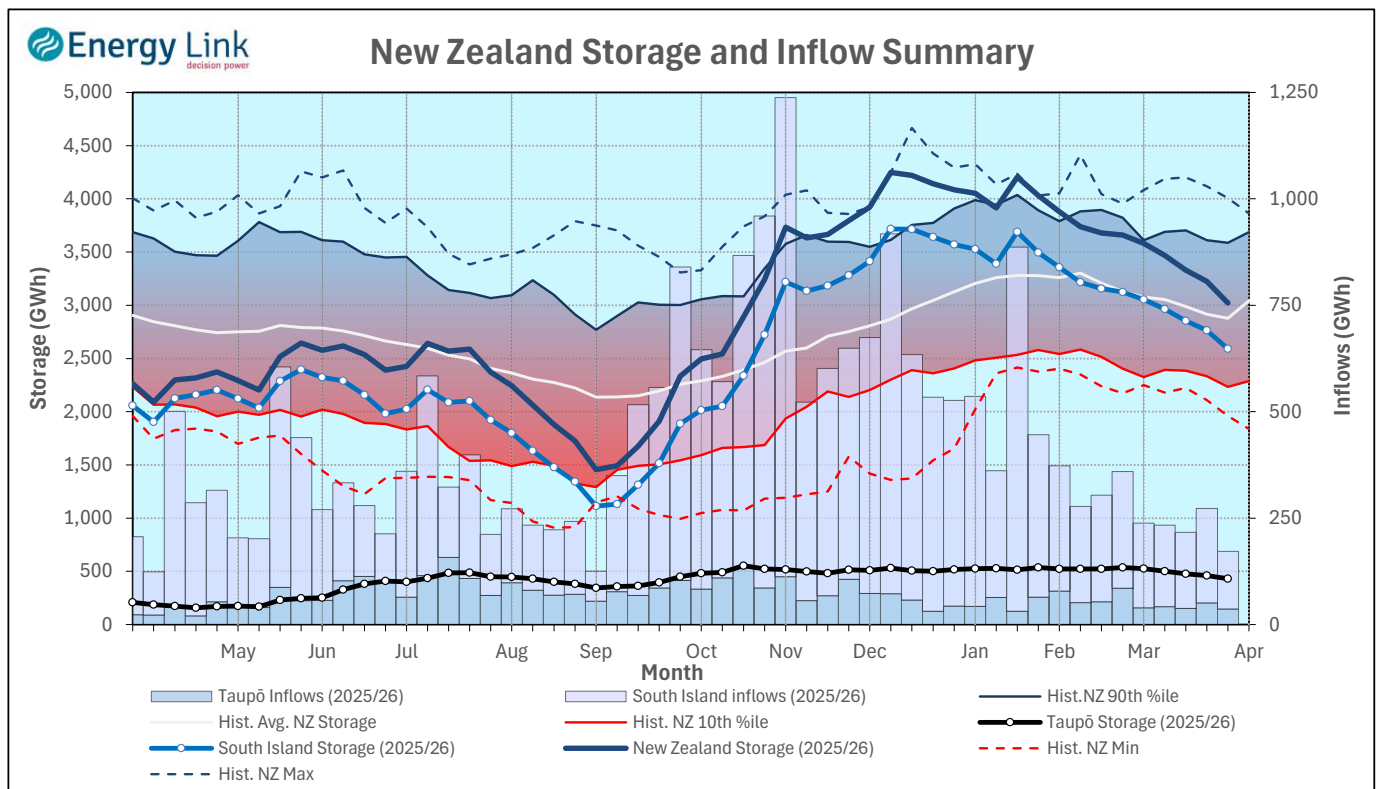
Note: SI Controlled; Takapō, Pūkaki and Hāwea: SI Uncontrolled; Manapōuri, Te Anau, Wānaka, Wakatipu

Transpower Security of Supply	South Island	North Island	New Zealand
Current Storage (GWh)	2,610	445	3,055

Note: These figures are provided to align with Transpower's Security of Supply reporting methodology. Variance from Transpower values is due to differences in generation efficiencies and contingent storage volumes.

## New Zealand Summary

Total storage increased 111 GWh over the last week. South Island controlled storage increased 1.6% to 2,400 GWh; South Island uncontrolled storage increased 25% to 288 GWh; with Taupō storage increasing 3.2% to 445 GWh.



Thursday, 2 April 2026					
Storage (GWh)	Manapōuri	Clutha	Waitaki	Waikato	NZ
<b>This Week</b>	210	342	2,136	445	3,133
Last Week	177	322	2,093	431	3,022
% Change	18.7%	6.4%	2.0%	3.2%	3.7%
Inflow (GWh)	Manapōuri	Clutha	Waitaki	Waikato	NZ
<b>This Week</b>	99	72	211	60	441
Last Week	32	28	76	36	172
% Change	212.1%	154.5%	179.3%	64.4%	156.9%

Subscribe at [www.energylink.co.nz/publications](http://www.energylink.co.nz/publications)

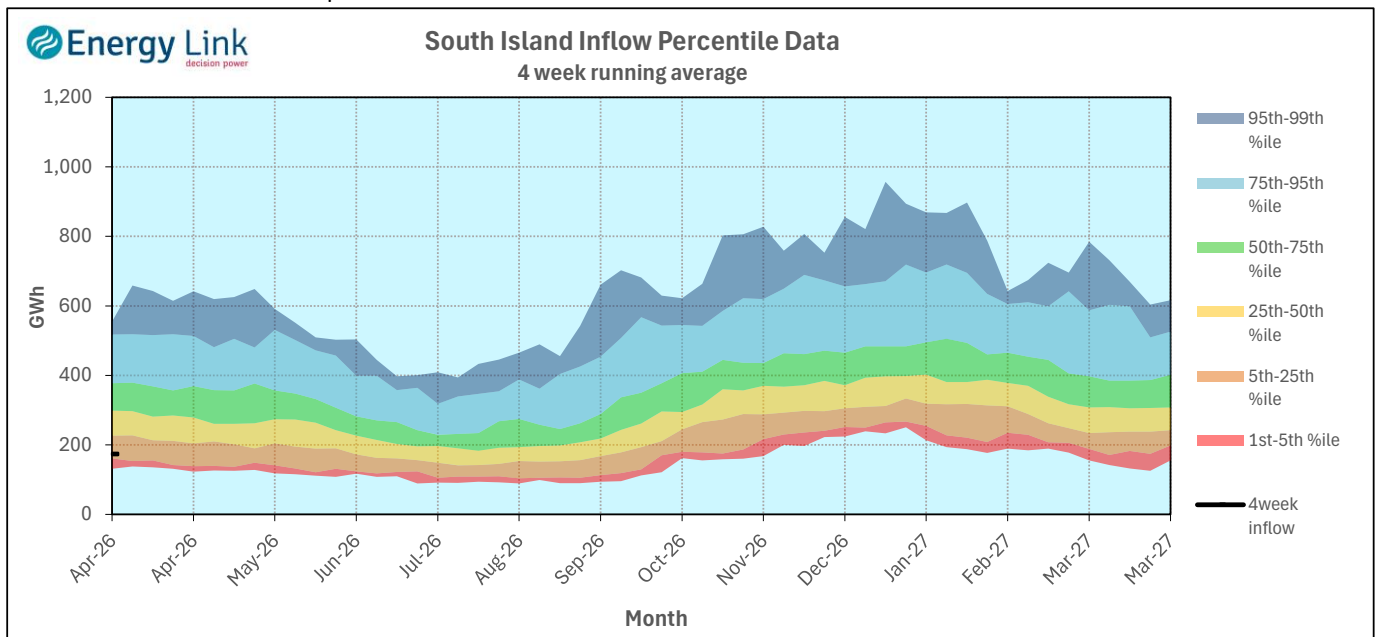
Lake Levels and Outflows

Catchment	Lake	Level (m. asl)	Storage (GWh)	Outflow (cumecs)	Outflow Change
Manapōuri	Manapōuri	177.21	80	23	-9
	Te Anau	201.73	130		
Clutha	Wakatipu	309.66	31	108	8
	Wānaka	277.02	47	139	26
	Hāwea	345.19	265	80	5
Waitaki	Takapō	708.19	604		
	Pūkaki	530.19	1,531		
Waikato	Taupō	356.94	445		

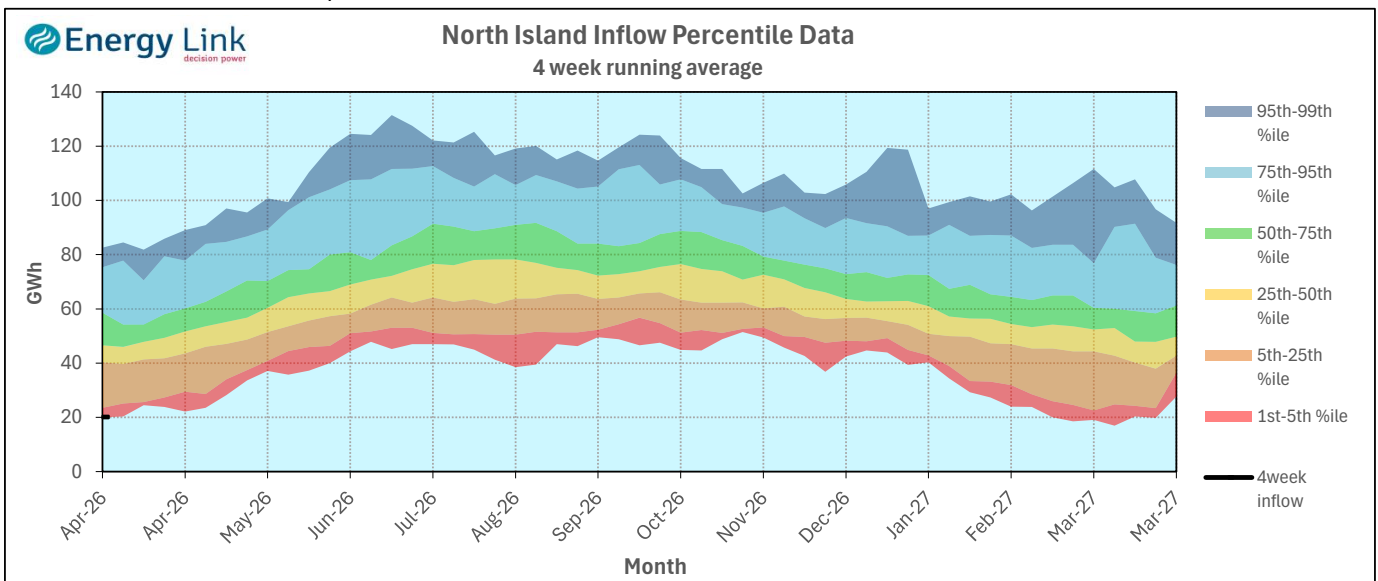
Inflow Summary

The two charts below represent where current inflows are in relation to historic inflow patterns. The percentile values have been calculated using all inflows since 1931.

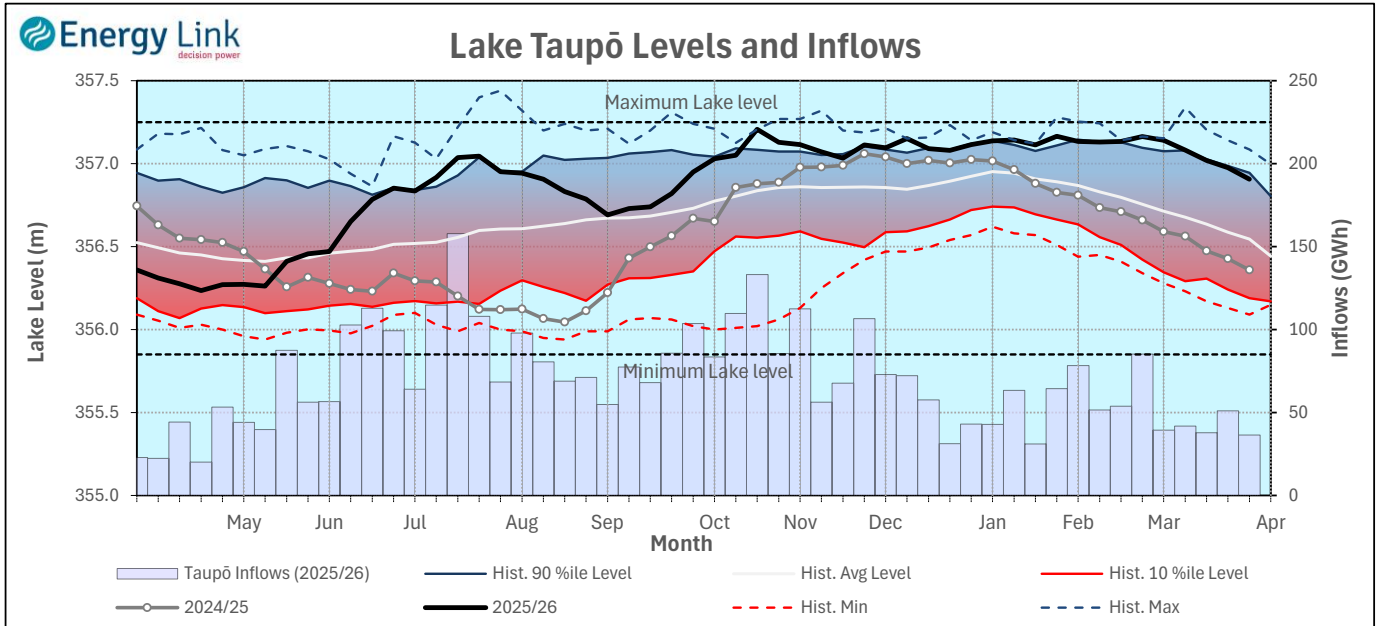
**South Island Inflows** - The past four weeks of S. I. inflows rank as the 8th driest on record.



**North Island Inflows** - The past four weeks of N. I. inflows rank as the 3rd driest on record.



## Waikato System

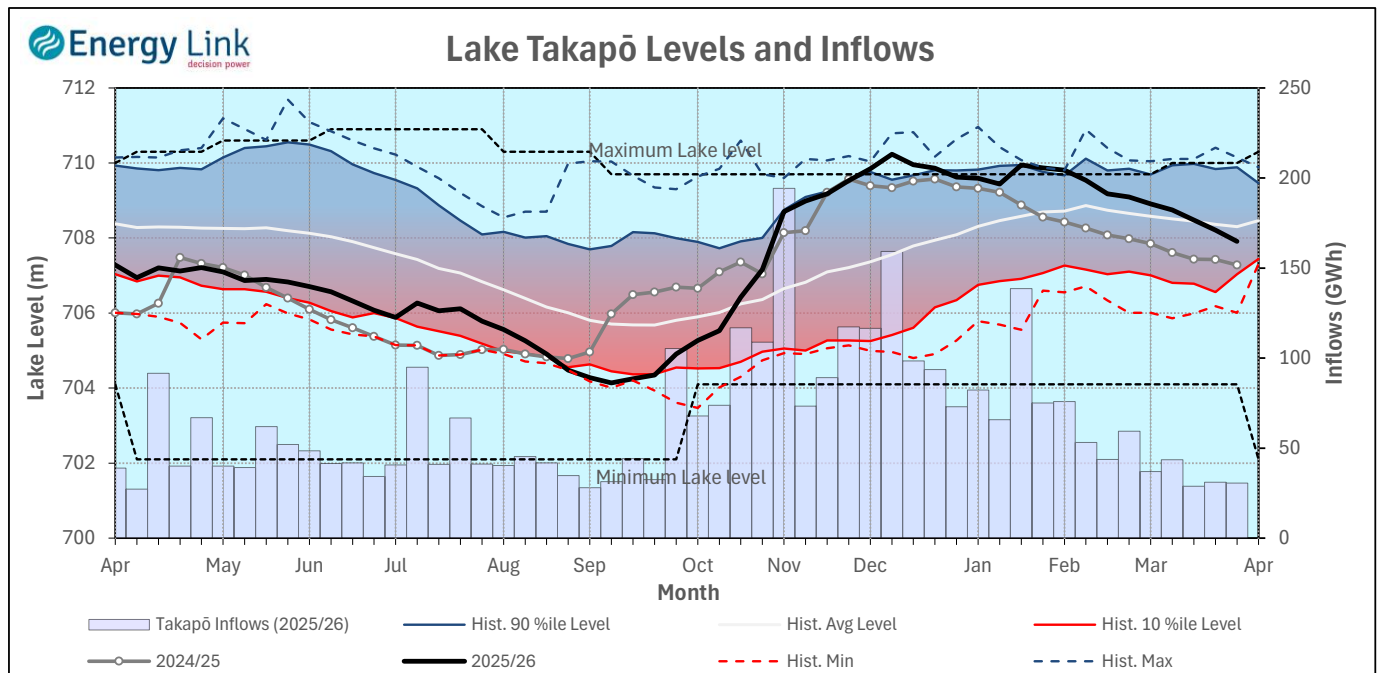


**Lake Levels** - Lake Taupō storage increased to 77.9% of nominal full at 445 GWh.

**Inflows** - Inflows increased 64.4% to 60 GWh.

**Generation** - Average generation decreased 18.6% to 358.6 MW.

## Takapō



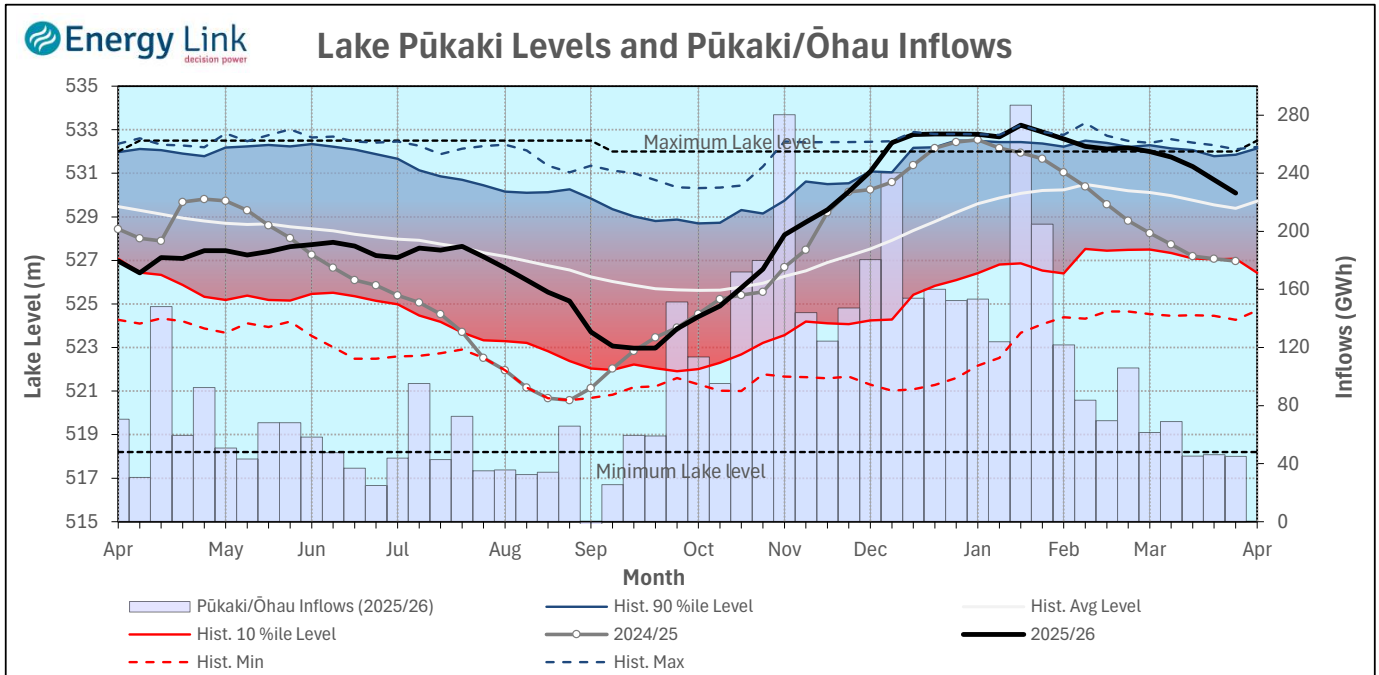
**Lake Levels** - Lake Takapō ended the week 80% nominally full with storage increasing to 604 GWh.

**Inflows** - Inflows into Takapō increased 165.6% to 81 GWh.

**Generation** - Average Takapō generation decreased 17.2% to 101.2 MW.

**Hydro Spill** - Lake Takapō did not spill.

## Waitaki System



**Lake Levels** - Lake Pūkaki ended the week 86% nominally full with storage increasing to 1,531 GWh.

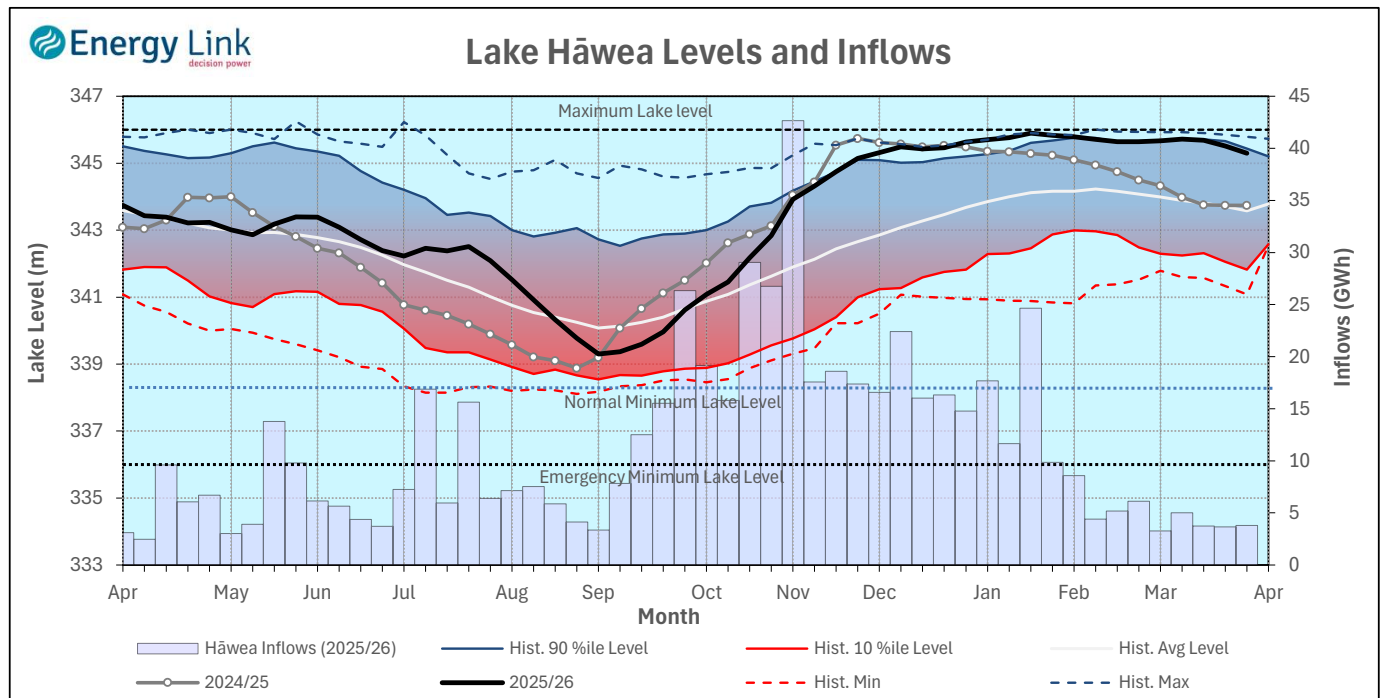
**Inflows** - Inflows into the Waitaki System increased 188.6% to 130 GWh.

**Generation** - Average Waitaki generation decreased 9.6% to 973 MW.

**Hydro Spill** - Lake Pūkaki did not spill.

**River Flows** - Flows from the Ahuriri River increased to 12.9 cumecs while Waitaki River flows were lower than last week averaging 390.8 cumecs.

## Clutha System



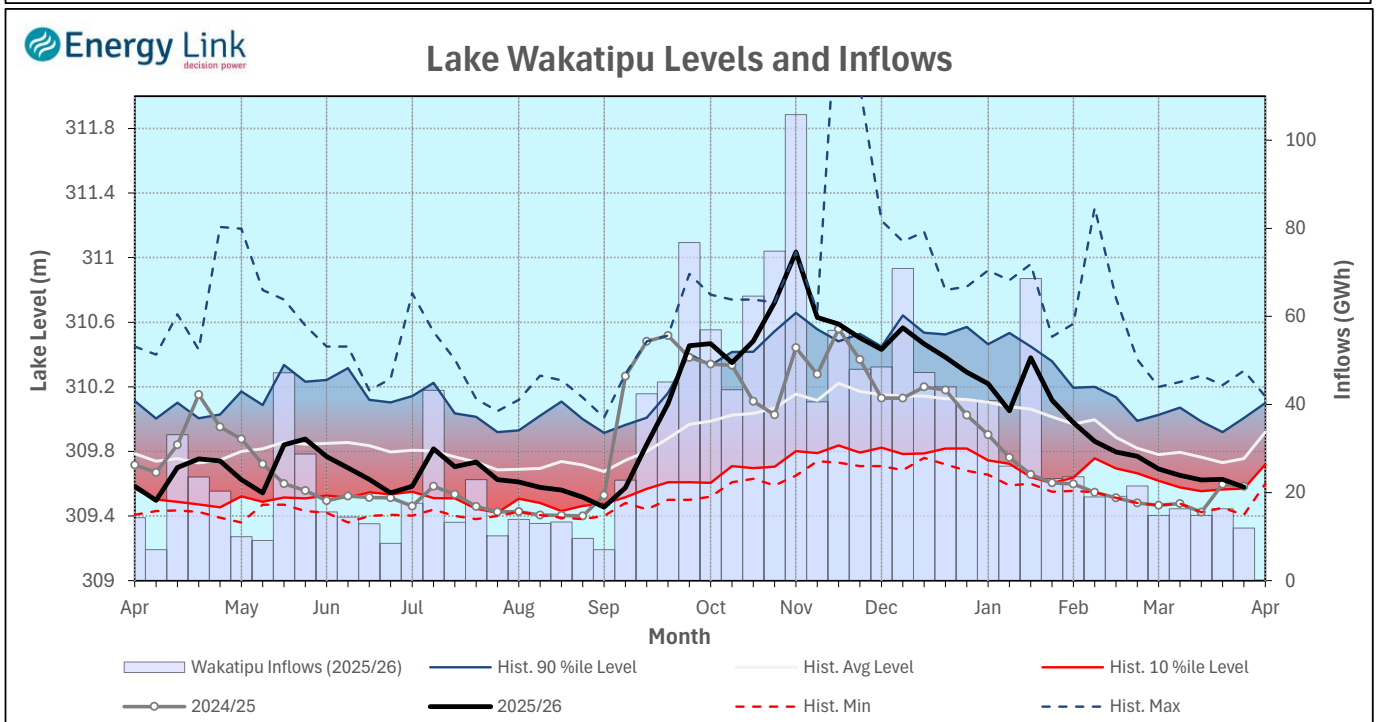
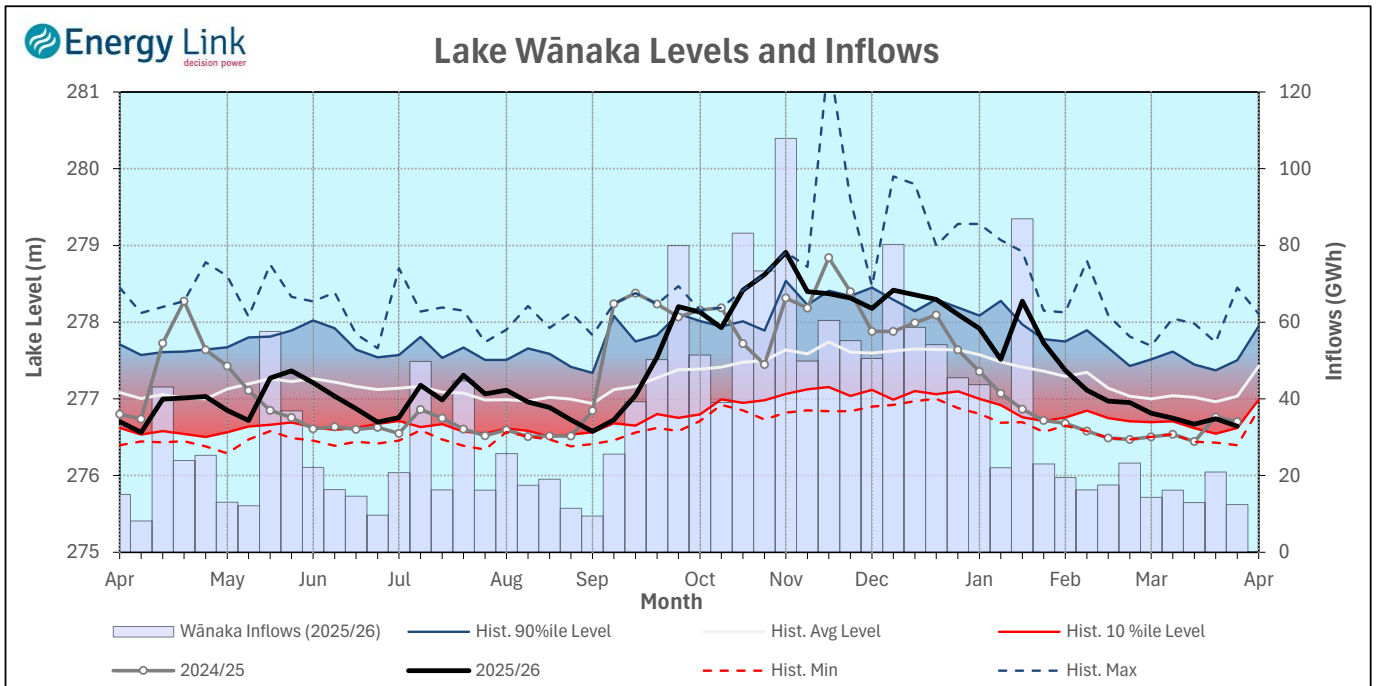
**Lake Levels** - Total storage for the Clutha System increased by 6.4% to 342 GWh. Lakes Hāwea, Wānaka and Wakatipu ended the week 89.5%, 40.7% and 29.5% nominally full respectively.

**Inflows** - Total Inflows into the Clutha System 154.5% higher at 72 GWh.

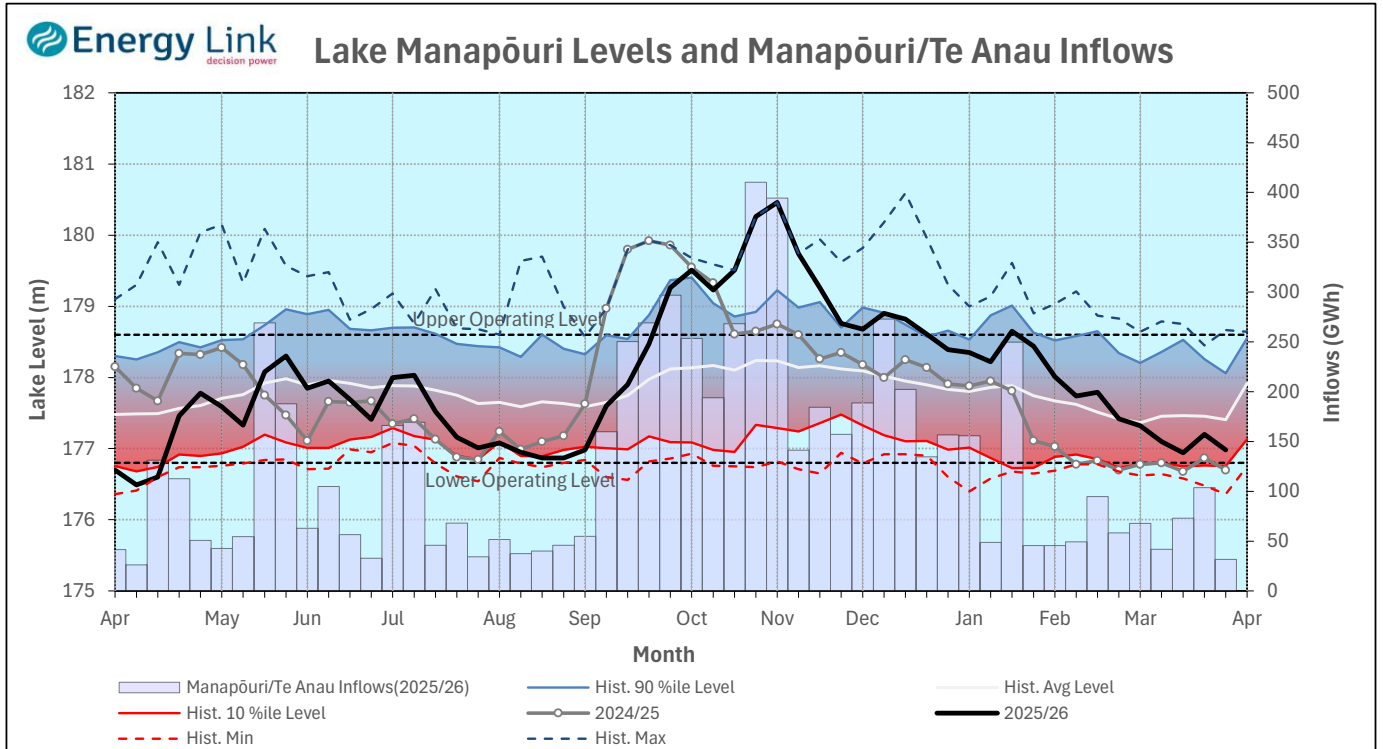
**Generation** - Average generation was 10.1% higher at 323 MW.

**Hydro Spill** - There was no estimated spill

**River Flows** - Total outflows from the lakes and Shotover River increased to 353.9 cumecs. This comprised of 80 cumecs from Lake Hāwea, 139 cumecs from Lake Wānaka, 108 cumecs from Lake Wakatipu and 26 cumecs from the Shotover River.



# Manapōuri System



**Lake Levels** - Total storage for the Manapōuri System increased by 18.7% to 210 GWh with Lake Manapōuri ending the week 49% nominally full and Lake Te Anau ending the week 47.3% nominally full.

**Inflows** - Total inflows into the Manapōuri System increased 212.1% to 99 GWh.

**Generation** - Average generation was 11.8% lower at 392 MW.

**Hydro Spill** - Estimated spill at the Māraroa Weir was 22.6 cumecs.

**Operating Range** - Lakes Manapōuri and Te Anau are operating in the lower end of their respective 'Main operating range'.

