

HydroWatch

Thursday, 5 February 2026

Issue: 1503

A weekly summary relating to New Zealand hydro storage and inflows.

Compiled by Energy Link Ltd.

Storage Summary	South Island Controlled	South Island Uncontrolled	South Island Total	North Island Taupo	Total Storage
Current Storage (GWh)	2,846	370	3,217	522	3,739
Storage Change (GWh)	-80	-60	-140	-1	-142

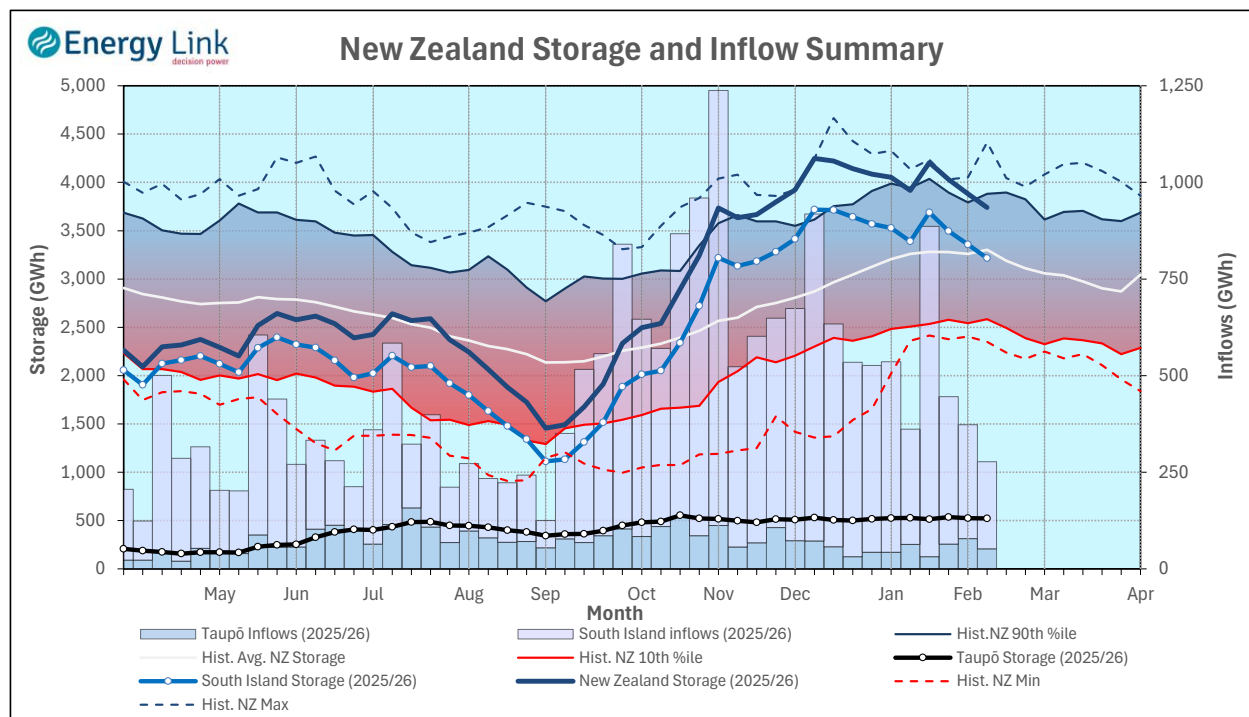
Note: SI Controlled; Takapō, Pūkaki and Hāwea; SI Uncontrolled; Manapōuri, Te Anau, Wānaka, Wakatipu

Transpower Security of Supply	South Island	North Island	New Zealand
Current Storage (GWh)	3,119	522	3,642

Note: These figures are provided to align with Transpower's Security of Supply reporting methodology. Variance from Transpower values is due to differences in generation efficiencies and contingent storage volumes.

New Zealand Summary

Total storage decreased 142 GWh over the last week. South Island controlled storage decreased 2.7% to 2,846 GWh; South Island uncontrolled storage decreased 14% to 370 GWh; with Taupō storage decreasing 0.2% to 522 GWh.



Thursday, 5 February 2026					
Storage (GWh)	Manapōuri	Clutha	Waitaki	Waikato	NZ
This Week	273	382	2,562	522	3,739
Last Week	311	407	2,639	524	3,881
% Change	-12.4%	-6.1%	-2.9%	-0.2%	-3.6%
Inflow (GWh)	Manapōuri	Clutha	Waitaki	Waikato	NZ
This Week	49	40	137	52	277
Last Week	45	52	198	78	373
% Change	8.2%	-23.3%	-30.7%	-34.2%	-25.7%

Subscribe at www.energylink.co.nz/publications

Lake Levels and Outflows

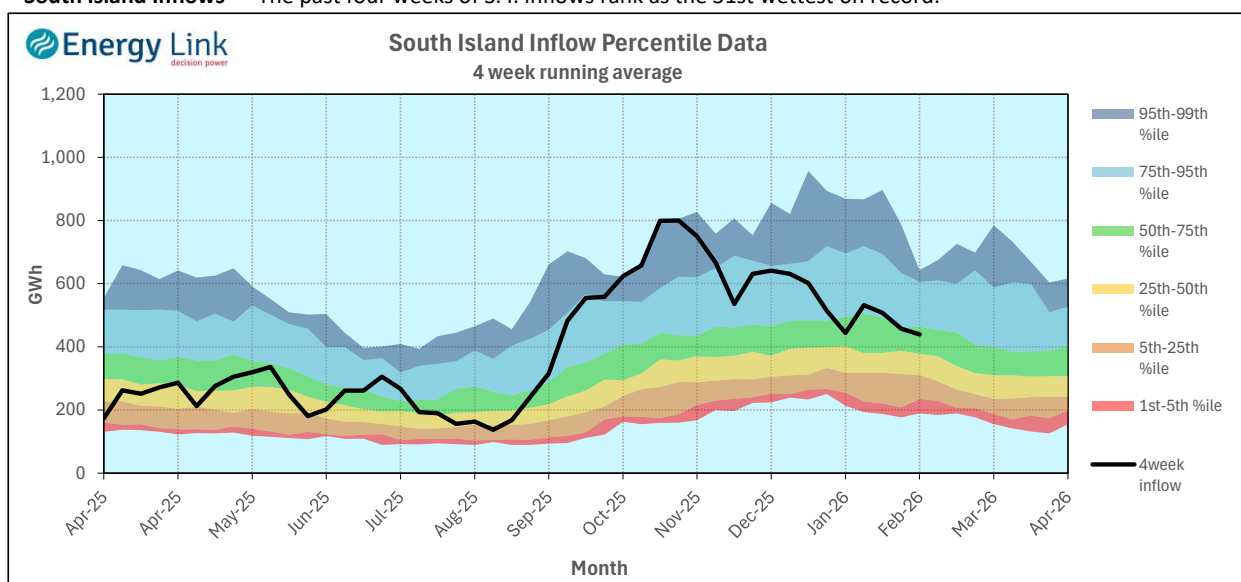
Catchment	Lake	Level (m. asl)	Storage (GWh)	Outflow (cumecs)
Manapōuri	Manapōuri	177.74	111	17
	Te Anau	201.94	162	
Clutha	Wakatipu	309.86	46	178
	Wānaka	277.11	51	187
	Hāwea	345.71	284	48
Waitaki	Takapō	709.54	750	
	Pūkaki	532.24	1,812	
Waikato	Taupō	357.13	522	

Outflow Change
-3
-40
-53
-16

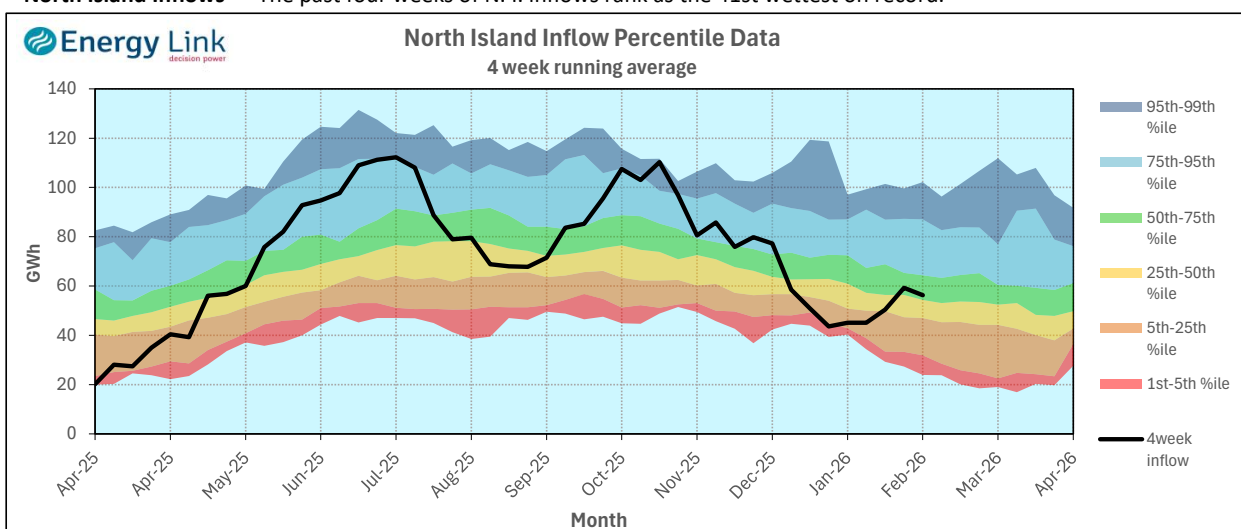
Inflow Summary

The two charts below represent where current inflows are in relation to historic inflow patterns. The percentile values have been calculated using all inflows since 1931.

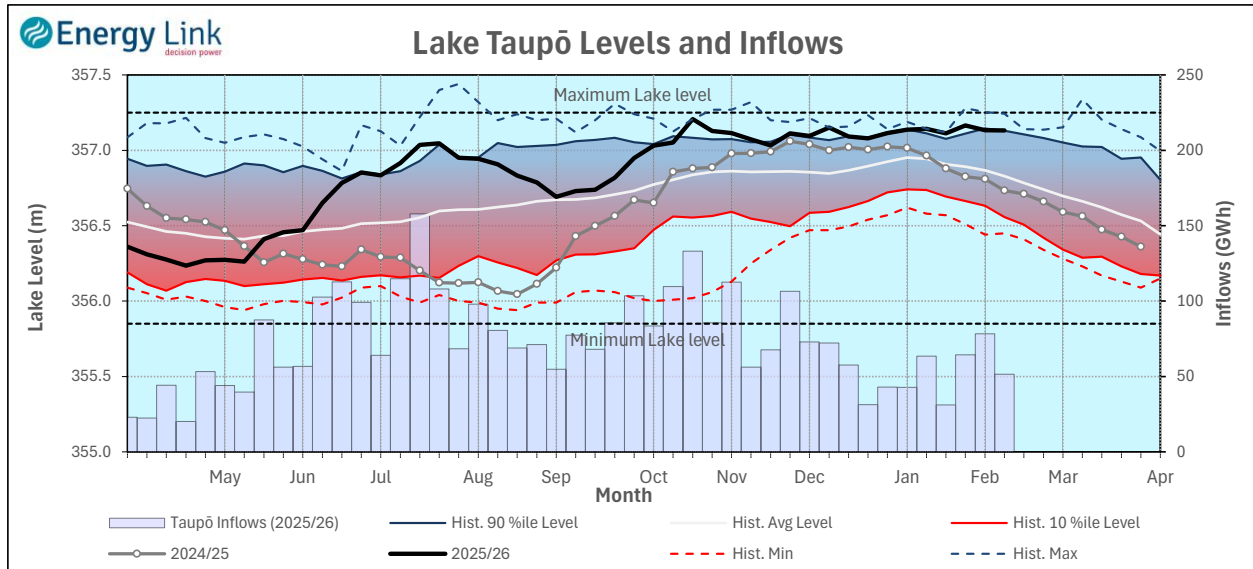
South Island Inflows - The past four weeks of S. I. inflows rank as the 31st wettest on record.



North Island Inflows - The past four weeks of N. I. inflows rank as the 41st wettest on record.



Waikato System

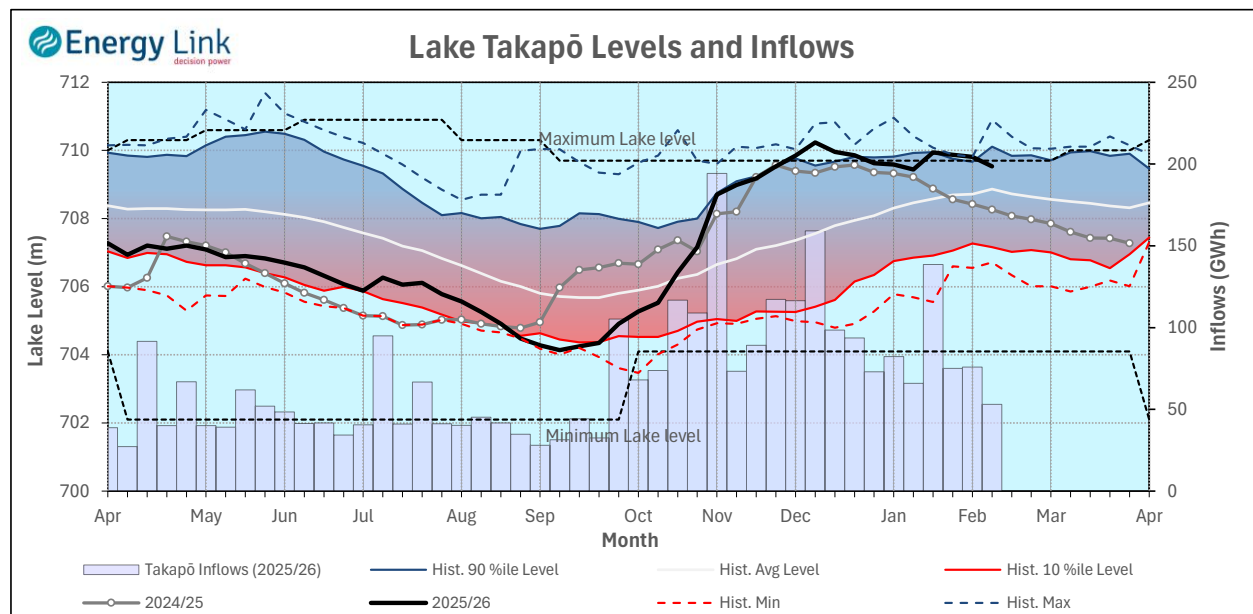


Lake Levels - Lake Taupō storage fell to 91.5% of nominal full at 522 GWh.

Inflows - Inflows decreased 34.2% to 52 GWh.

Generation - Average generation increased 21.7% to 328.4 MW.

Takapō



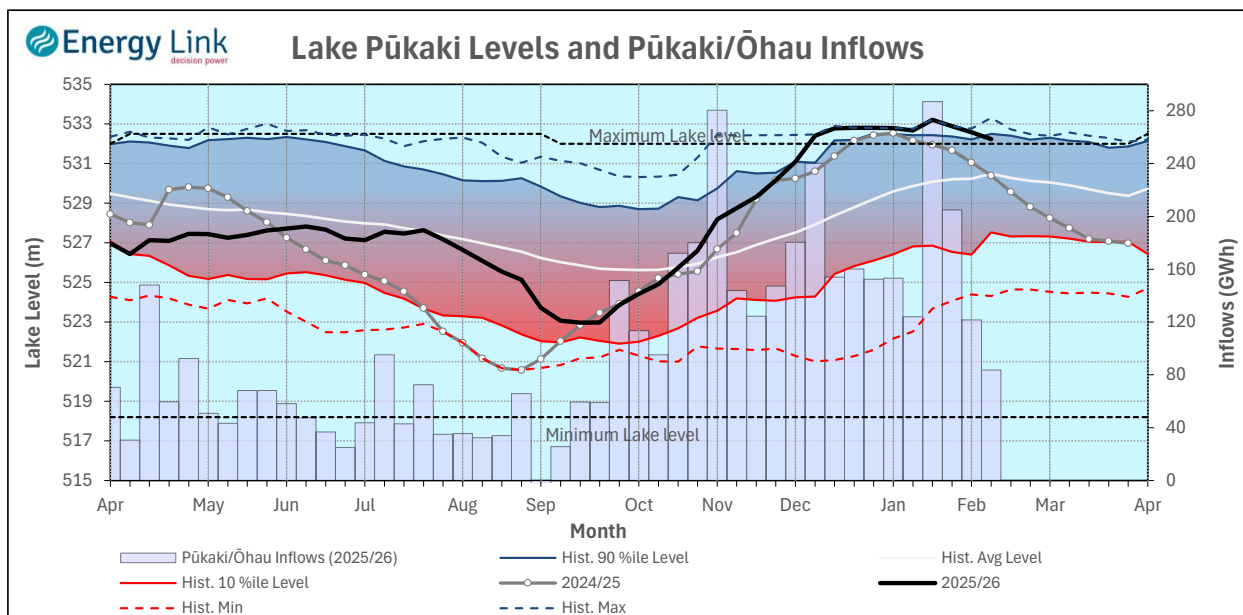
Lake Levels - Lake Takapō ended the week 104% nominally full with storage falling to 750 GWh.

Inflows - Inflows into Takapō decreased 29.9% to 53 GWh.

Generation - Average Takapō generation increased 1.3% to 177.8 MW.

Hydro Spill - Lake Takapō did not spill.

Waitaki System



Lake Levels - Lake Pūkaki ended the week 102% nominally full with storage falling to 1,812 GWh.

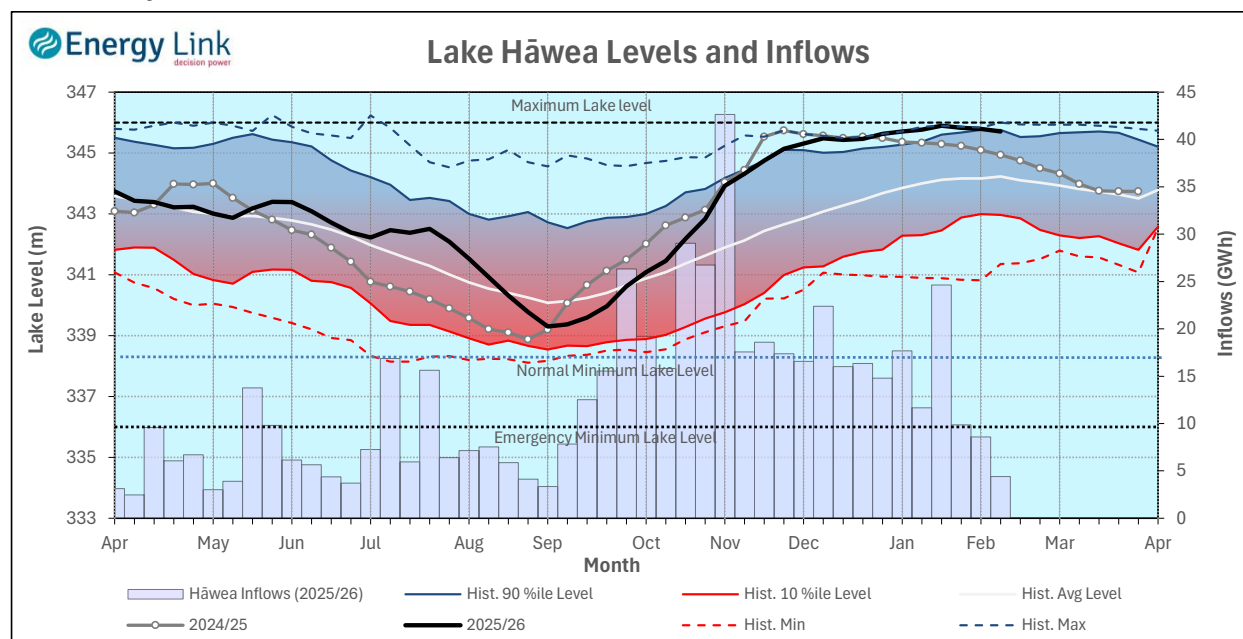
Inflows - Inflows into the Waitaki System decreased 31.2% to 84 GWh.

Generation - Average Waitaki generation increased 8.5% to 1,065 MW.

Hydro Spill - Lake Pūkaki spill was 152 cumecs.

River Flows - Flows from the Ahuriri River fell to 24.6 cumecs while Waitaki River flows were lower than last week averaging 568.5 cumecs.

Clutha System



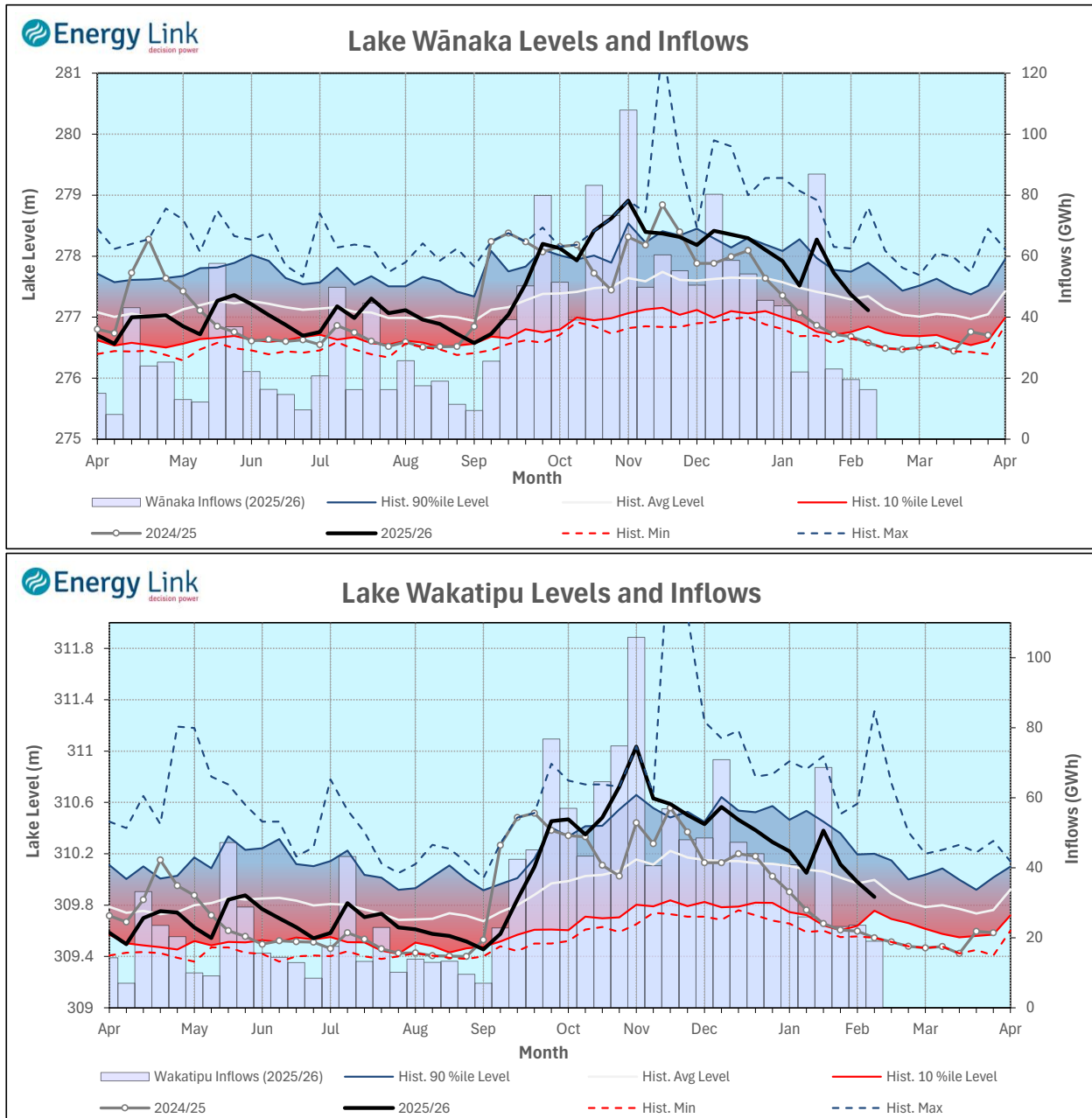
Lake Levels - Total storage for the Clutha System decreased 6.1% to 382 GWh. Lakes Hāwea, Wānaka and Wakatipu ended the week 96.2%, 44.8% and 43.8% nominally full respectively.

Inflows - Total Inflows into the Clutha System 23.3% lower at 40 GWh.

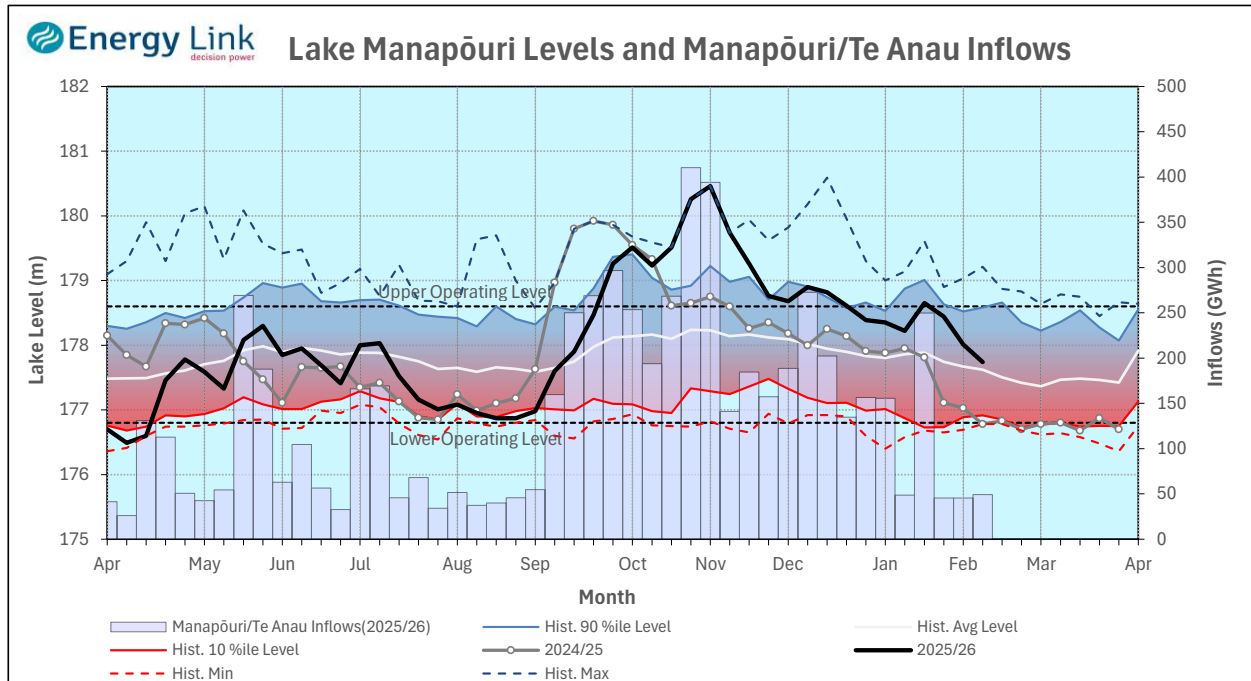
Generation - Average generation was 86.4% higher at 242 MW.

Hydro Spill - Estimate Spill is 169.5 cumecs.

River Flows - Total outflows from the lakes and Shotover River fell to 461.9 cumecs. This comprised of 48 cumecs from Lake Hāwea, 187 cumecs from Lake Wānaka, 178 cumecs from Lake Wakatipu and 49 cumecs from the Shotover River.



Manapōuri System



Lake Levels - Total storage for the Manapōuri System decreased 12.4% to 273 GWh with Lake Manapōuri ending the week 68.3% nominally full and Lake Te Anau ending the week 58.7% nominally full.

Inflows - Total inflows into the Manapōuri System increased 8.2% to 49 GWh.

Generation - Average generation was 14.9% lower at 522 MW.

Hydro Spill - Estimated spill at the Mārarōa Weir was 16.7 cumecs.

Operating Range - Lakes Manapōuri and Te Anau are operating in the middle of their respective 'Main operating range'.

