

HydroWatch

Thursday, 29 January 2026

Issue: 1502

A weekly summary relating to New Zealand hydro storage and inflows.

Compiled by Energy Link Ltd.

Storage Summary	South Island Controlled	South Island Uncontrolled	South Island Total	North Island Taupo	Total Storage
Current Storage (GWh)	2,927	430	3,357	524	3,881
Storage Change (GWh)	-51	-87	-138	-13	-151

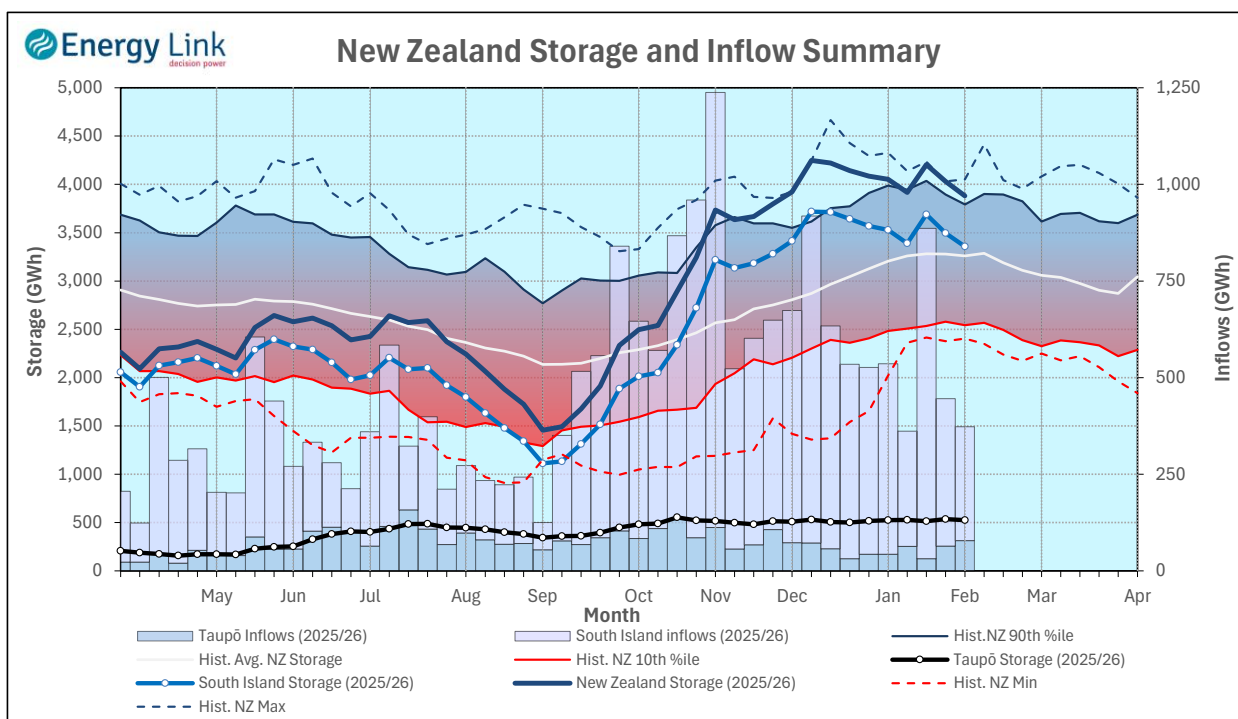
Note: SI Controlled; Takapō, Pūkaki and Hāwea: SI Uncontrolled; Manapōuri, Te Anau, Wānaka, Wakatipu

Transpower Security of Supply	South Island	North Island	New Zealand
Current Storage (GWh)	3,238	524	3,762

Note: These figures are provided to align with Transpower's Security of Supply reporting methodology. Variance from Transpower values is due to differences in generation efficiencies and contingent storage volumes.

New Zealand Summary

Total storage decreased 151 GWh over the last week. South Island controlled storage decreased 1.7% to 2,927 GWh; South Island uncontrolled storage decreased 17% to 430 GWh; with Taupō storage decreasing 2.4% to 524 GWh.



Thursday, 29 January 2026

Storage (GWh)	Manapōuri	Clutha	Waitaki	Waikato	NZ
This Week	311	407	2,639	524	3,881
Last Week	370	436	2,689	536	4,031
% Change	-15.9%	-6.8%	-1.8%	-2.4%	-3.7%
Inflow (GWh)	Manapōuri	Clutha	Waitaki	Waikato	NZ
This Week	45	52	198	78	373
Last Week	45	56	280	64	446
% Change	0.0%	-7.8%	-29.4%	21.8%	-16.3%

Subscribe at www.energylink.co.nz/publications

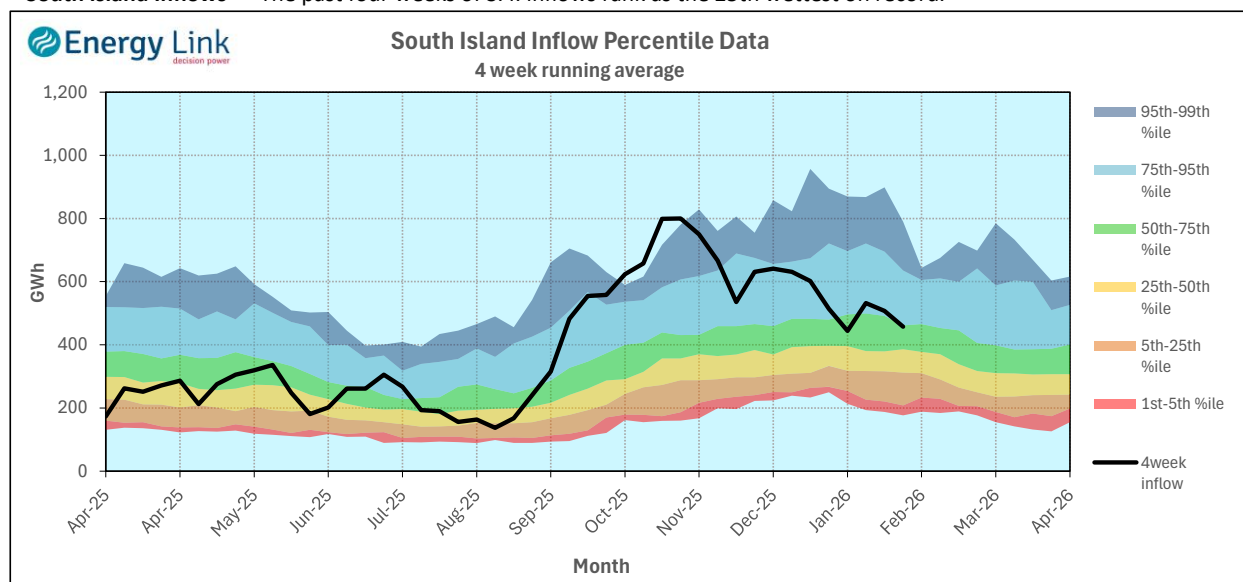
Lake Levels and Outflows

Catchment	Lake	Level (m. asl)	Storage (GWh)	Outflow (cumecs)	Outflow Change
Manapōuri	Manapōuri	178.01	127	20	-127
	Te Anau	202.09	184		
Clutha	Wakatipu	309.98	55	219	-57
	Wānaka	277.37	64	240	-82
	Hāwea	345.79	287	65	-15
Waitaki	Takapō	709.81	780		
	Pūkaki	532.58	1,859		
Waikato	Taupō	357.13	524		

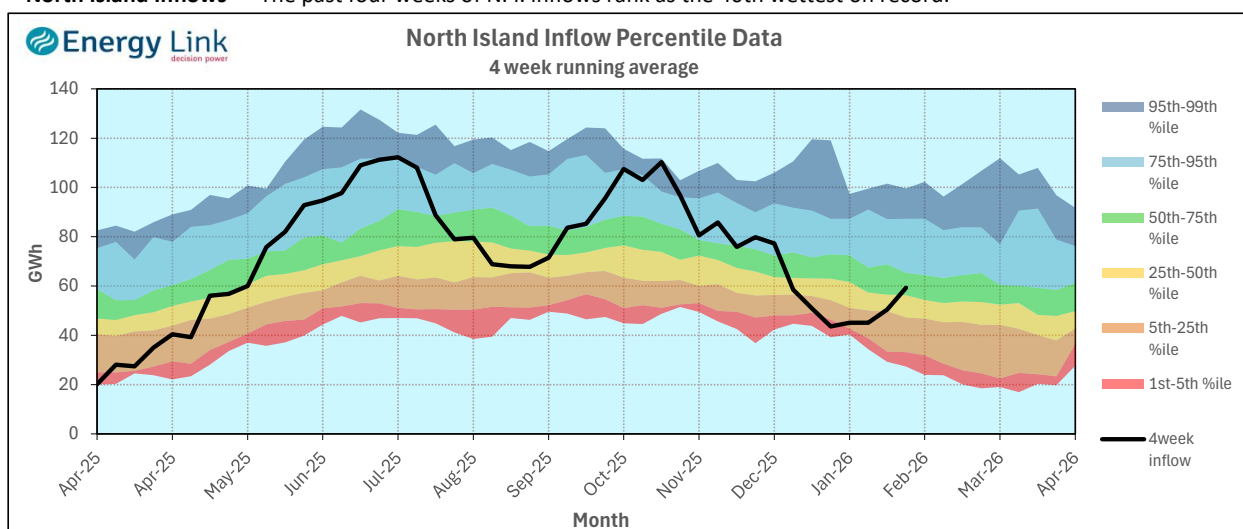
Inflow Summary

The two charts below represent where current inflows are in relation to historic inflow patterns. The percentile values have been calculated using all inflows since 1931.

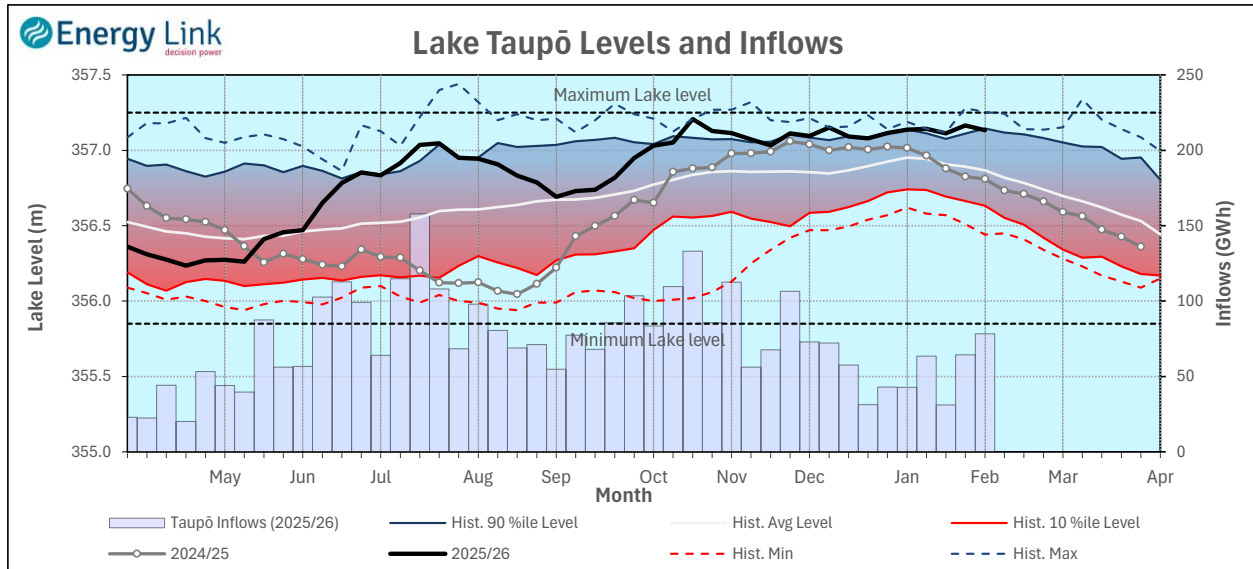
South Island Inflows - The past four weeks of S. I. inflows rank as the 25th wettest on record.



North Island Inflows - The past four weeks of N. I. inflows rank as the 40th wettest on record.



Waikato System

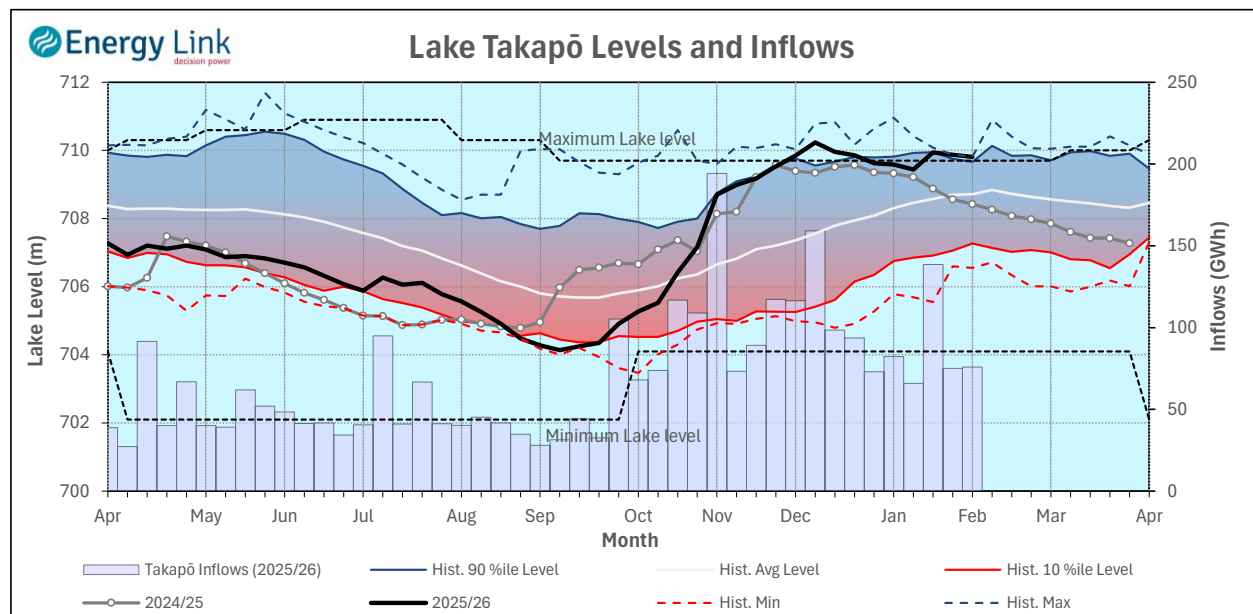


Lake Levels - Lake Taupō storage fell to 91.7% of nominal full at 524 GWh.

Inflows - Inflows increased 21.8% to 78 GWh.

Generation - Average generation decreased 8.4% to 269.7 MW.

Takapō



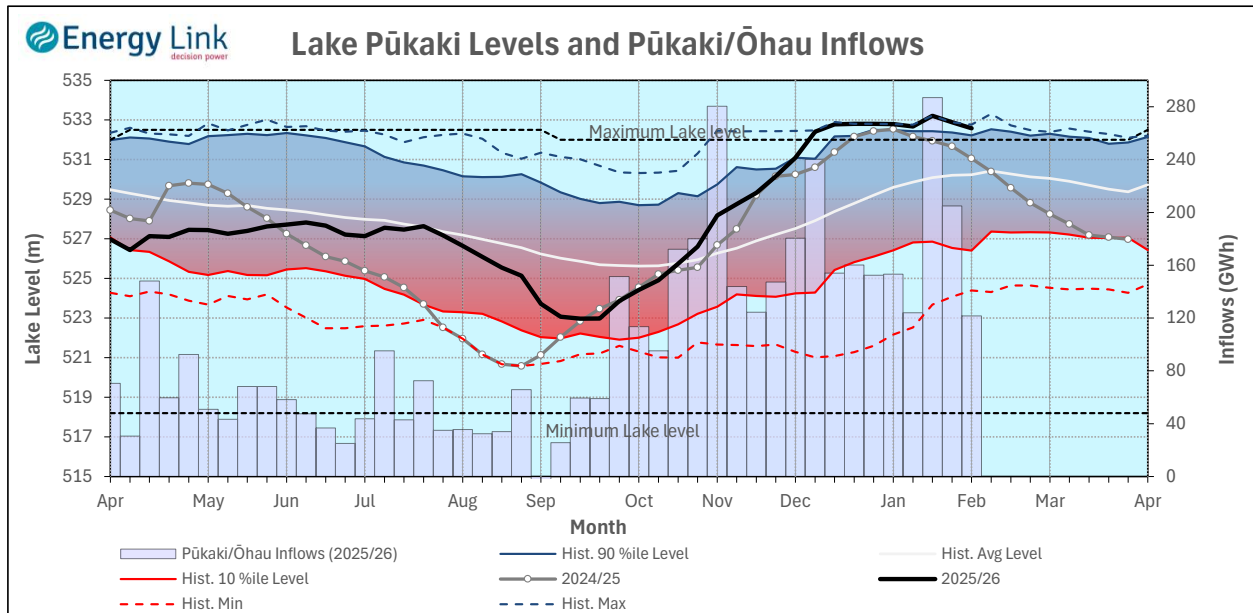
Lake Levels - Lake Takapō ended the week 108% nominally full with storage falling to 780 GWh.

Inflows - Inflows into Takapō increased 1% to 76 GWh.

Generation - Average Takapō generation decreased 1.7% to 175.5 MW.

Hydro Spill - Lake Takapō did not spill.

Waitaki System



Lake Levels - Lake Pūkaki ended the week 104% nominally full with storage falling to 1,859 GWh.

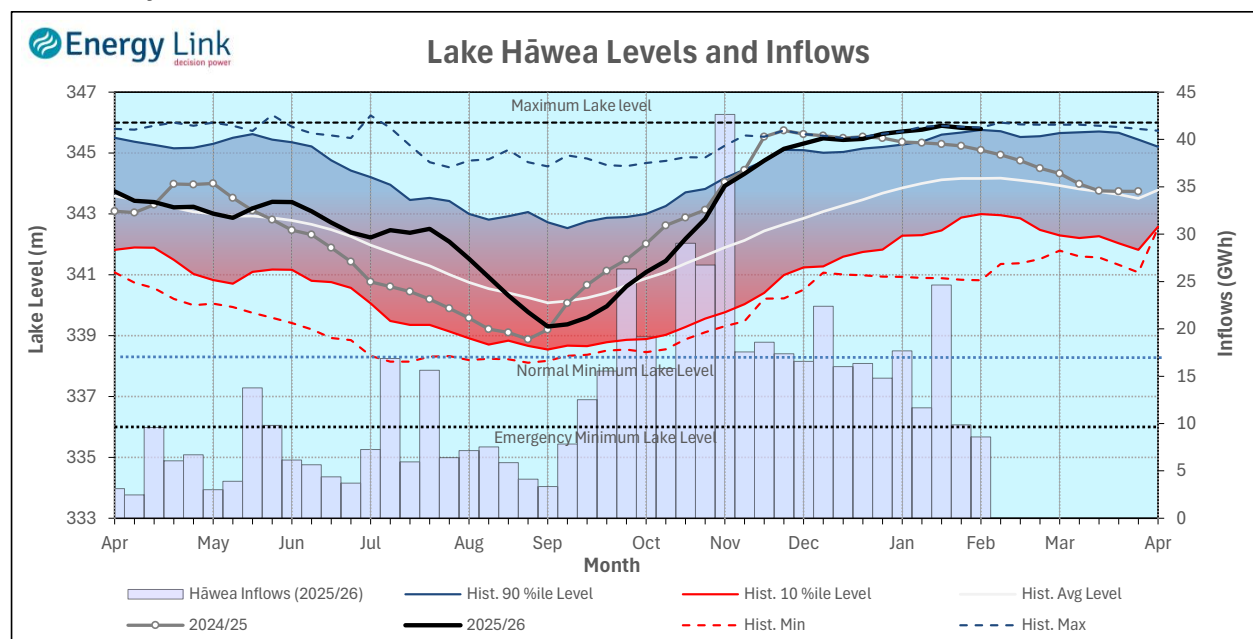
Inflows - Inflows into the Waitaki System decreased 40.6% to 122 GWh.

Generation - Average Waitaki generation decreased 4% to 981 MW.

Hydro Spill - Lake Pūkaki spill was 269 cumecs.

River Flows - Flows from the Ahuriri River fell to 33.8 cumecs while Waitaki River flows were lower than last week averaging 608.6 cumecs.

Clutha System



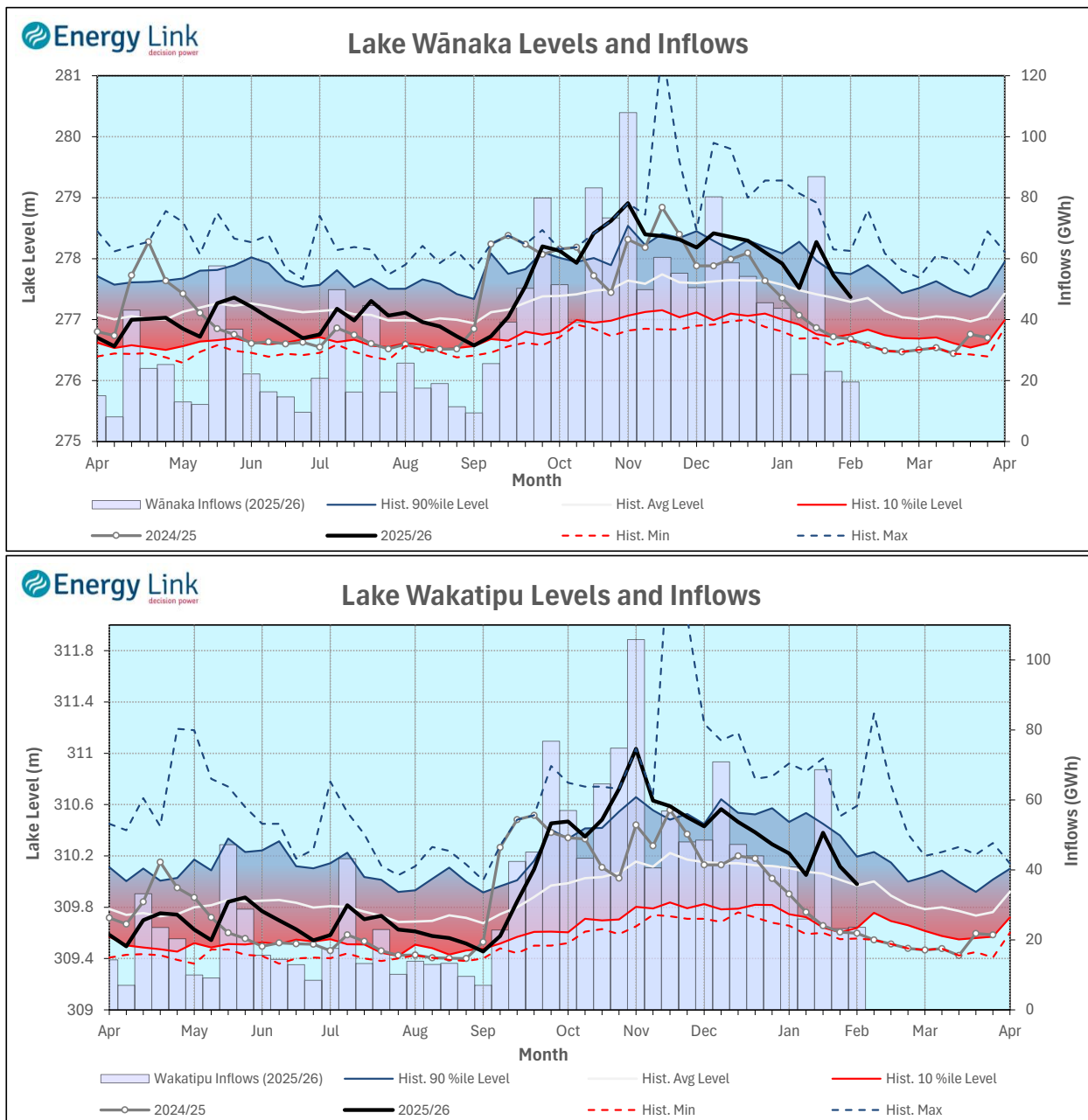
Lake Levels - Total storage for the Clutha System decreased 6.8% to 407 GWh. Lakes Hāwea, Wānaka and Wakatipu ended the week 97.3%, 56% and 52.1% nominally full respectively.

Inflows - Total Inflows into the Clutha System 7.8% lower at 52 GWh.

Generation - Average generation was 22.9% lower at 130 MW.

Hydro Spill - Estimate Spill is 411.7 cumecs.

River Flows - Total outflows from the lakes and Shotover River fell to 591.7 cumecs. This comprised of 65 cumecs from Lake Hāwea, 240 cumecs from Lake Wānaka, 219 cumecs from Lake Wakatipu and 69 cumecs from the Shotover River.



Manapōuri System

