

HydroWatch

Thursday, 22 January 2026

Issue: 1501

A weekly summary relating to New Zealand hydro storage and inflows.

Compiled by Energy Link Ltd.

Storage Summary	South Island Controlled	South Island Uncontrolled	South Island Total	North Island Taupo	Total Storage
Current Storage (GWh)	2,978	517	3,495	536	4,031
Storage Change (GWh)	-55	-139	-194	21	-173

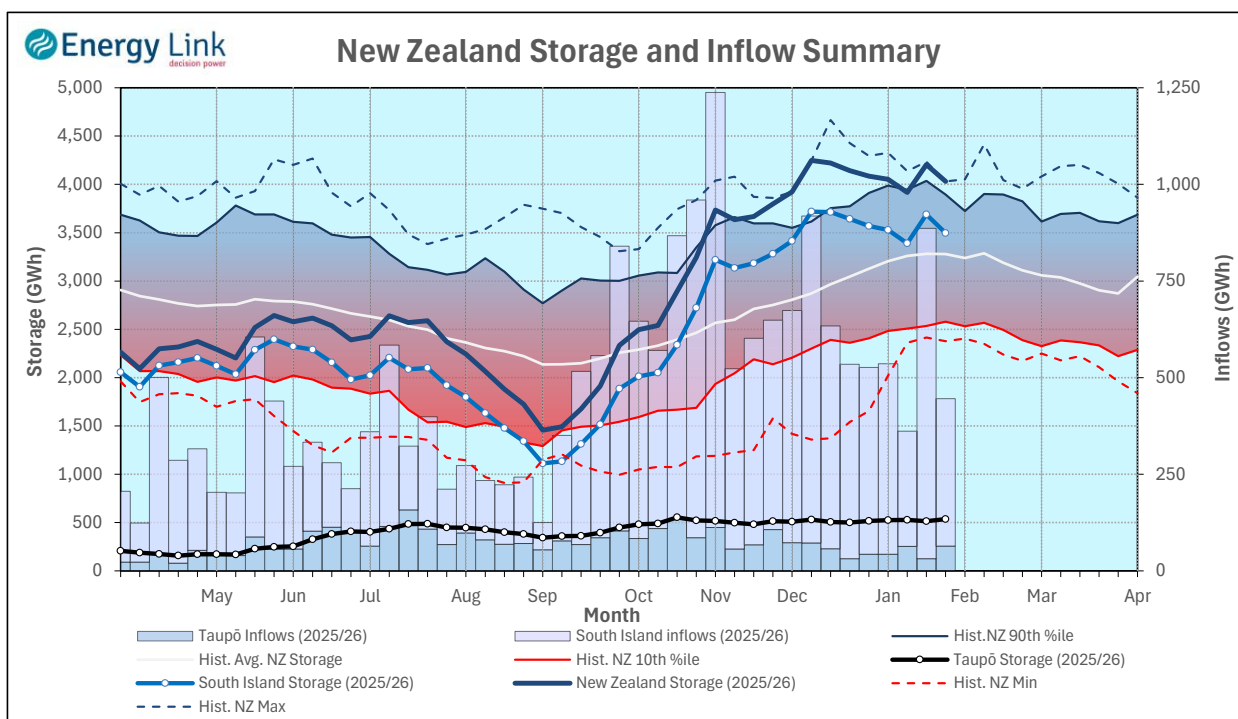
Note: SI Controlled; Takapō, Pūkaki and Hāwea: SI Uncontrolled; Manapōuri, Te Anau, Wānaka, Wakatipu

Transpower Security of Supply	South Island	North Island	New Zealand
Current Storage (GWh)	3,348	536	3,884

Note: These figures are provided to align with Transpower's Security of Supply reporting methodology. Variance from Transpower values is due to differences in generation efficiencies and contingent storage volumes.

New Zealand Summary

Total storage decreased 173 GWh over the last week. South Island controlled storage decreased 1.8% to 2,978 GWh; South Island uncontrolled storage decreased 21% to 517 GWh; with Taupō storage increasing 4.1% to 536 GWh.



Thursday, 22 January 2026					
Storage (GWh)	Manapōuri	Clutha	Waitaki	Waikato	NZ
This Week	370	436	2,689	536	4,031
Last Week	462	486	2,742	515	4,204
% Change	-19.9%	-10.2%	-1.9%	4.1%	-4.1%
Inflow (GWh)	Manapōuri	Clutha	Waitaki	Waikato	NZ
This Week	45	56	280	64	446
Last Week	250	180	425	31	887
% Change	-81.8%	-68.9%	-34.2%	106.8%	-49.7%

Subscribe at www.energylink.co.nz/publications

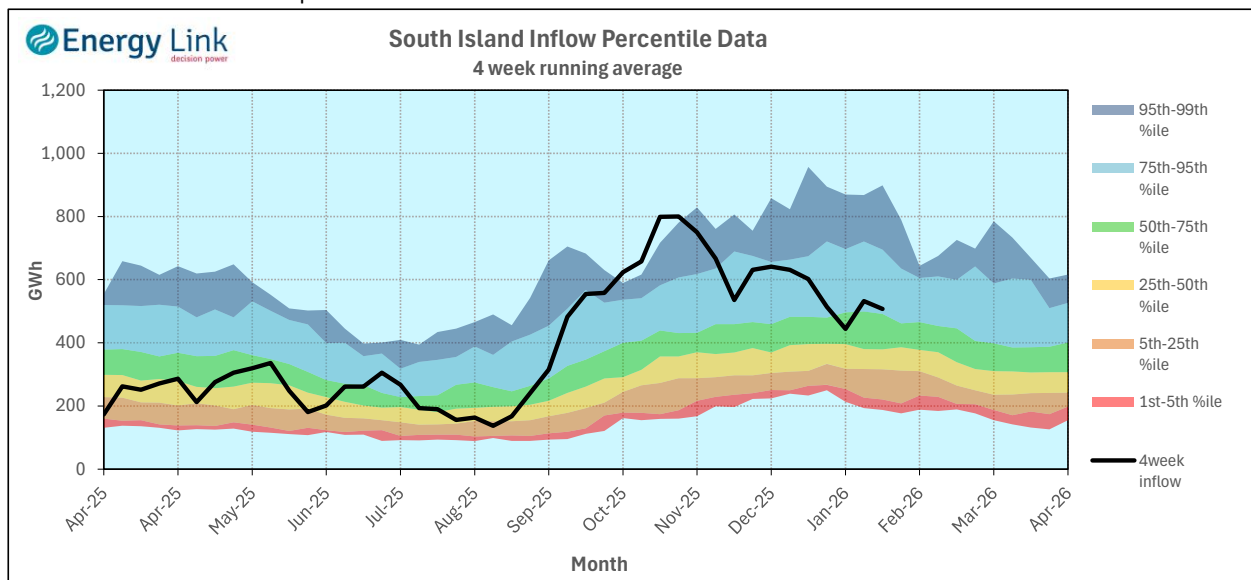
Lake Levels and Outflows

Catchment	Lake	Level (m. asl)	Storage (GWh)	Outflow (cumecs)	Outflow Change
Manapōuri	Manapōuri	178.44	153	147	-44
	Te Anau	202.31	217		
Clutha	Wakatipu	310.12	66	276	-5
	Wānaka	277.73	82	322	
	Hāwea	345.83	289	79	
Waitaki	Takapō	709.87	787		6
	Pūkaki	532.89	1,902		
Waikato	Taupō	357.17	536		-46

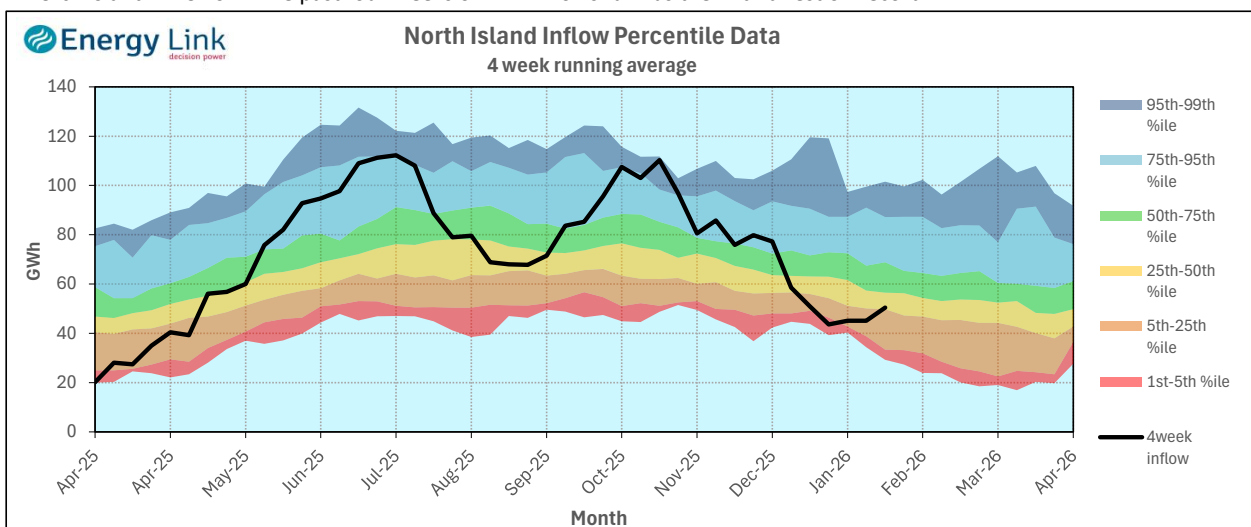
Inflow Summary

The two charts below represent where current inflows are in relation to historic inflow patterns. The percentile values have been calculated using all inflows since 1931.

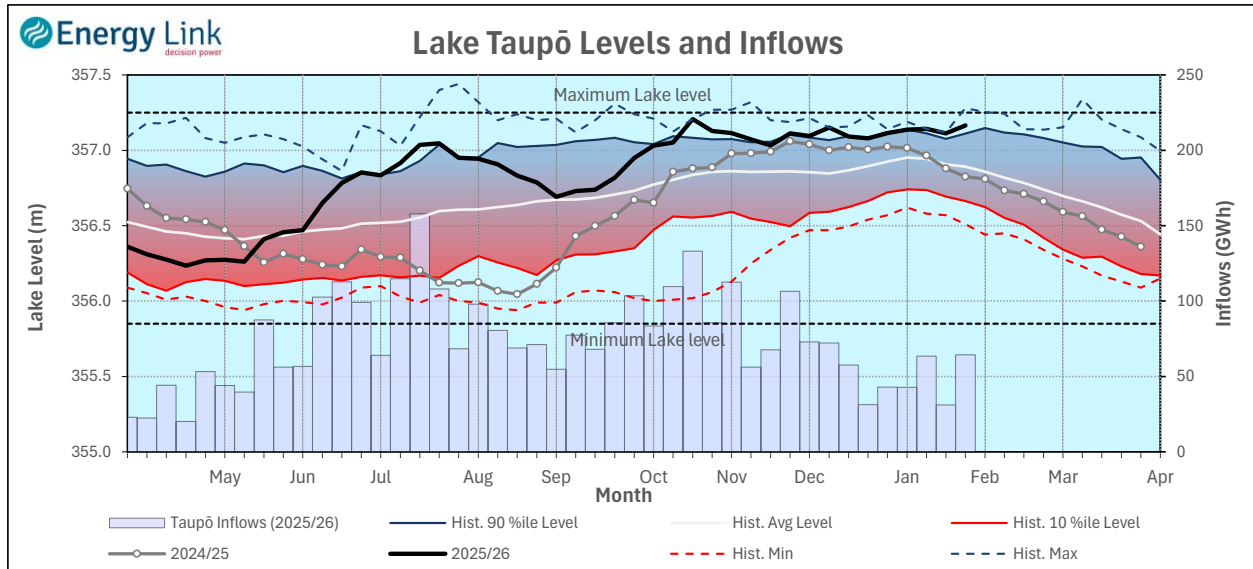
South Island Inflows - The past four weeks of S. I. inflows rank as the 22nd wettest on record.



North Island Inflows - The past four weeks of N. I. inflows rank as the 27th driest on record.



Waikato System

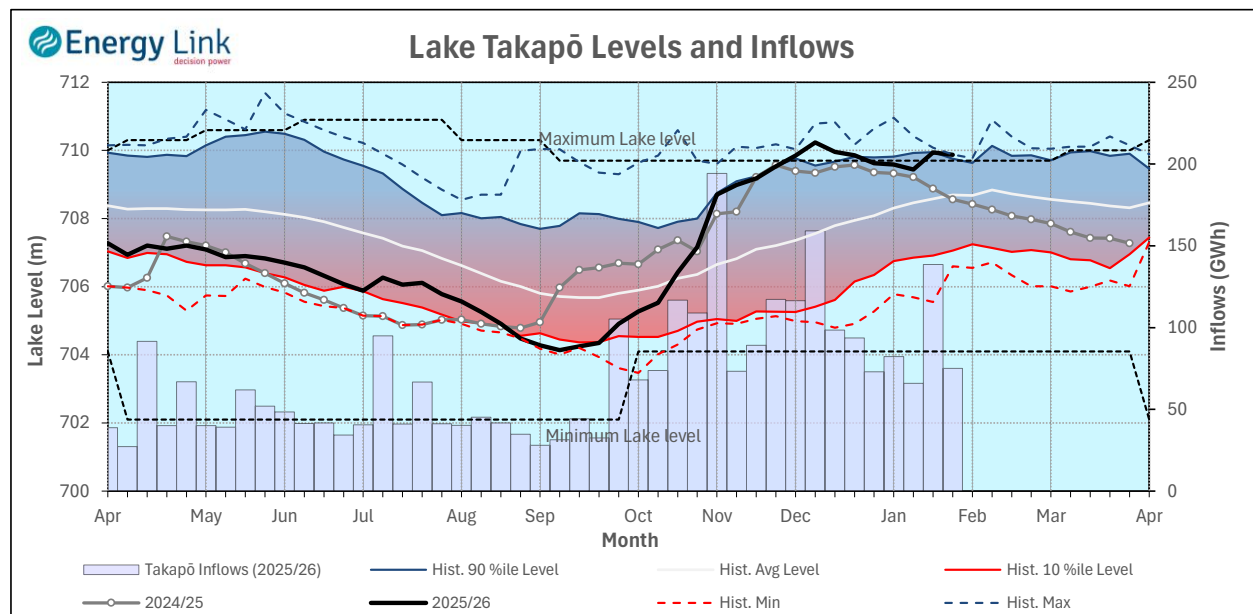


Lake Levels - Lake Taupō storage increased to 93.9% of nominal full at 536 GWh.

Inflows - Inflows increased 106.8% to 64 GWh.

Generation - Average generation decreased 16.2% to 294.6 MW.

Takapō



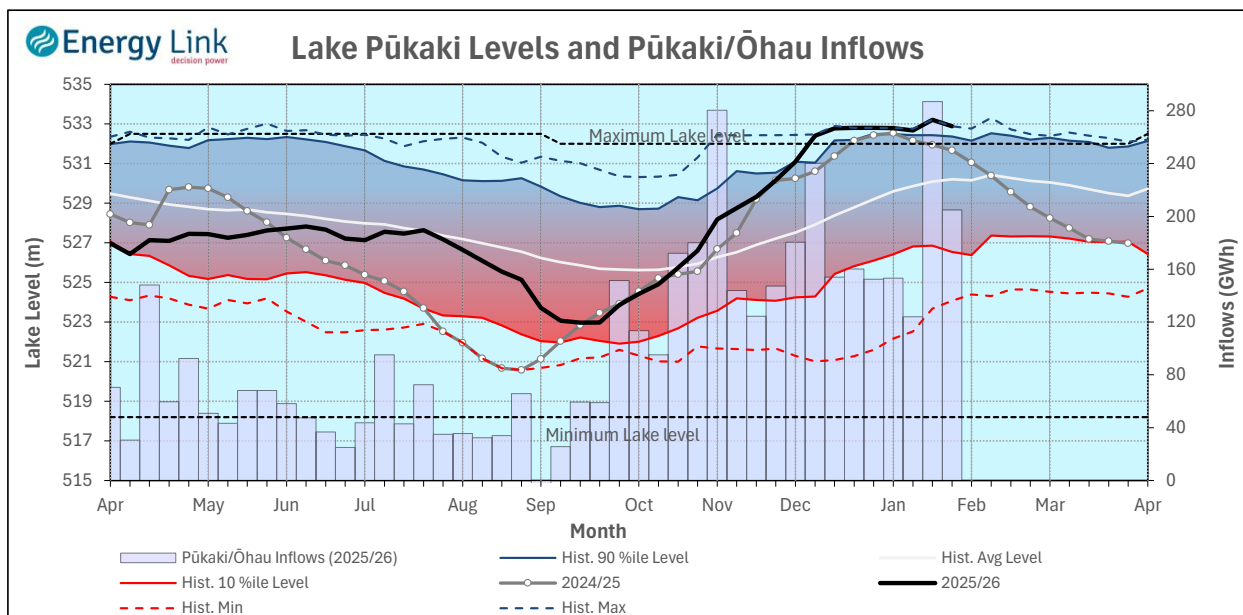
Lake Levels - Lake Takapō ended the week 109% nominally full with storage falling to 787 GWh.

Inflows - Inflows into Takapō decreased 45.9% to 75 GWh.

Generation - Average Takapō generation increased 0.8% to 178.5 MW.

Hydro Spill - Lake Takapō did not spill.

Waitaki System



Lake Levels - Lake Pūkaki ended the week 107% nominally full with storage falling to 1,902 GWh.

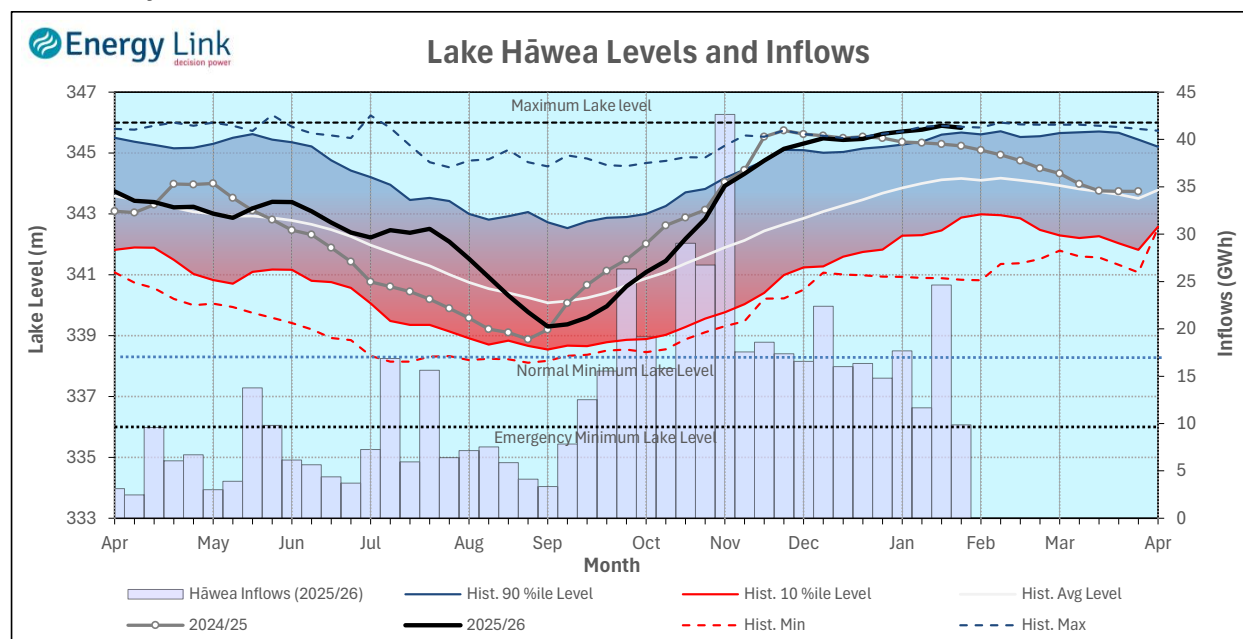
Inflows - Inflows into the Waitaki System decreased 28.6% to 205 GWh.

Generation - Average Waitaki generation decreased 6.3% to 1,022 MW.

Hydro Spill - Lake Pūkaki spill was 446 cumecs.

River Flows - Flows from the Ahuriri River fell to 39.9 cumecs while Waitaki River flows were higher than last week averaging 832.1 cumecs.

Clutha System



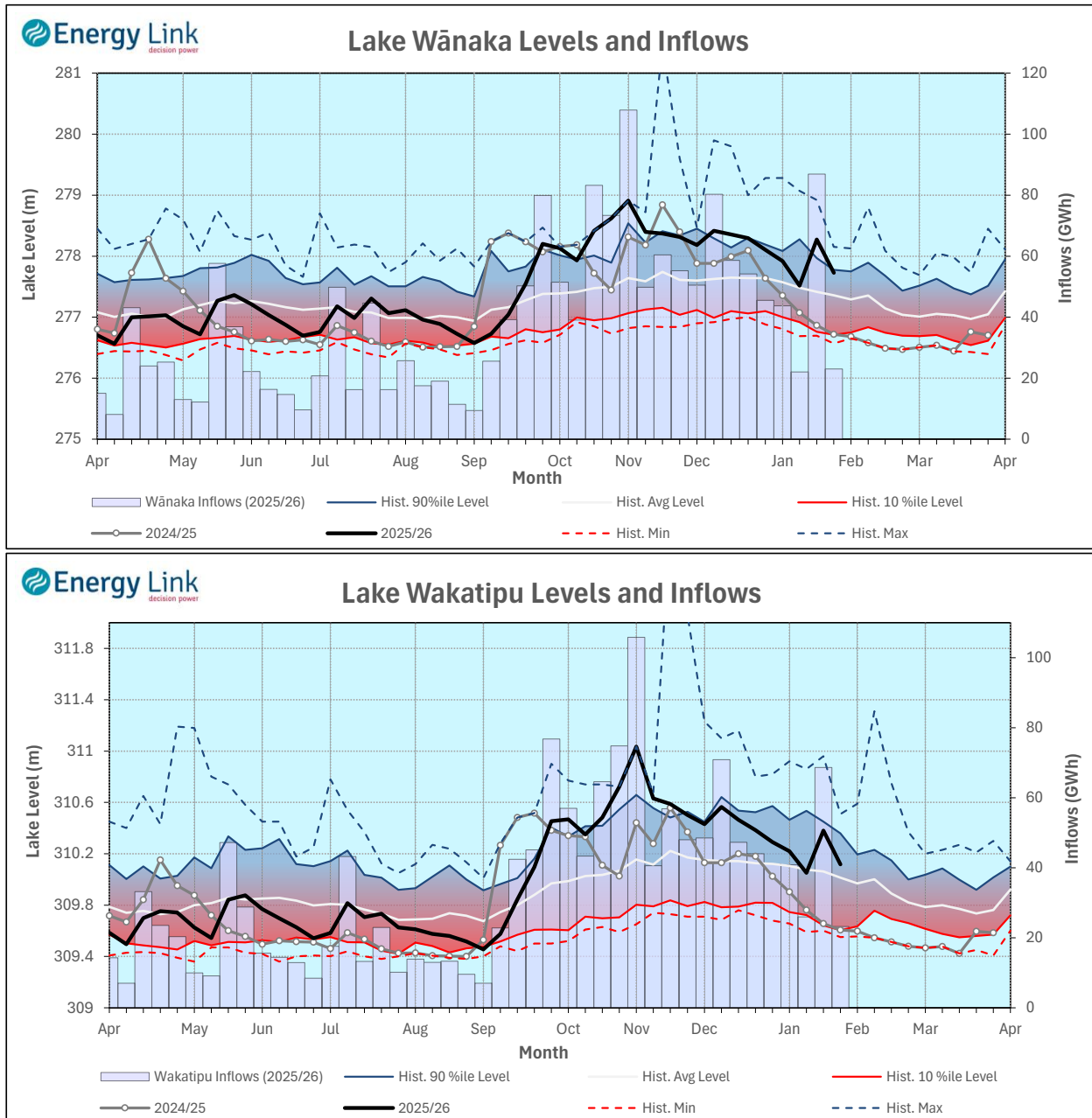
Lake Levels - Total storage for the Clutha System decreased 10.2% to 436 GWh. Lakes Hāwea, Wānaka and Wakatipu ended the week 97.8%, 71.6% and 62% nominally full respectively.

Inflows - Total Inflows into the Clutha System 68.9% lower at 56 GWh.

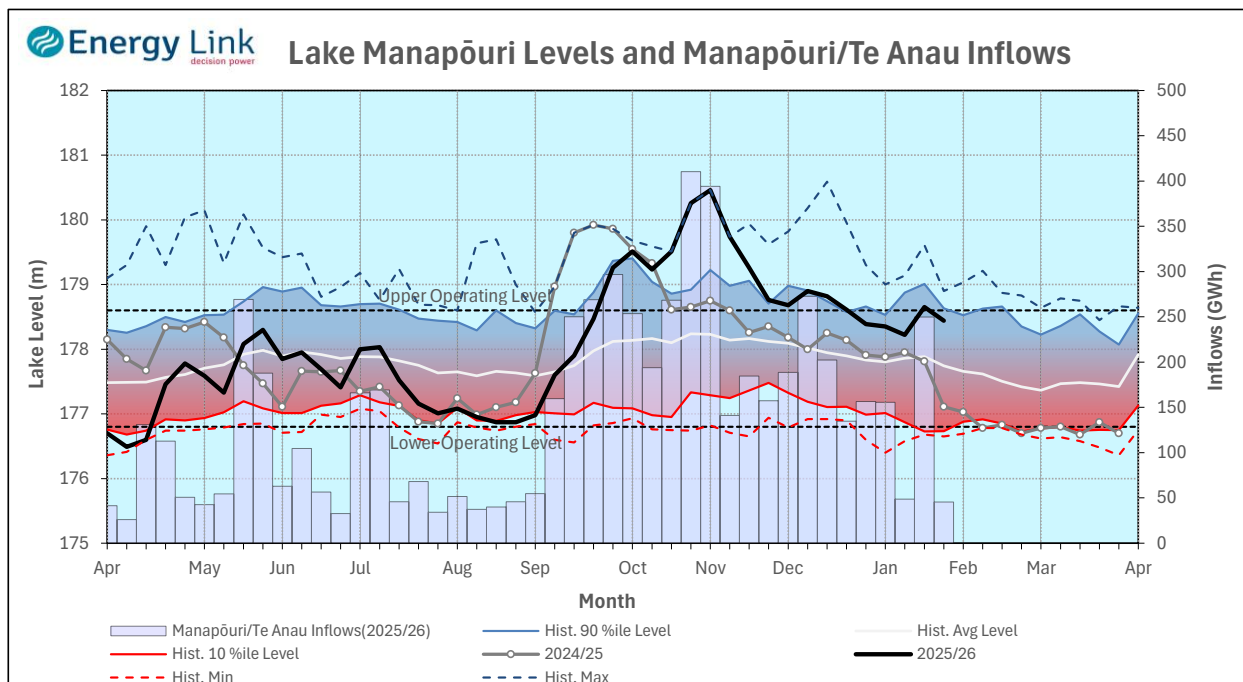
Generation - Average generation was 15.7% lower at 169 MW.

Hydro Spill - Estimate Spill is 513.6 cumecs.

River Flows - Total outflows from the lakes and Shotover River fell to 732.3 cumecs. This comprised of 79 cumecs from Lake Hāwea, 322 cumecs from Lake Wānaka, 276 cumecs from Lake Wakatipu and 55 cumecs from the Shotover River.



Manapōuri System



Lake Levels - Total storage for the Manapōuri System decreased 19.9% to 370 GWh with Lake Manapōuri ending the week 94.1% nominally full and Lake Te Anau ending the week 78.8% nominally full.

Inflows - Total inflows into the Manapōuri System decreased 81.8% to 45 GWh.

Generation - Average generation was 1% higher at 617 MW.

Hydro Spill - Estimated spill at the Māraroa Weir was 147 cumecs.

Operating Range - Lakes Manapōuri and Te Anau are operating in the upper end of their respective 'Main operating range'.

