

HydroWatch

Thursday, 8 January 2026
Issue: 1499
A weekly summary relating to New Zealand hydro storage and inflows.
Compiled by Energy Link Ltd.

| Storage Summary | South Island Controlled | South Island Uncontrolled | South Island Total | North Island Taupo | Total Storage |
|-----------------------|-------------------------|---------------------------|--------------------|--------------------|---------------|
| Current Storage (GWh) | 2,897 | 492 | 3,389 | 527 | 3,916 |
| Storage Change (GWh) | -31 | -108 | -139 | 2 | -137 |

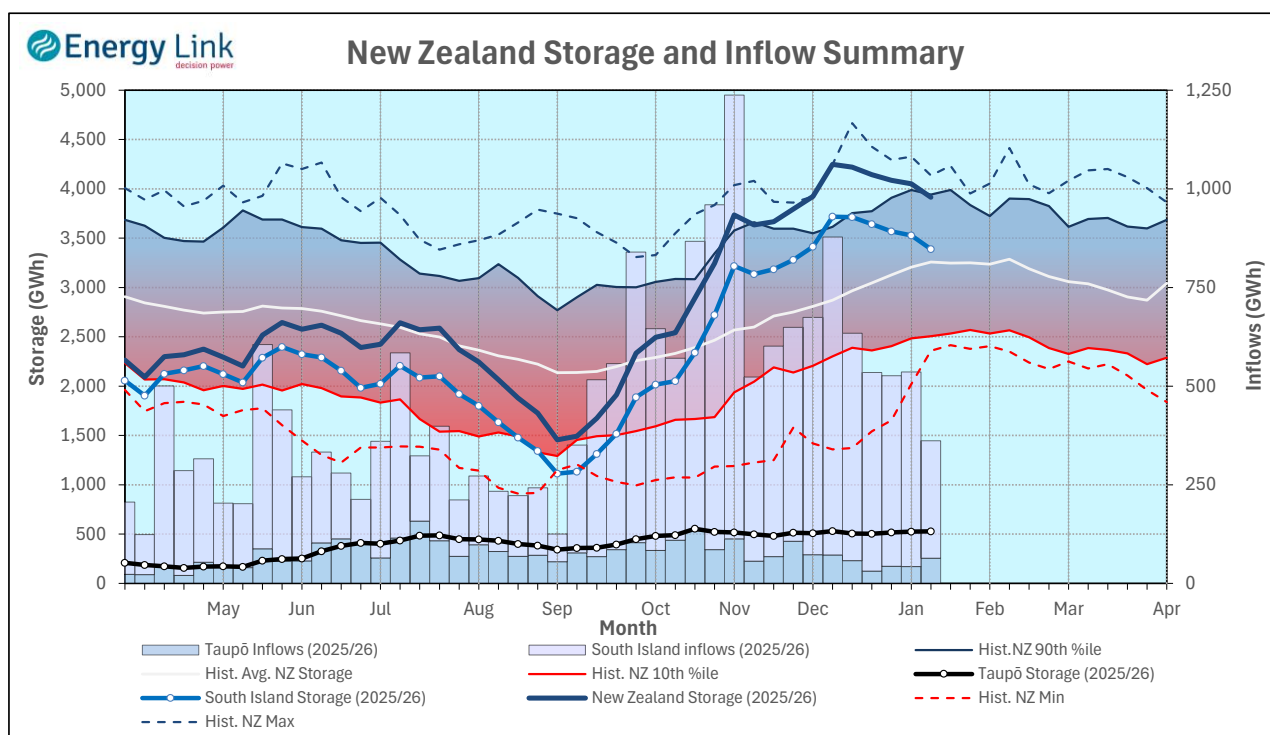
Note: SI Controlled; Takapō, Pūkaki and Hāwea: SI Uncontrolled; Manapōuri, Te Anau, Wānaka, Wakatipu

| Transpower Security of Supply | South Island | North Island | New Zealand |
|-------------------------------|--------------|--------------|-------------|
| Current Storage (GWh) | 3,257 | 527 | 3,784 |

Note: These figures are provided to align with Transpower's Security of Supply reporting methodology. Variance from Transpower values is due to differences in generation efficiencies and contingent storage volumes.

New Zealand Summary

Total storage decreased 137 GWh over the last week. South Island controlled storage decreased 1.1% to 2,897 GWh; South Island uncontrolled storage decreased 18% to 492 GWh; with Taupō storage increasing 0.4% to 527 GWh.



| Thursday, 8 January 2026 | | | | | |
|--------------------------|-----------|--------|---------|---------|--------|
| Storage (GWh) | Manapōuri | Clutha | Waitaki | Waikato | NZ |
| This Week | 360 | 418 | 2,611 | 527 | 3,916 |
| Last Week | 435 | 449 | 2,644 | 525 | 4,052 |
| % Change | -17.3% | -6.8% | -1.3% | 0.4% | -3.4% |
| Inflow (GWh) | Manapōuri | Clutha | Waitaki | Waikato | NZ |
| This Week | 49 | 60 | 190 | 63 | 361 |
| Last Week | 156 | 102 | 236 | 43 | 536 |
| % Change | -68.7% | -41.6% | -19.4% | 48.3% | -32.6% |

Subscribe at www.energylink.co.nz/publications

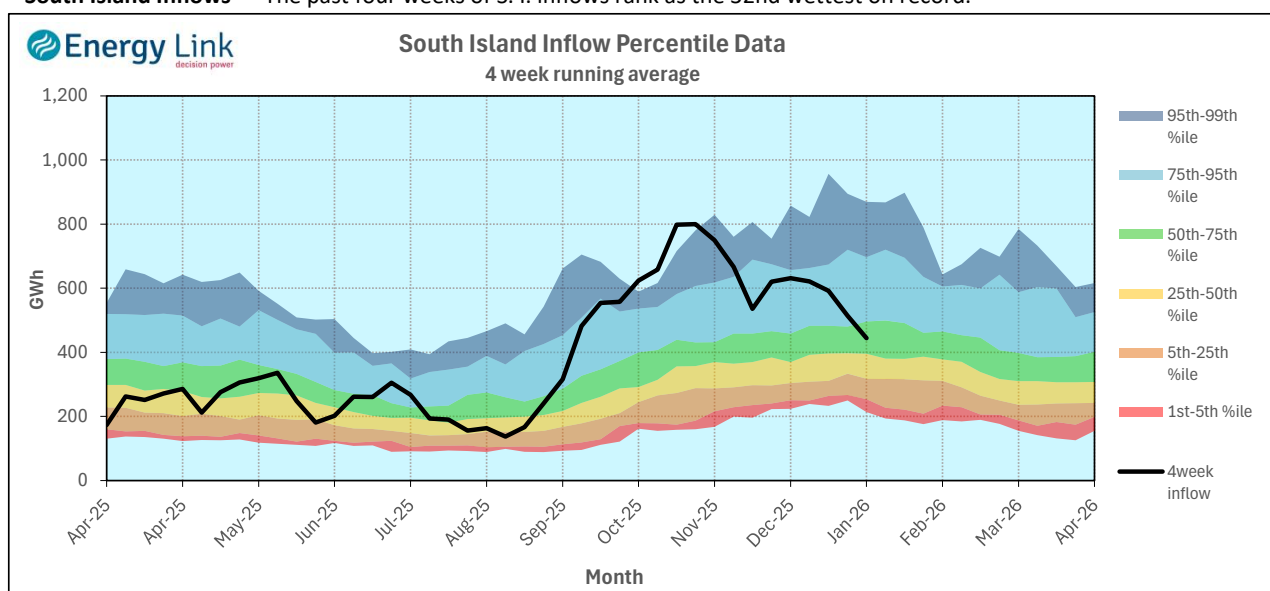
Lake Levels and Outflows

| Catchment | Lake | Level (m. asl) | Storage (GWh) | Outflow (cumecs) | Outflow Change |
|-----------|-----------|-------------------|------------------|---------------------|-------------------|
| Manapōuri | Manapōuri | 178.22 | 140 | 41 | -191 |
| | Te Anau | 202.33 | 220 | | |
| Clutha | Wakatipu | 310.05 | 61 | 247 | -50 |
| | Wānaka | 277.51 | 71 | 270 | -69 |
| | Hāwea | 345.77 | 287 | 60 | -36 |
| Waitaki | Takapō | 709.44 | 739 | | |
| | Pūkaki | 532.67 | 1,871 | | |
| Waikato | Taupō | 357.14 | 527 | | |

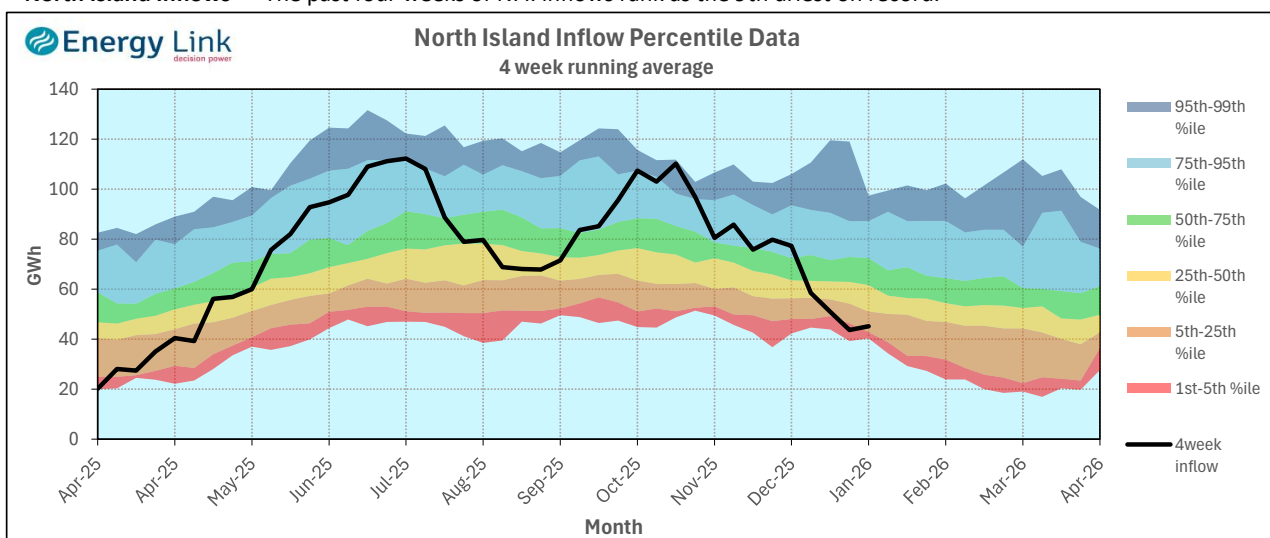
Inflow Summary

The two charts below represent where current inflows are in relation to historic inflow patterns. The percentile values have been calculated using all inflows since 1931.

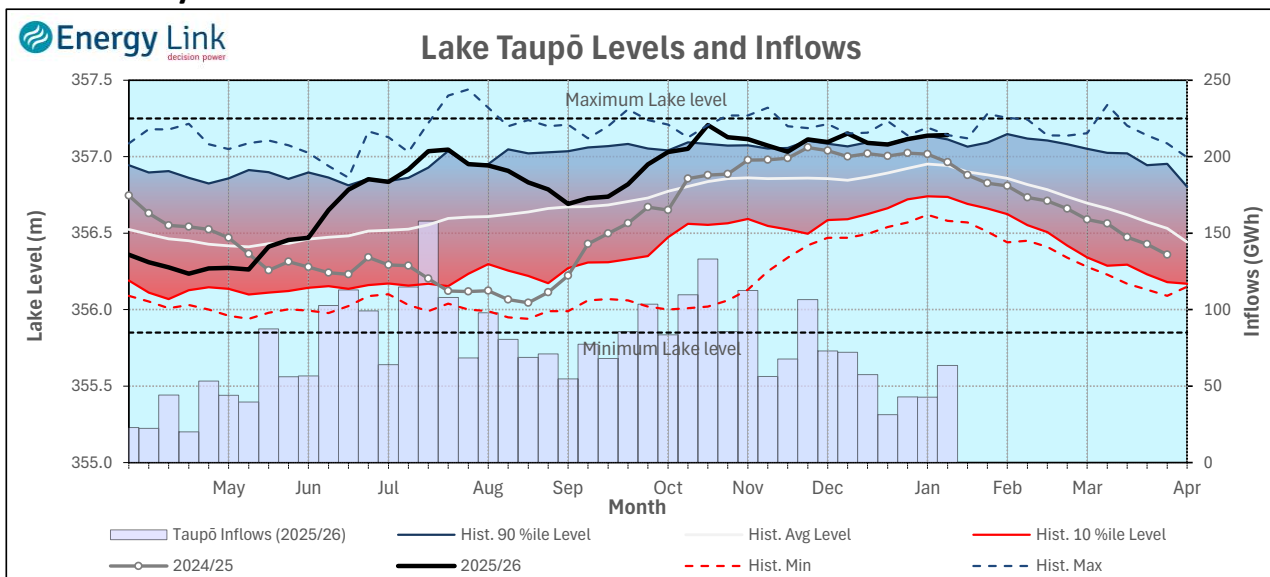
South Island Inflows - The past four weeks of S. I. inflows rank as the 32nd wettest on record.



North Island Inflows - The past four weeks of N. I. inflows rank as the 9th driest on record.



Waikato System

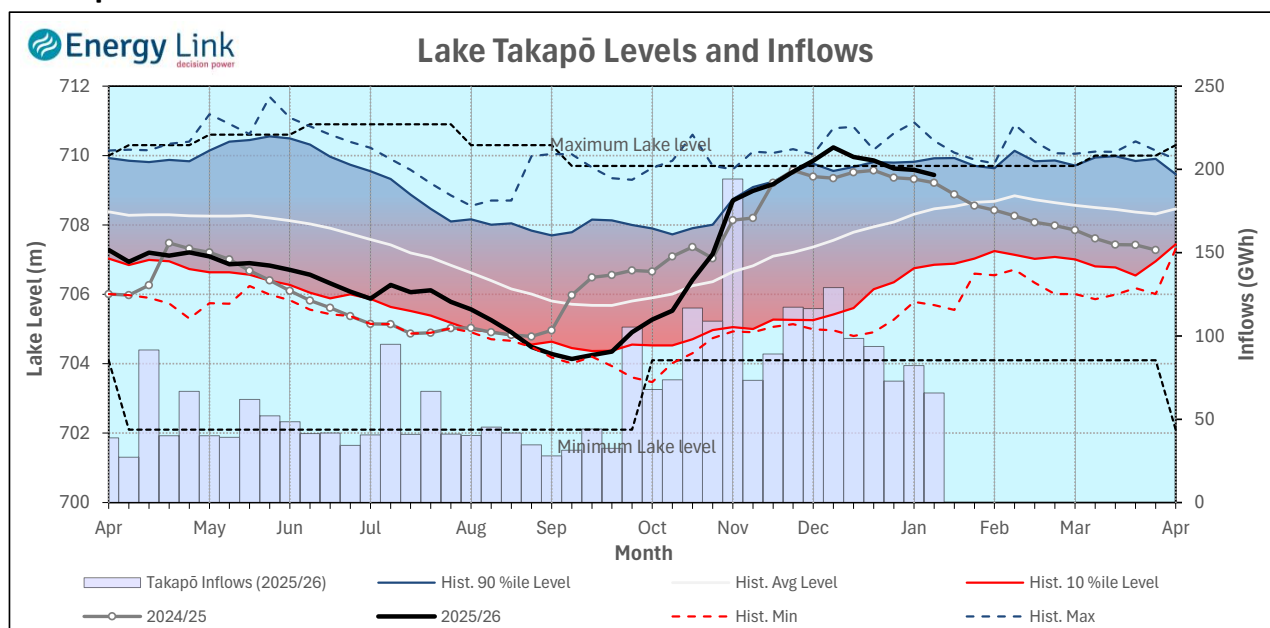


Lake Levels - Lake Taupō storage increased to 92.3% of nominal full at 527 GWh.

Inflows - Inflows increased 48.3% to 63 GWh.

Generation - Average generation increased 34.3% to 207.4 MW.

Takapō



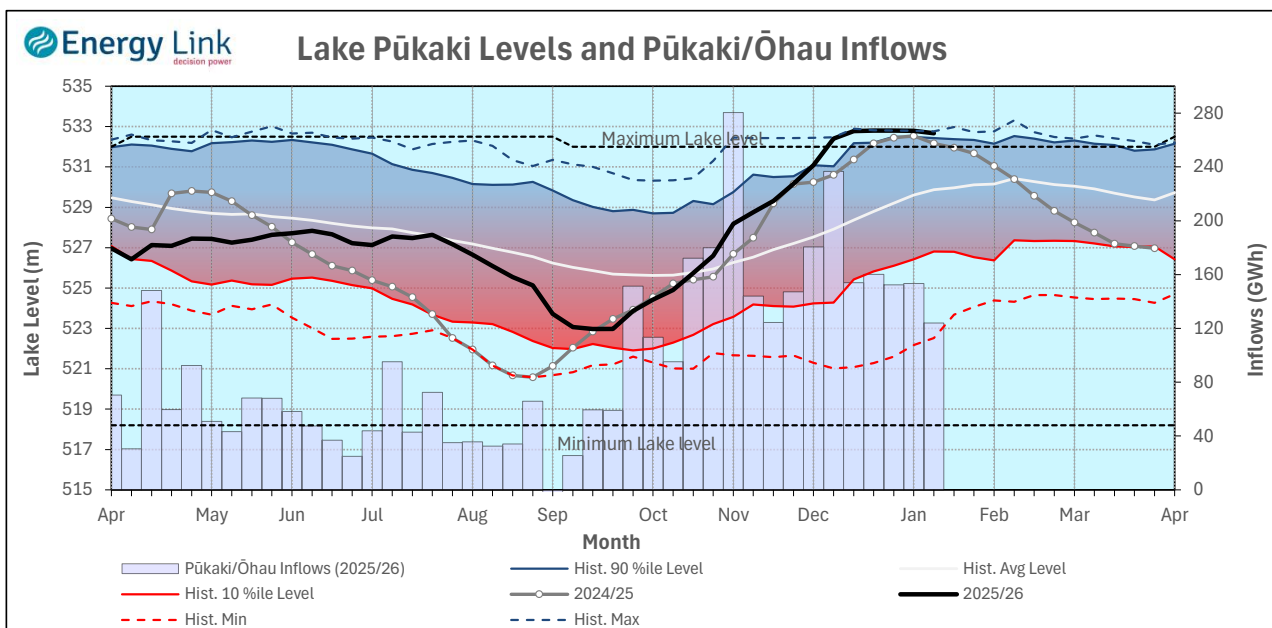
Lake Levels - Lake Takapō ended the week 102% nominally full with storage falling to 739 GWh.

Inflows - Inflows into Takapō decreased 20% to 66 GWh.

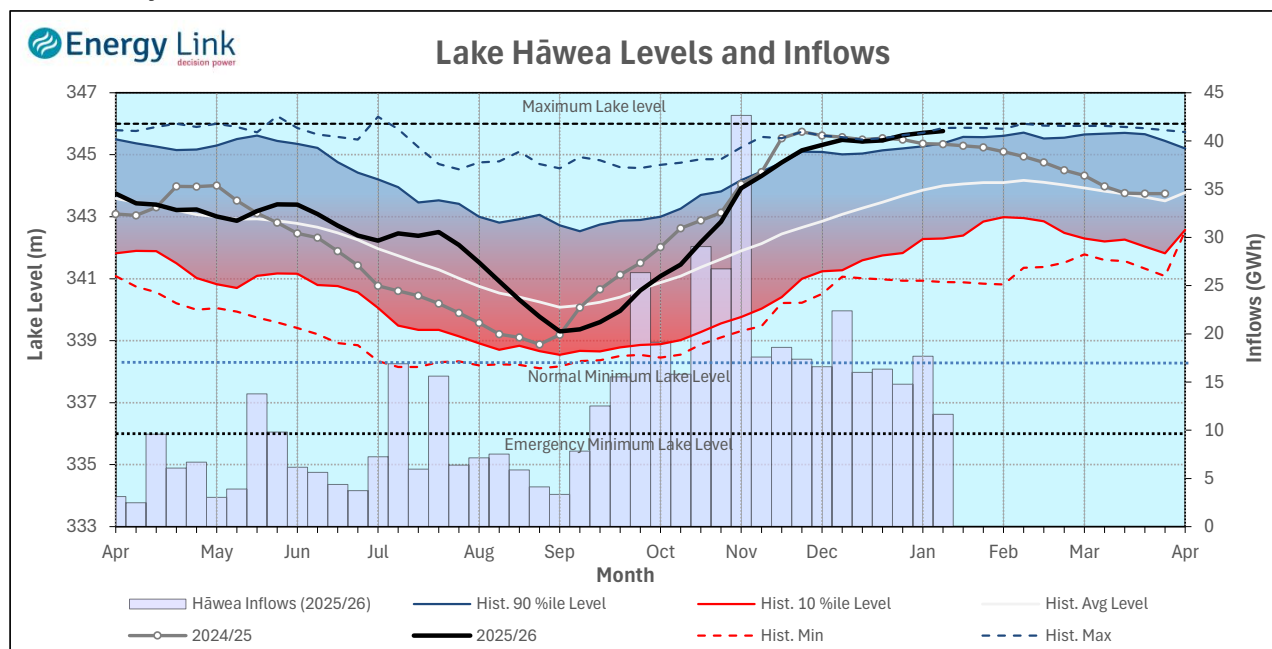
Generation - Average Takapō generation increased 0.4% to 176.1 MW.

Hydro Spill - Lake Takapō did not spill.

Waitaki System



Clutha System



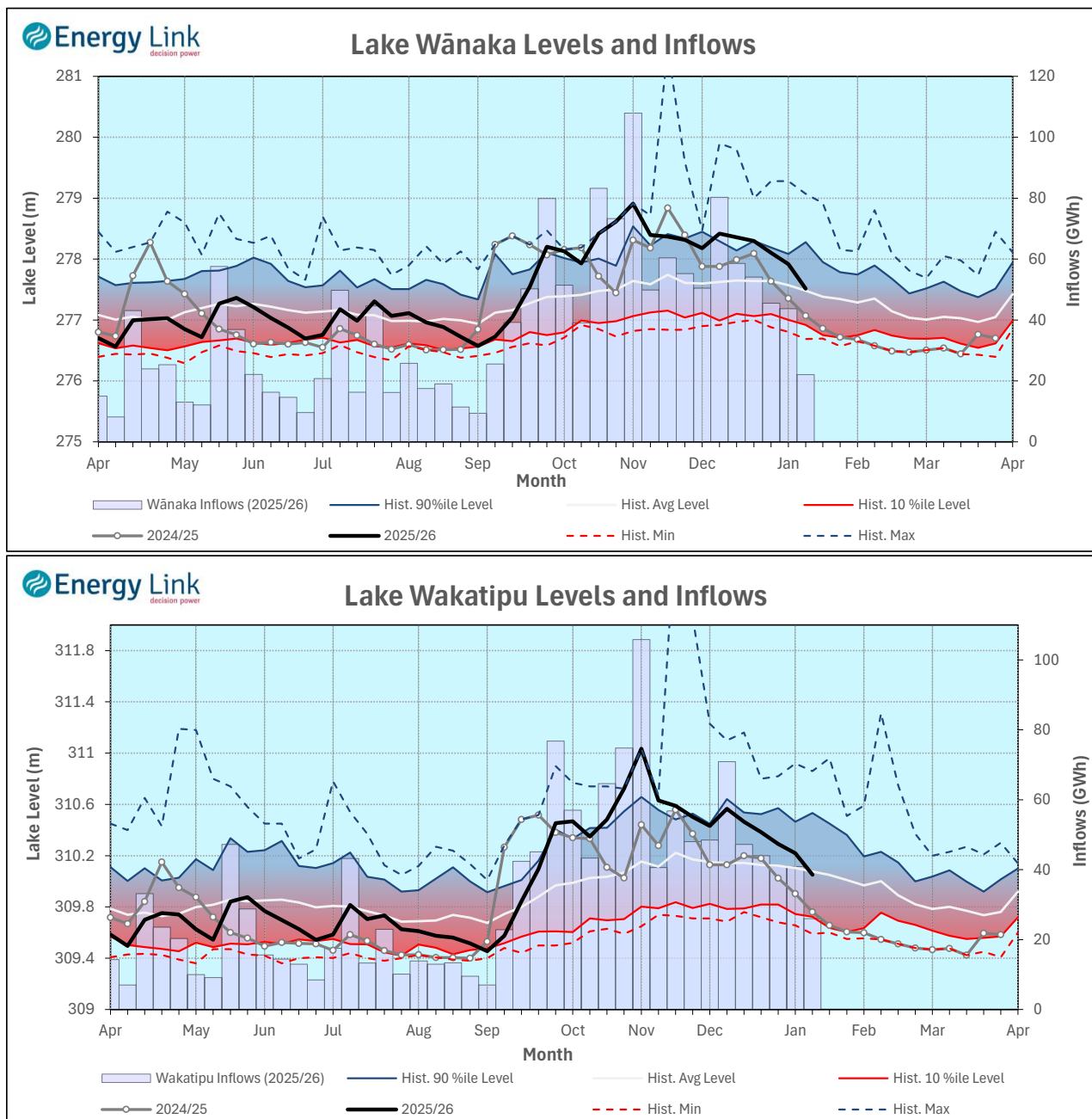
Lake Levels - Total storage for the Clutha System decreased 6.8% to 418 GWh. Lakes Hāwea, Wānaka and Wakatipu ended the week 97%, 62.3% and 57.3% nominally full respectively.

Inflows - Total Inflows into the Clutha System 41.6% lower at 60 GWh.

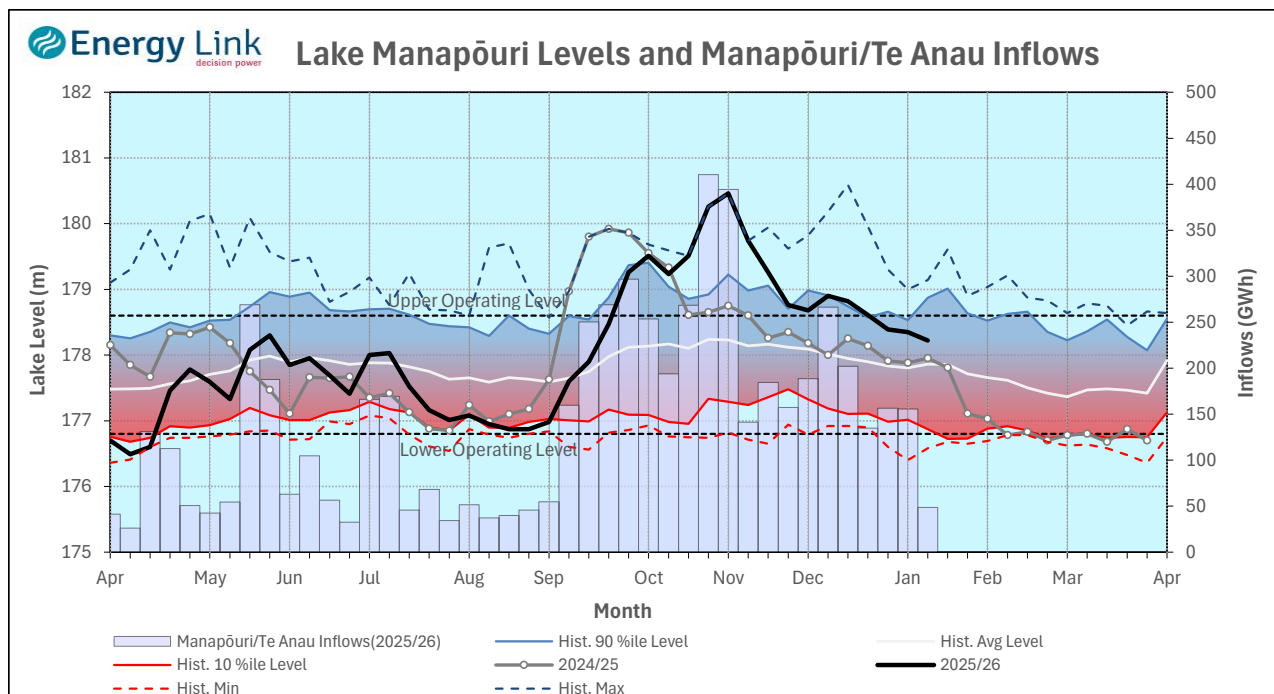
Generation - Average generation was 136.9% higher at 88 MW.

Hydro Spill - Estimate Spill is 498.7 cumecs.

River Flows - Total outflows from the lakes and Shotover River fell to 637 cumecs. This comprised of 60 cumecs from Lake Hāwea, 270 cumecs from Lake Wānaka, 247 cumecs from Lake Wakatipu and 60 cumecs from the Shotover River.



Manapōuri System



Lake Levels - Total storage for the Manapōuri System decreased 17.3% to 360 GWh with Lake Manapōuri ending the week 86% nominally full and Lake Te Anau ending the week 79.9% nominally full.

Inflows - Total inflows into the Manapōuri System decreased 68.7% to 49 GWh.

Generation - Average generation was 6.1% lower at 698 MW.

Hydro Spill - Estimated spill at the Māraroa Weir was 41 cumecs.

Operating Range - Lakes Manapōuri and Te Anau are operating in the upper end of their respective 'Main operating range'.

