

HydroWatch

Thursday, 11 December 2025
Issue: 1495
A weekly summary relating to New Zealand hydro storage and inflows.
Compiled by Energy Link Ltd.

Storage Summary	South Island Controlled	South Island Uncontrolled	South Island Total	North Island Taupo	Total Storage
Current Storage (GWh)	2,957	758	3,714	506	4,220
Storage Change (GWh)	18	-21	-3	-24	-28

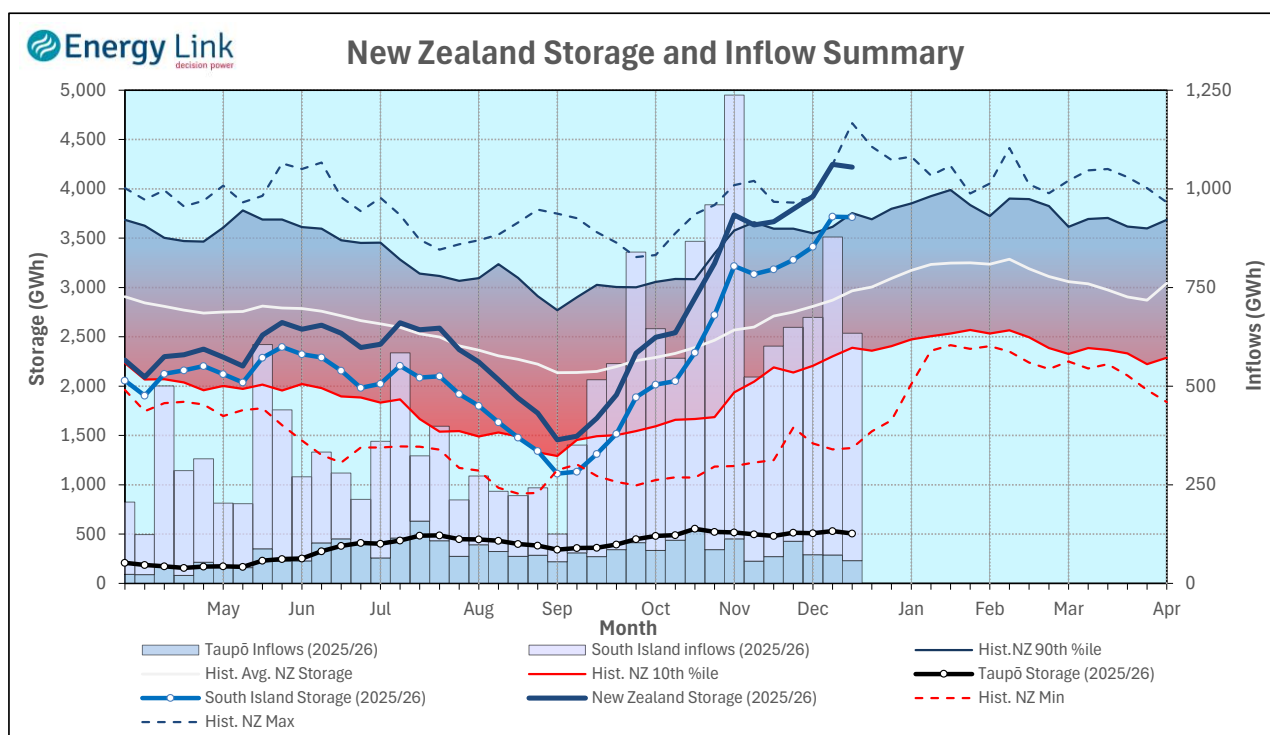
Note: SI Controlled; Takapō, Pūkaki and Hāwea: SI Uncontrolled; Manapōuri, Te Anau, Wānaka, Wakatipu

Transpower Security of Supply	South Island	North Island	New Zealand
Current Storage (GWh)	3,509	506	4,016

Note: These figures are provided to align with Transpower's Security of Supply reporting methodology. Variance from Transpower values is due to differences in generation efficiencies and contingent storage volumes.

New Zealand Summary

Total storage decreased 28 GWh over the last week. South Island controlled storage increased 0.6% to 2,957 GWh; South Island uncontrolled storage decreased 3% to 758 GWh; with Taupō storage decreasing 4.6% to 506 GWh.



Thursday, 11 December 2025					
Storage (GWh)	Manapōuri	Clutha	Waitaki	Waikato	NZ
This Week	553	479	2,683	506	4,220
Last Week	564	491	2,663	531	4,248
% Change	-1.9%	-2.6%	0.8%	-4.6%	-0.7%
Inflow (GWh)	Manapōuri	Clutha	Waitaki	Waikato	NZ
This Week	202	122	252	58	634
Last Week	266	174	366	72	878
% Change	-24.1%	-29.8%	-31.0%	-20.3%	-27.8%

Subscribe at www.energylink.co.nz/publications

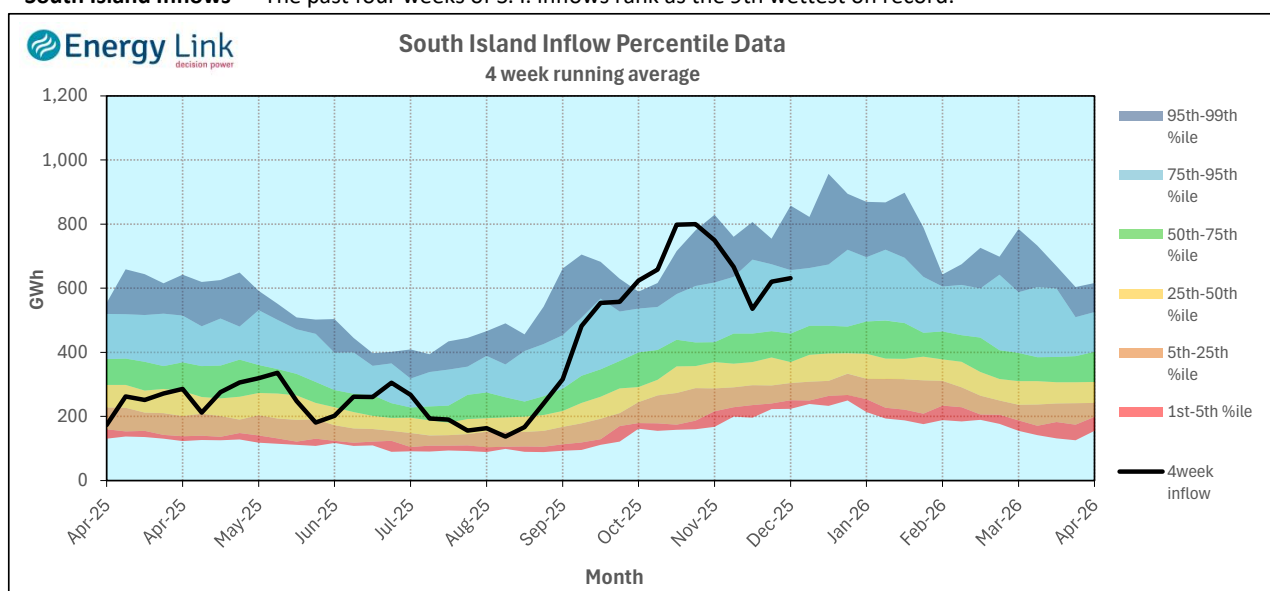
Lake Levels and Outflows

Catchment	Lake	Level (m. asl)	Storage (GWh)	Outflow (cumecs)	Outflow Change
Manapōuri	Manapōuri	178.82	176	359	-36
	Te Anau	203.38	377		
Clutha	Wakatipu	310.47	92	351	-39
	Wānaka	278.36	113	395	
	Hāwea	345.43	274	117	
Waitaki	Takapō	709.96	796		-44
	Pūkaki	532.78	1,886		
Waikato	Taupō	357.09	506		15

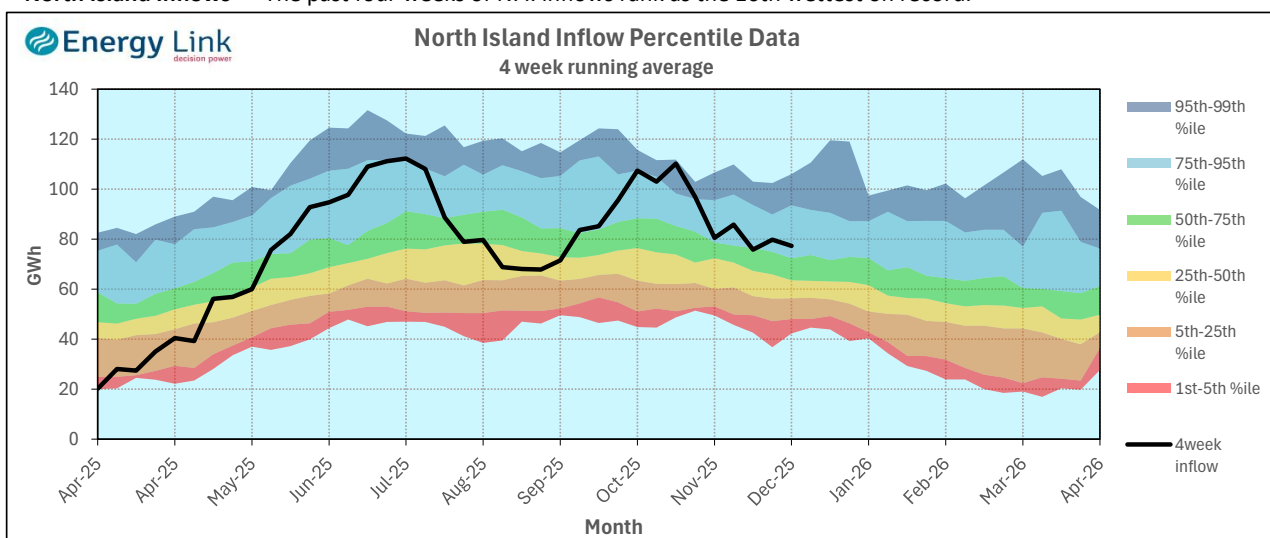
Inflow Summary

The two charts below represent where current inflows are in relation to historic inflow patterns. The percentile values have been calculated using all inflows since 1931.

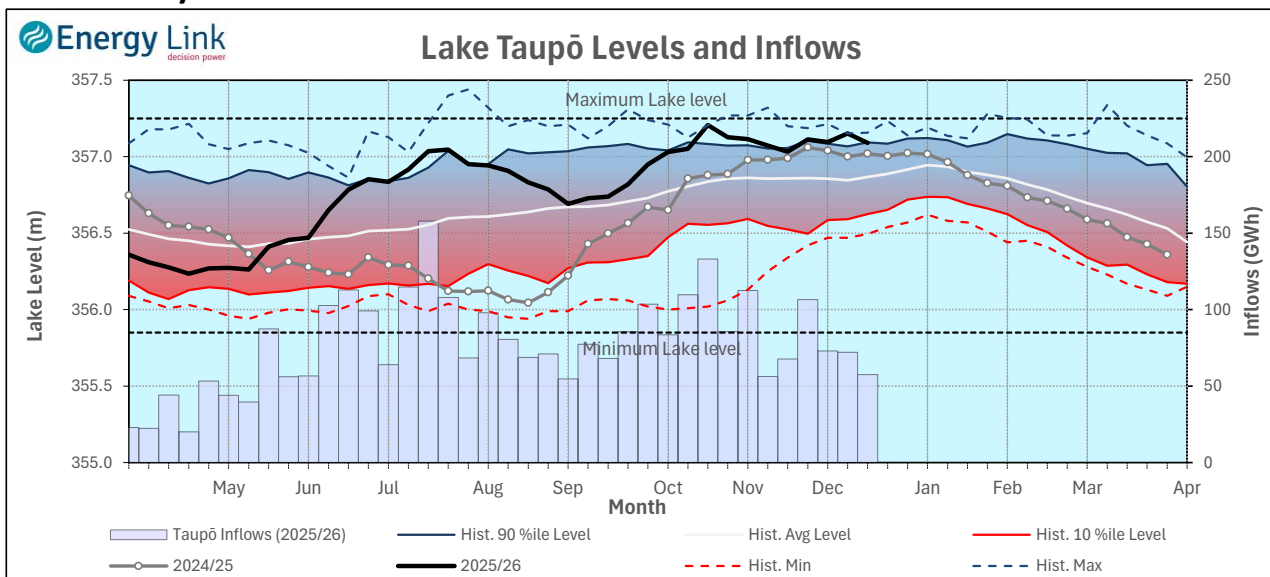
South Island Inflows - The past four weeks of S. I. inflows rank as the 9th wettest on record.



North Island Inflows - The past four weeks of N. I. inflows rank as the 16th wettest on record.



Waikato System

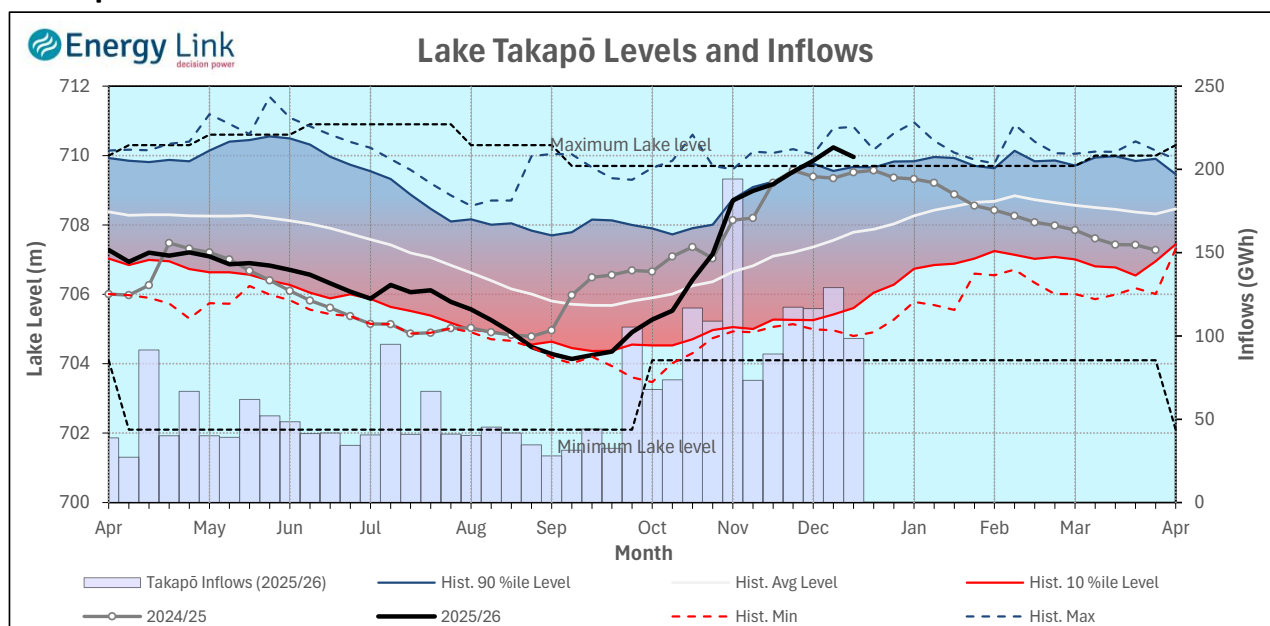


Lake Levels - Lake Taupō storage fell to 88.7% of nominal full at 506 GWh.

Inflows - Inflows decreased 20.3% to 58 GWh.

Generation - Average generation decreased 1.9% to 426 MW.

Takapō



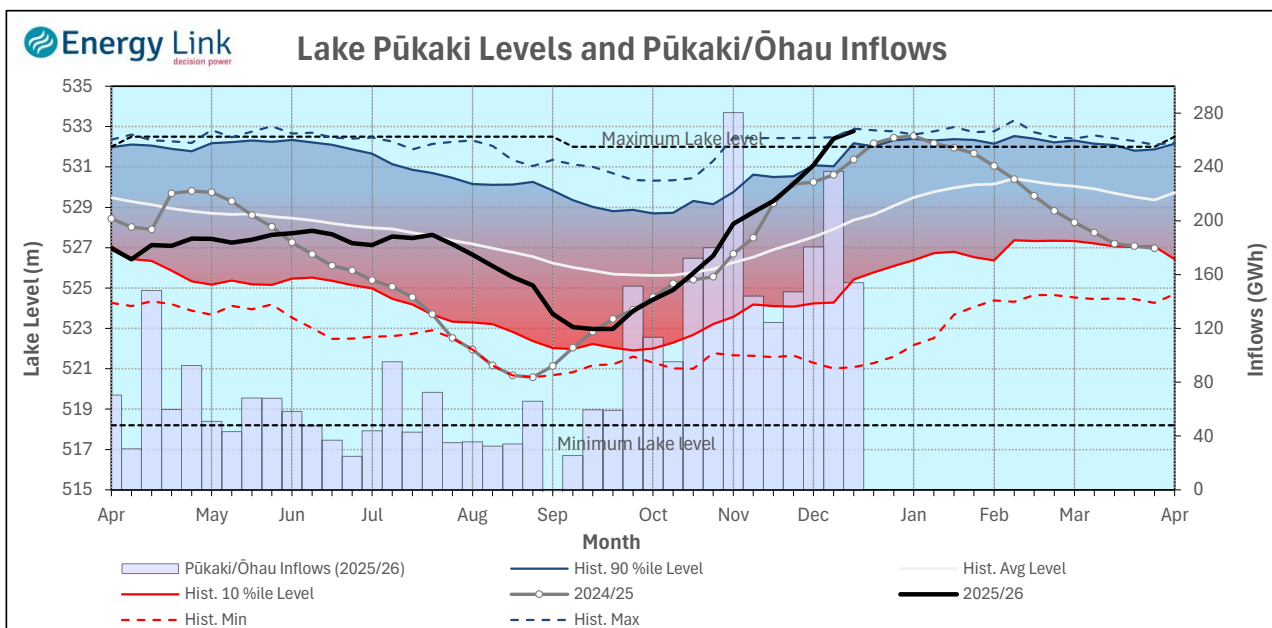
Lake Levels - Lake Takapō ended the week 110% nominally full with storage falling to 796 GWh.

Inflows - Inflows into Takapō decreased 23.7% to 98 GWh.

Generation - Average Takapō generation remained steady at 183.5 MW.

Hydro Spill - Lake Takapō spill was 64 cumecs.

Waitaki System



Lake Levels - Lake Pūkaki ended the week 106% nominally full with storage increasing to 1,886 GWh.

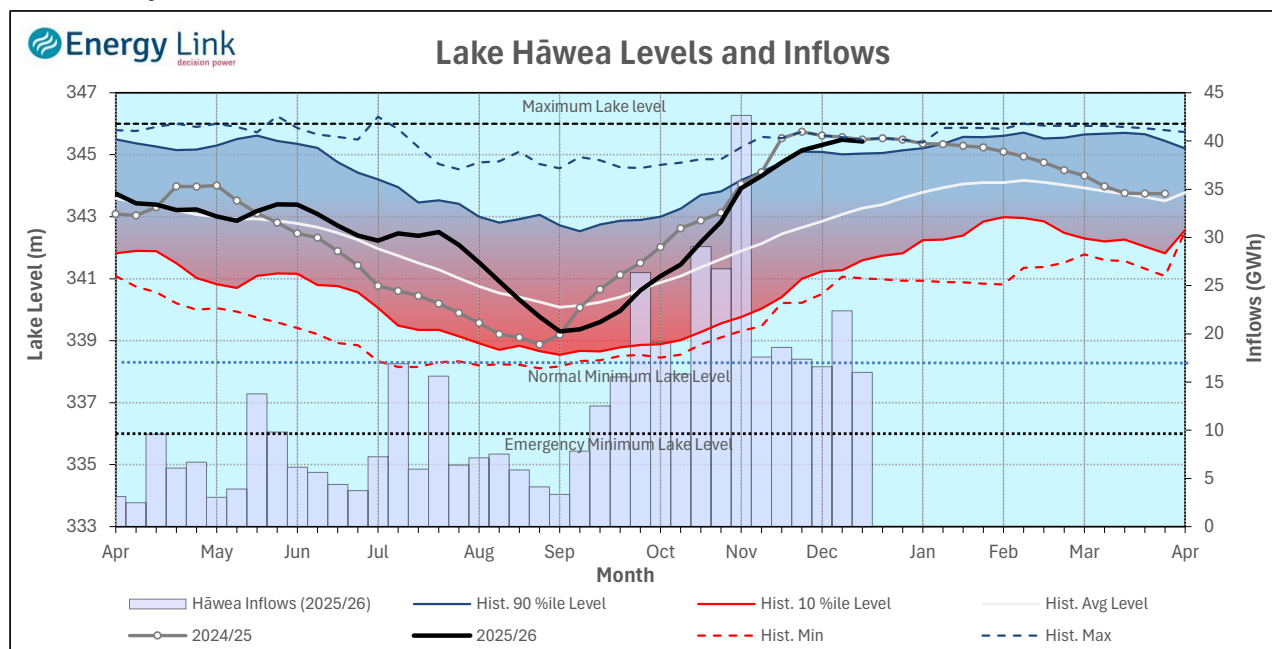
Inflows - Inflows into the Waitaki System decreased 35% to 154 GWh.

Generation - Average Waitaki generation increased 18.8% to 944 MW.

Hydro Spill - Lake Pūkaki spill was 141 cumecs.

River Flows - Flows from the Ahuriri River fell to 37.6 cumecs while Waitaki River flows were higher than last week averaging 500.6 cumecs.

Clutha System



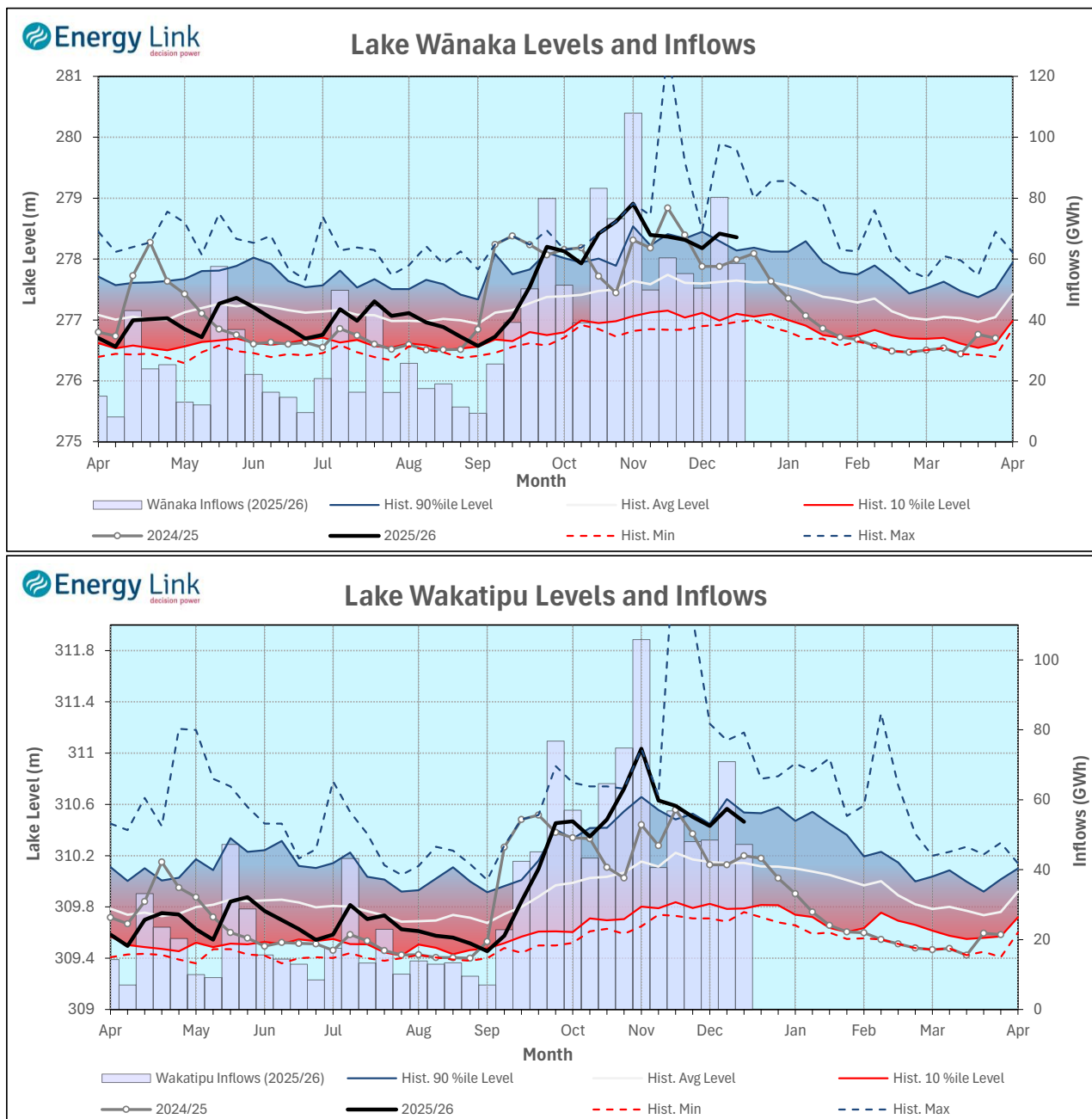
Lake Levels - Total storage for the Clutha System decreased 2.6% to 479 GWh. Lakes Hāwea, Wānaka and Wakatipu ended the week 92.7%, 98.9% and 86.8% nominally full respectively.

Inflows - Total Inflows into the Clutha System 29.8% lower at 122 GWh.

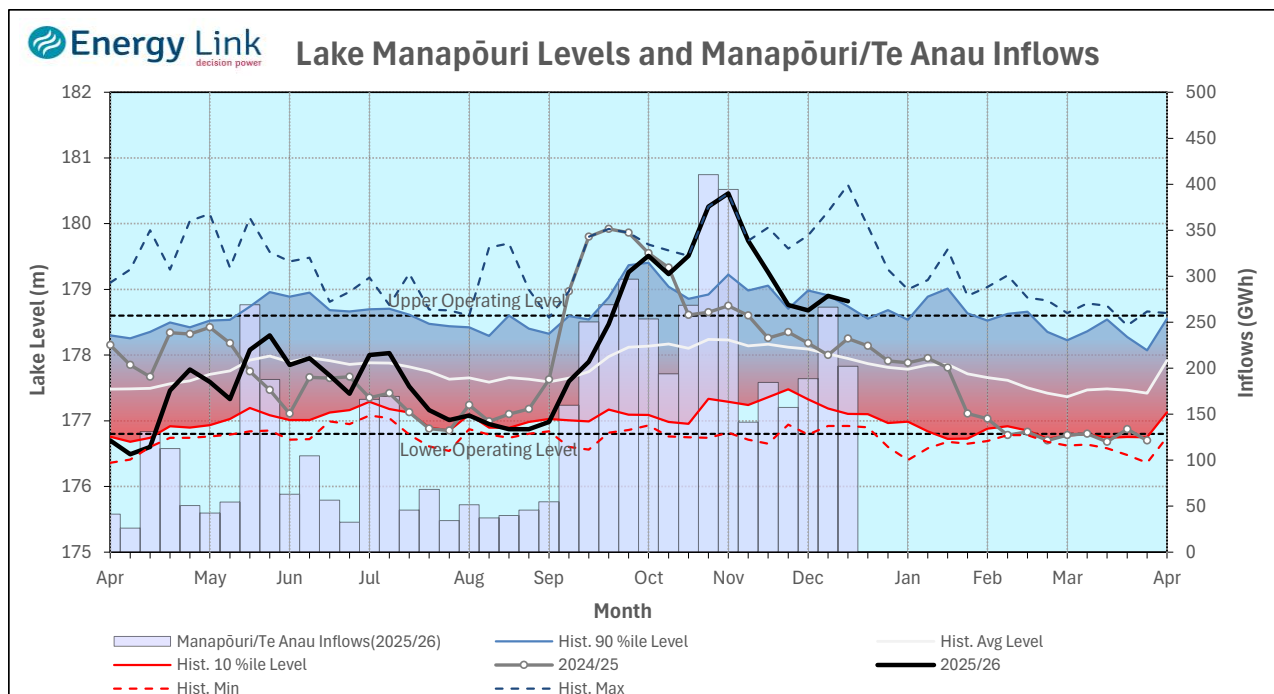
Generation - Average generation was 23.3% lower at 433 MW.

Hydro Spill - Estimate Spill is 468.6 cumecs.

River Flows - Total outflows from the lakes and Shotover River fell to 951.2 cumecs. This comprised of 117 cumecs from Lake Hāwea, 395 cumecs from Lake Wānaka, 351 cumecs from Lake Wakatipu and 88 cumecs from the Shotover River.



Manapōuri System



Lake Levels - Total storage for the Manapōuri System decreased 1.9% to 553 GWh with Lake Manapōuri ending the week 108.1% nominally full and Lake Te Anau ending the week 137% nominally full.

Inflows - Total inflows into the Manapōuri System decreased 24.1% to 202 GWh.

Generation - Average generation was remained steady at 743 MW.

Hydro Spill - Estimated spill at the Māraroa Weir was 359 cumecs.

Operating Range - Lake Manapōuri is operating in the lower end of its 'High operating range' while Lake Te Anau is operating in the middle of its 'High operating range'.

