



HydroWatch

Thursday, 28 August 2025

Issue: 1480

A weekly summary relating to New Zealand hydro storage and inflows.

Compiled by Energy Link Ltd.

Storage Summary	South Island Controlled	South Island Uncontrolled	South Island Total	North Island Taupo	Total Storage
Current Storage (GWh)	933	179	1,113	343	1,456
Storage Change (GWh)	-217	-13	-231	-39	-270

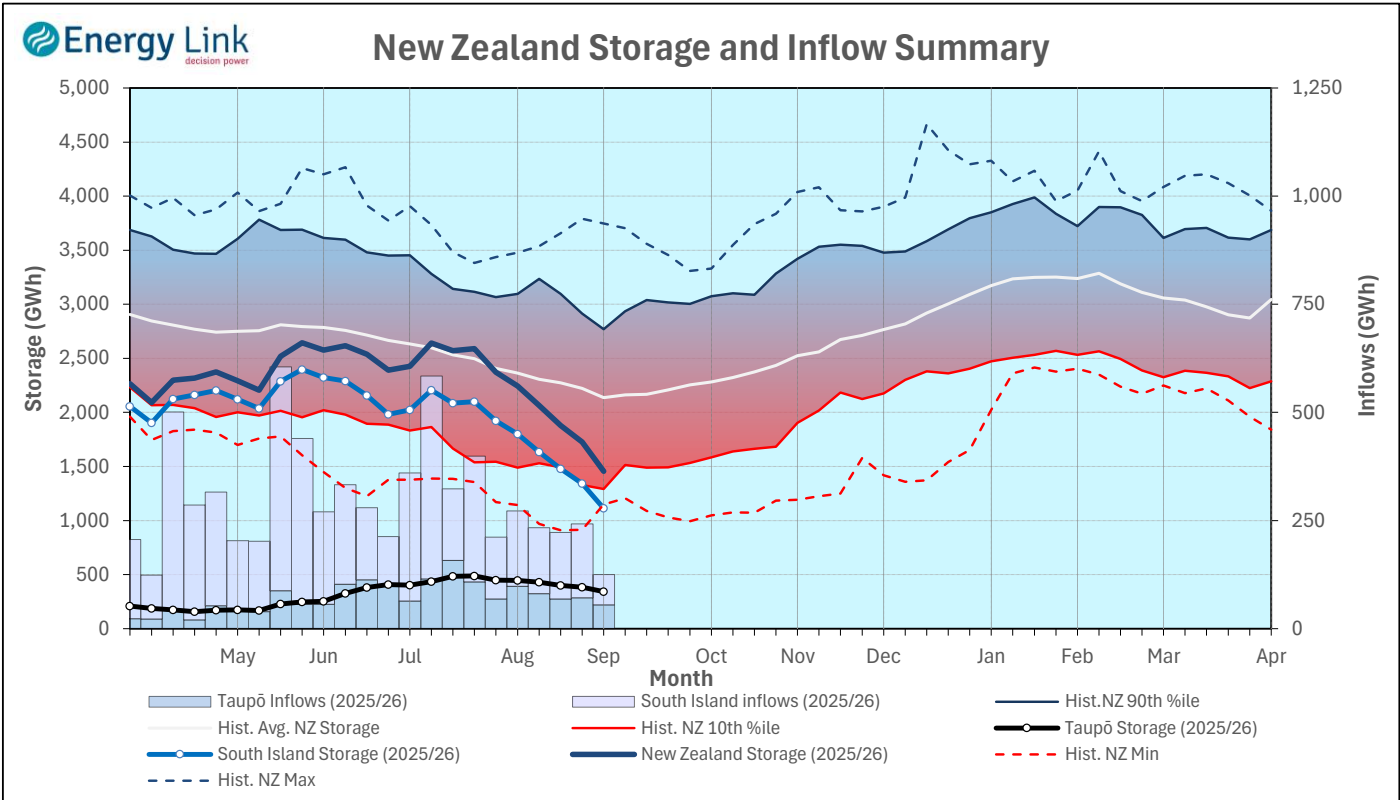
Note: SI Controlled; Takapō, Pūkaki and Hāwea; SI Uncontrolled; Manapōuri, Te Anau, Wānaka, Wakatipu

Transpower Security of Supply	South Island	North Island	New Zealand
Current Storage (GWh)	1,073	343	1,416

Note: These figures are provided to align with Transpower's Security of Supply reporting methodology. Variance from Transpower values is due to differences in generation efficiencies and contingent storage volumes.

New Zealand Summary

Total storage decreased 270 GWh over the last week. South Island controlled storage decreased 18.9% to 933 GWh; South Island uncontrolled storage decreased 7% to 179 GWh; with Taupō storage decreasing 10.2% to 343 GWh.



Thursday, 28 August 2025					
Storage (GWh)	Manapōuri	Clutha	Waitaki	Waikato	NZ
This Week	139	86	888	343	1,456
Last Week	140	115	1,088	382	1,725
% Change	-0.7%	-25.7%	-18.4%	-10.2%	-15.6%
Inflow (GWh)	Manapōuri	Clutha	Waitaki	Waikato	NZ
This Week	55	20	-4	55	125
Last Week	46	25	101	71	243
% Change	19.3%	-21.3%	-104.0%	-22.9%	-48.4%

Subscribe at www.energylink.co.nz/publications

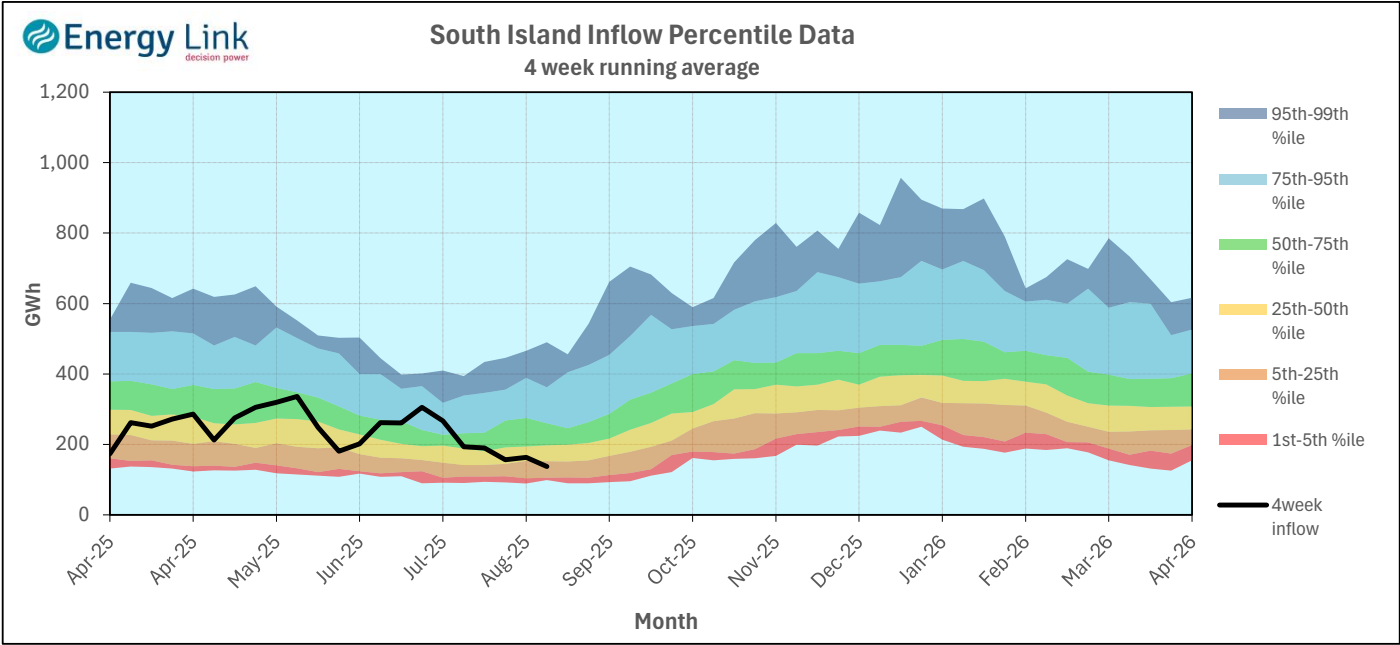
Lake Levels and Outflows

Catchment	Lake	Level (m. asl)	Storage (GWh)	Outflow (cumecs)	Outflow Change
Manapōuri	Manapōuri	176.98	66	13	0
	Te Anau	201.35	73		
Clutha	Wakatipu	309.46	15	75	-8
	Wānaka	276.57	25	109	-16
	Hāwea	339.30	46	133	-22
Waitaki	Takapō	704.28	206		
	Pūkaki	523.72	681		
Waikato	Taupō	356.69	343		

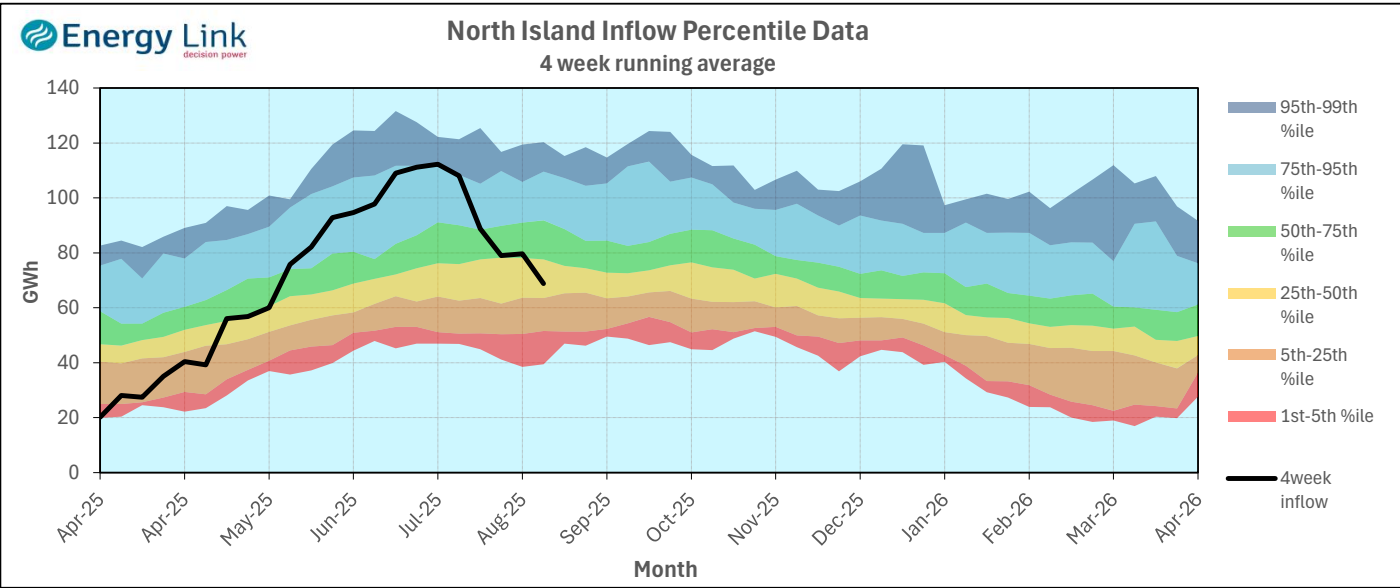
Inflow Summary

The two charts below represent where current inflows are in relation to historic inflow patterns. The percentile values have been calculated using all inflows since 1931.

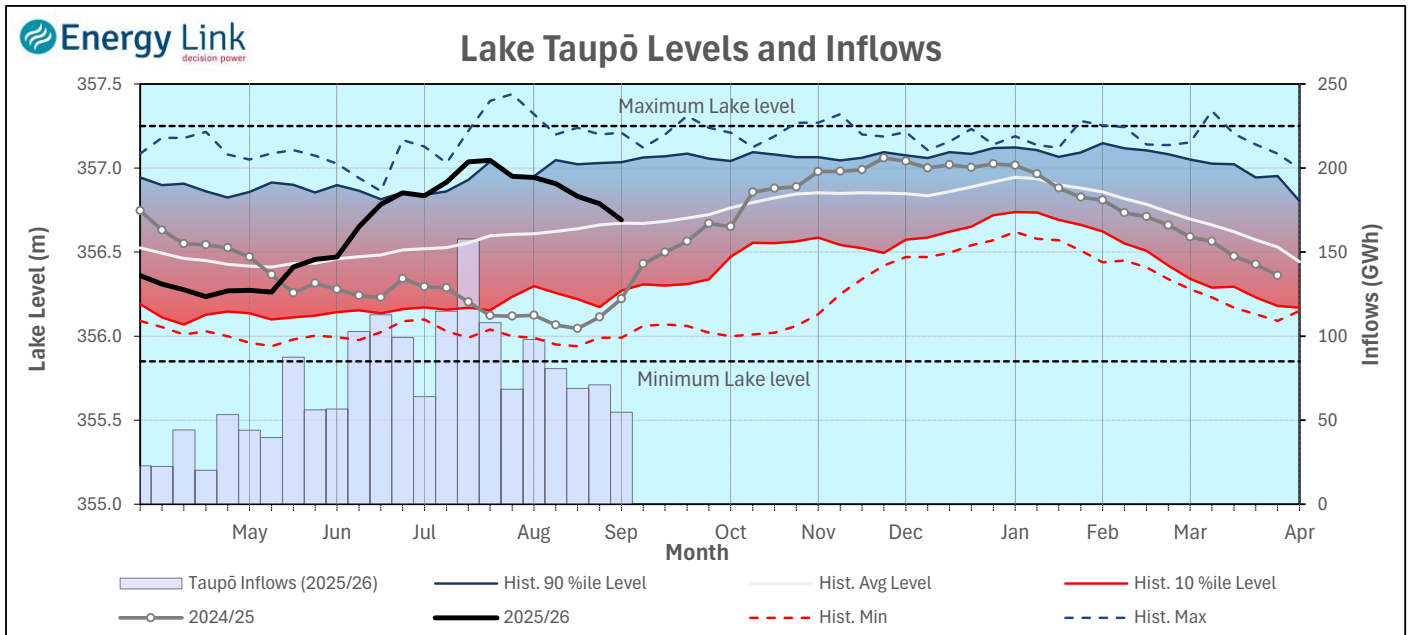
South Island Inflows - The past four weeks of S. I. inflows rank as the 19th driest on record.



North Island Inflows - The past four weeks of N. I. inflows rank as the 31st driest on record.



Waikato System

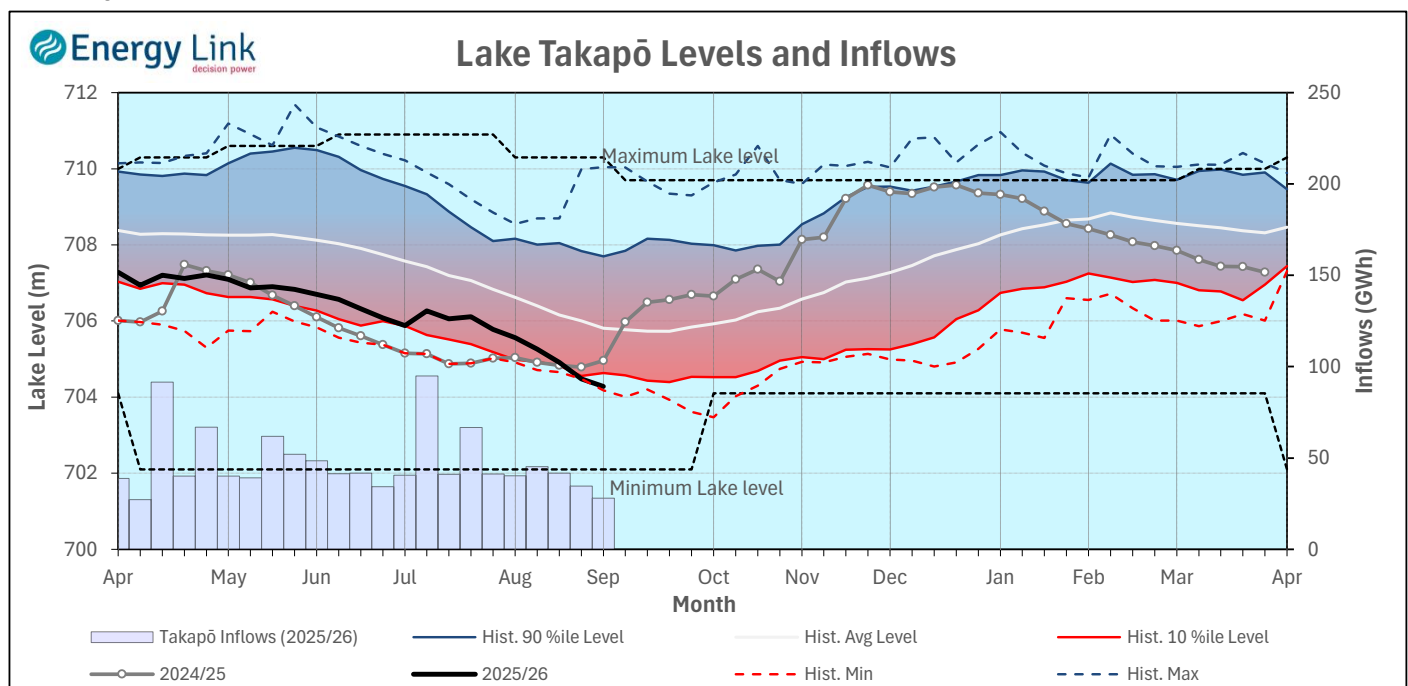


Lake Levels - Lake Taupō storage fell to 60.1% of nominal full at 343 GWh.

Inflows - Inflows decreased 22.9% to 55 GWh.

Generation - Average generation increased 2.9% to 592.9 MW.

Takapō



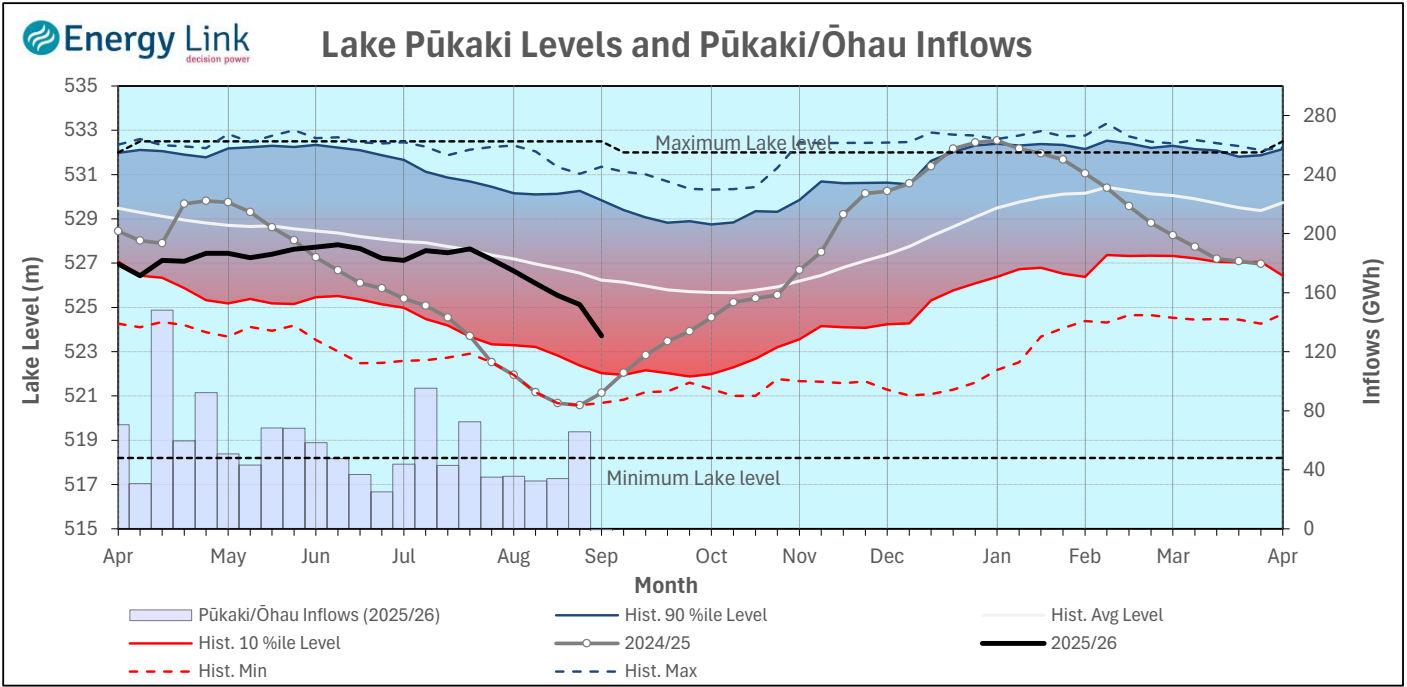
Lake Levels - Lake Takapō ended the week 26% nominally full with storage falling to 206 GWh.

Inflows - Inflows into Takapō decreased 19.4% to 28 GWh.

Generation - Average Takapō generation decreased 37.8% to 99.2 MW.

Hydro Spill - Lake Takapō did not spill.

Waitaki System



Lake Levels - Lake Pūkaki ended the week 37% nominally full with storage falling to 681 GWh.

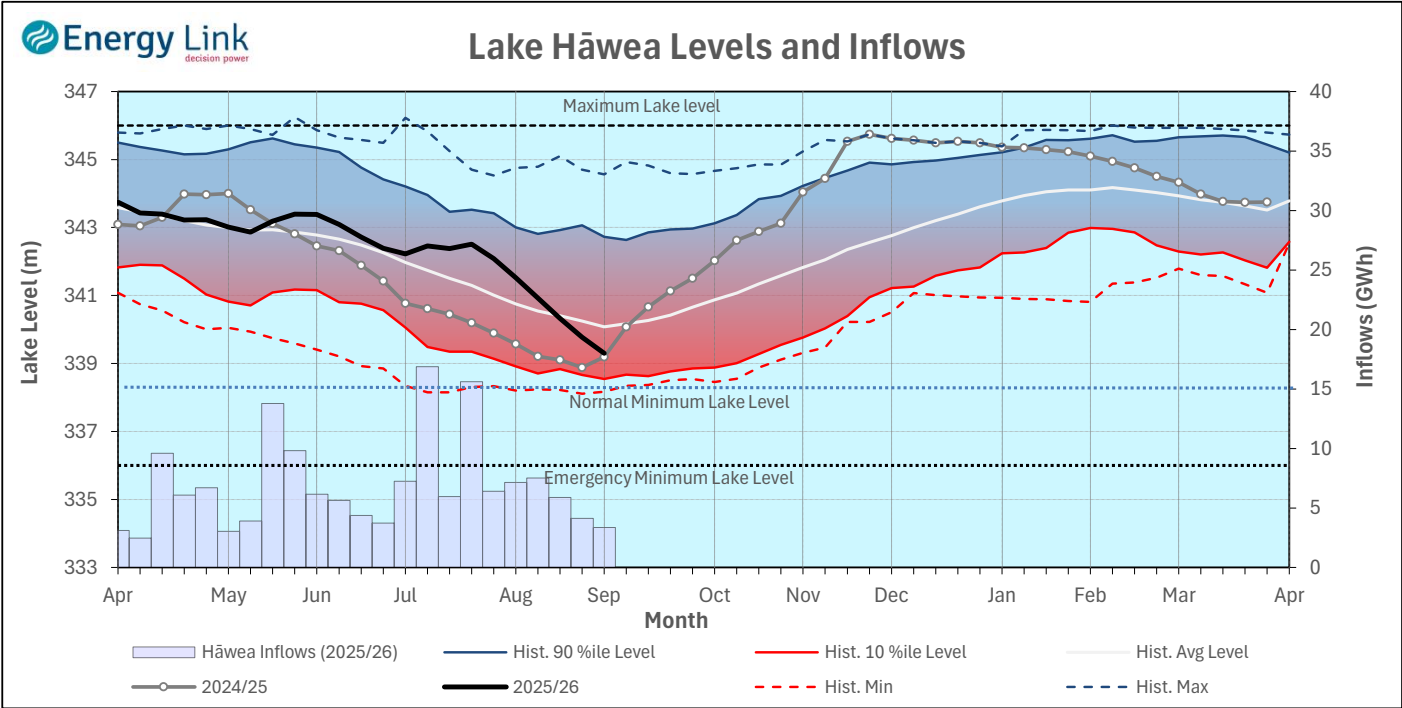
Inflows - Inflows into the Waitaki System decreased 148.5% to -32 GWh.

Generation - Average Waitaki generation increased 6.7% to 1,164 MW.

Hydro Spill - Lake Pūkaki did not spill.

River Flows - Flows from the Ahuriri River fell to 14.8 cumecs while Waitaki River flows were higher than last week averaging 477.3 cumecs.

Clutha System



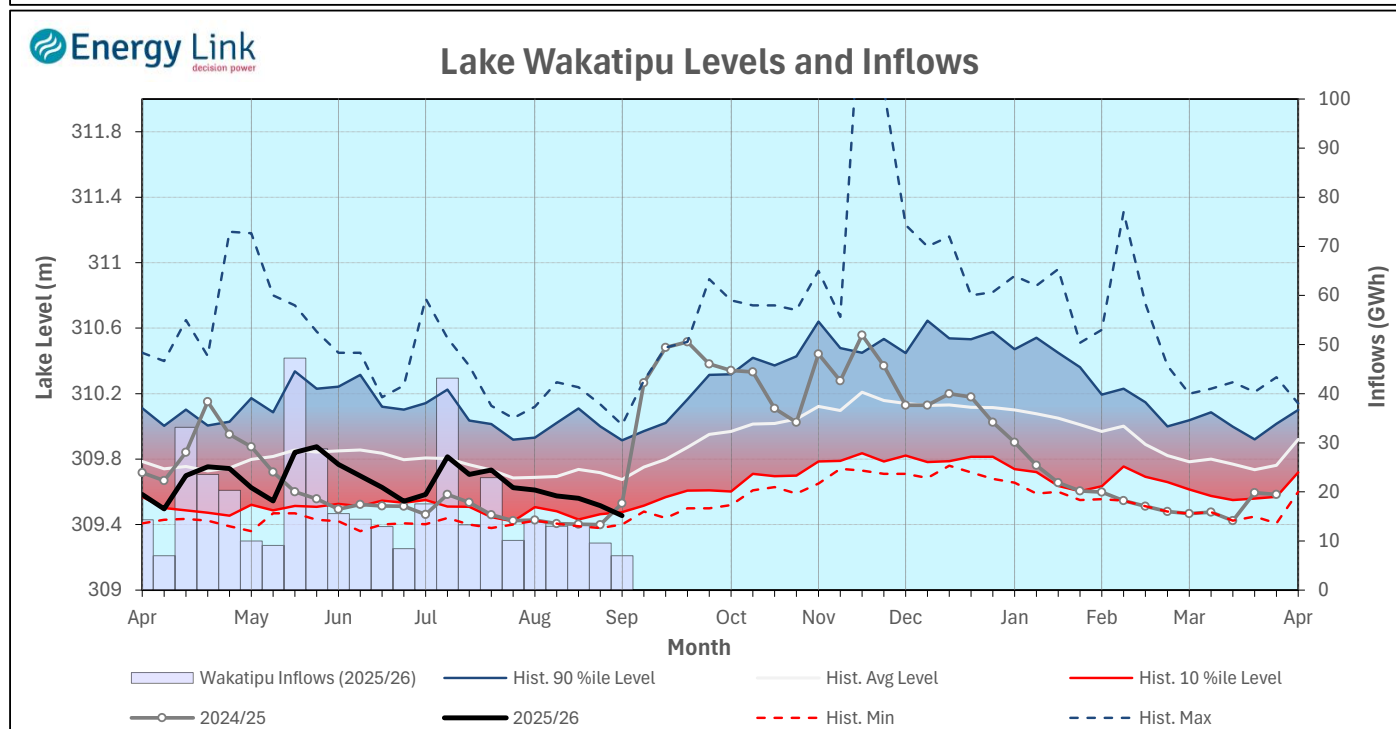
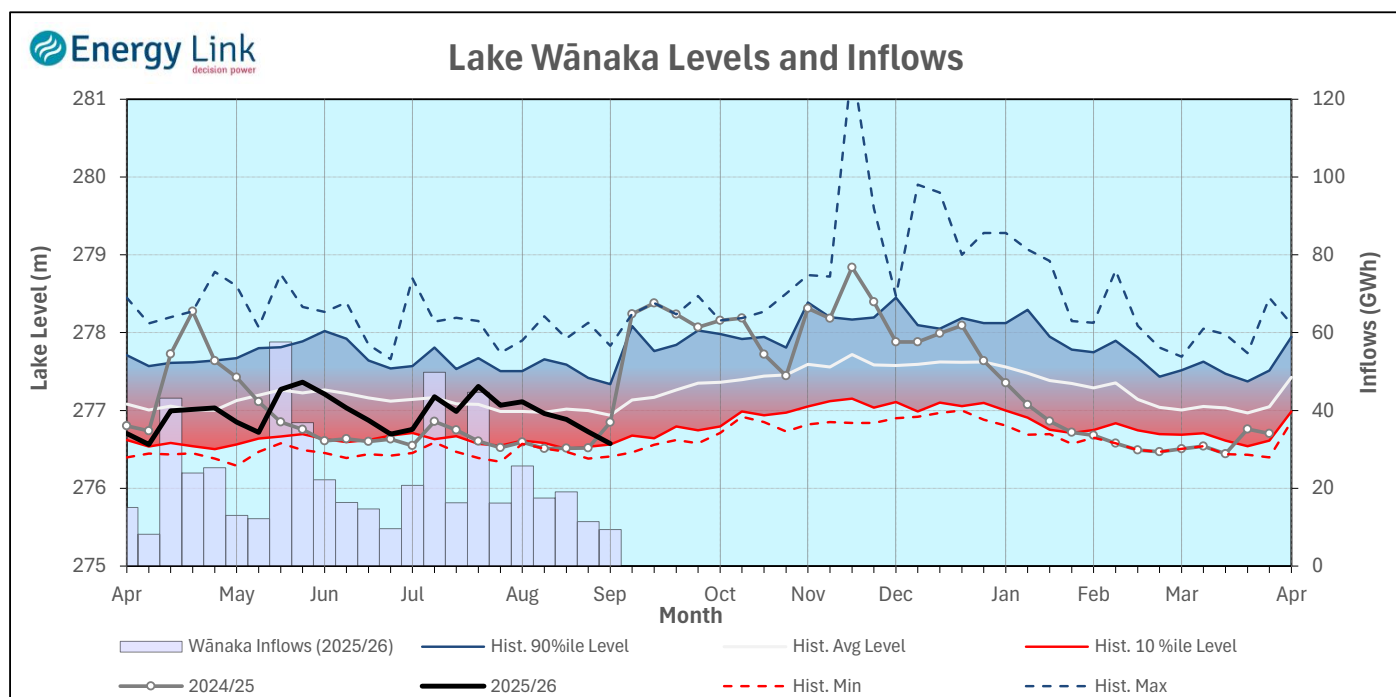
Lake Levels - Total storage for the Clutha System decreased 25.7% to 86 GWh. Lakes Hāwea, Wānaka and Wakatipu ended the week 15.5%, 21.4% and 14.6% nominally full respectively.

Inflows - Total Inflows into the Clutha System 21.3% lower at 20 GWh.

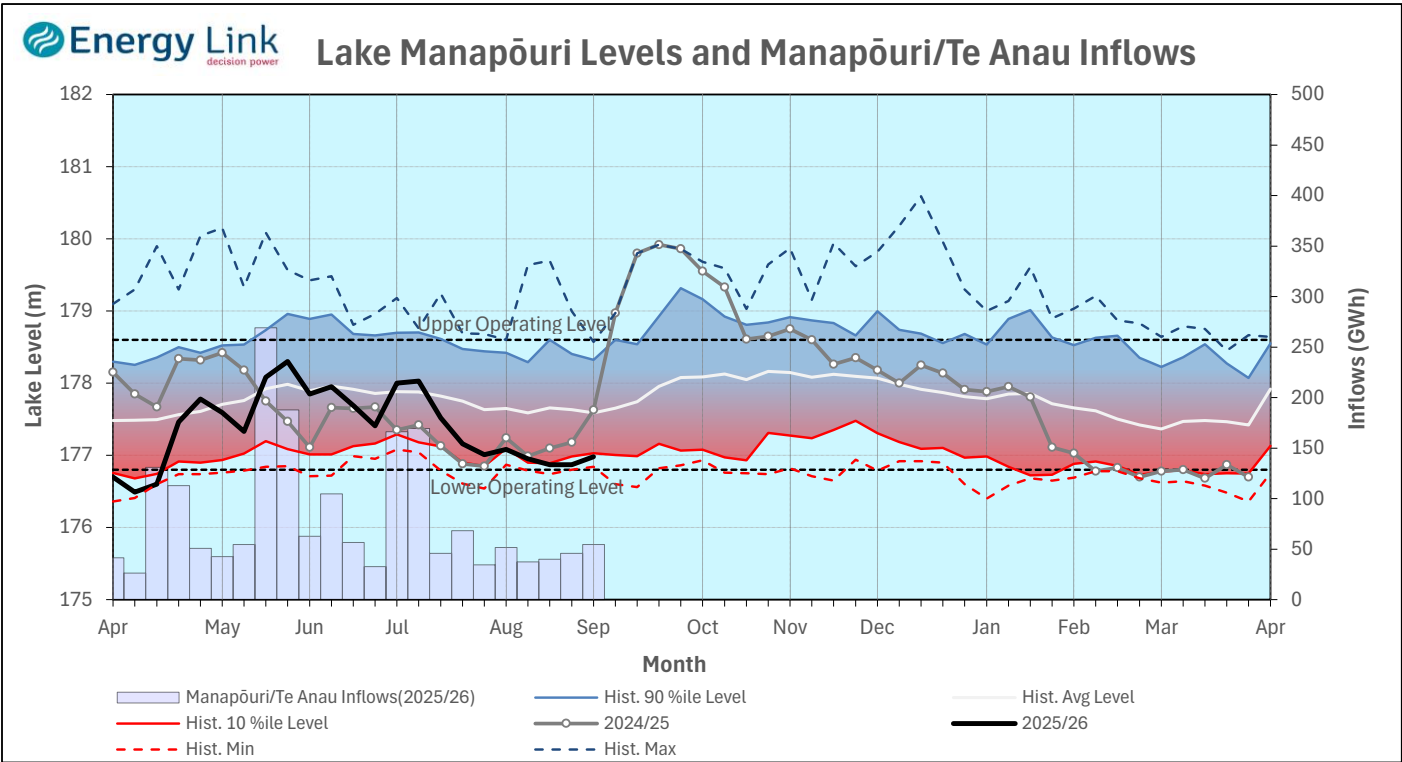
Generation - Average generation was 10.7% lower at 342 MW.

Hydro Spill - There was no estimated spill

River Flows - Total outflows from the lakes and Shotover River fell to 341.8 cumecs. This comprised of 133 cumecs from Lake Hāwea, 109 cumecs from Lake Wānaka, 75 cumecs from Lake Wakatipu and 25 cumecs from the Shotover River.



Manapōuri System



Lake Levels - Total storage for the Manapōuri System decreased 0.7% to 139 GWh with Lake Manapōuri ending the week 40.6% nominally full and Lake Te Anau ending the week 26.6% nominally full.

Inflows - Total inflows into the Manapōuri System increased 19.3% to 55 GWh.

Generation - Average generation was 1.5% higher at 331 MW.

Hydro Spill - Estimated spill at the Māraroa Weir was 12.8 cumecs.

Operating Range - Lake Manapōuri is operating in the lower end of its 'Main operating range' while Lake Te Anau is operating in the upper end of its 'Low operating range'.

