

# HydroWatch

**Thursday, 17 July 2025**
**Issue: 1474**
*A weekly summary relating to New Zealand hydro storage and inflows.*
**Compiled by Energy Link Ltd.**

Storage Summary	South Island Controlled	South Island Uncontrolled	South Island Total	North Island Taupo	Total Storage
Current Storage (GWh)	1,742	358	2,101	488	2,588
Storage Change (GWh)	33	-18	14	4	18

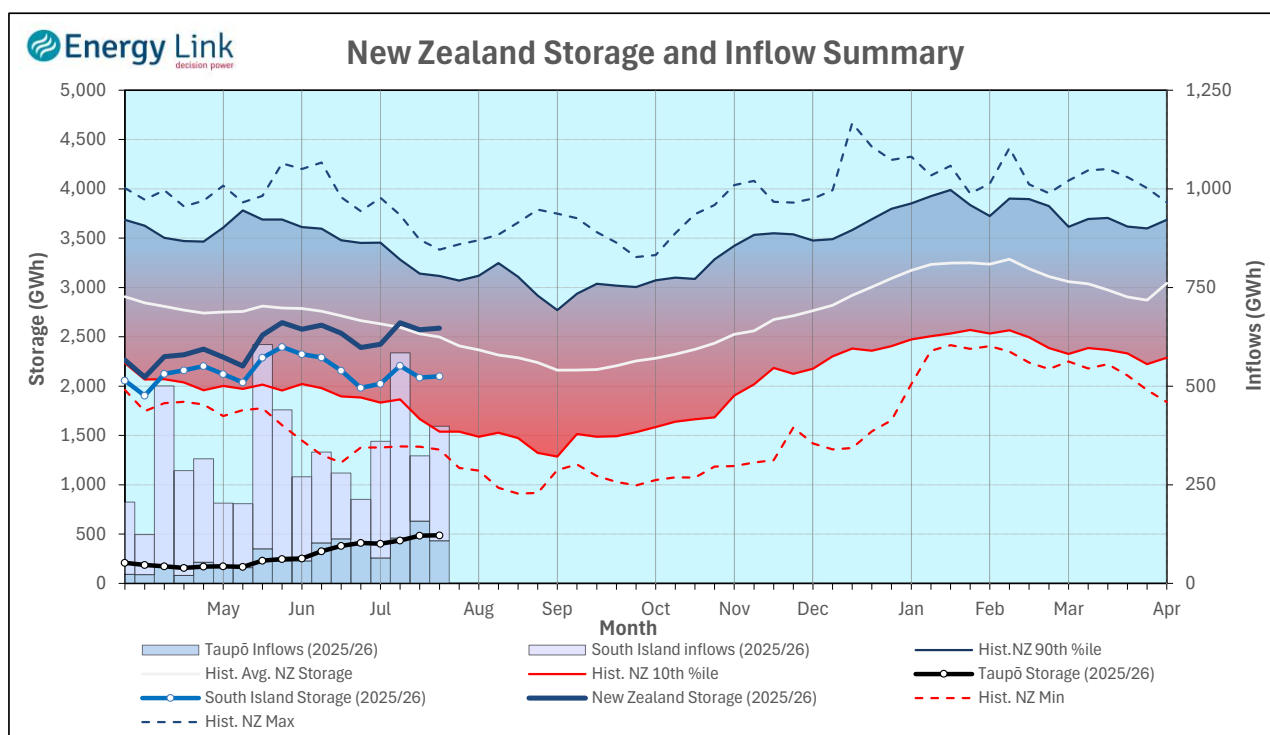
Note: SI Controlled; Takapō, Pūkaki and Hāwea: SI Uncontrolled; Manapōuri, Te Anau, Wānaka, Wakatipu

Transpower Security of Supply	South Island	North Island	New Zealand
Current Storage (GWh)	2,003	488	2,491

Note: These figures are provided to align with Transpower's Security of Supply reporting methodology. Variance from Transpower values is due to differences in generation efficiencies and contingent storage volumes.

**New Zealand Summary**

Total storage increased 18 GWh over the last week. South Island controlled storage increased 1.9% to 1,742 GWh; South Island uncontrolled storage decreased 5% to 358 GWh; with Taupō storage increasing 0.8% to 488 GWh.



Thursday, 17 July 2025					
Storage (GWh)	Manapōuri	Clutha	Waitaki	Waikato	NZ
<b>This Week</b>	261	262	1,578	488	2,588
Last Week	297	239	1,551	484	2,570
% Change	-12.2%	9.5%	1.8%	0.8%	0.7%
Inflow (GWh)	Manapōuri	Clutha	Waitaki	Waikato	NZ
<b>This Week</b>	68	83	139	108	399
Last Week	46	36	84	158	323
% Change	49.1%	134.3%	65.9%	-31.6%	23.4%

Subscribe at [www.energylink.co.nz/publications](http://www.energylink.co.nz/publications)

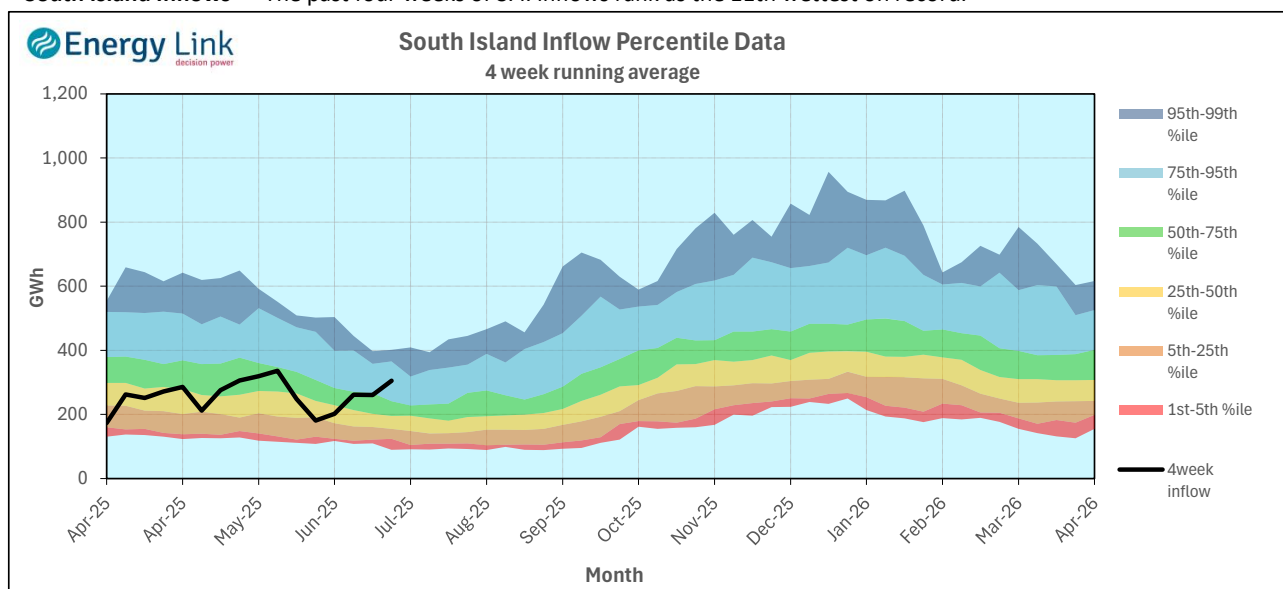
## Lake Levels and Outflows

Catchment	Lake	Level (m. asl)	Storage (GWh)	Outflow (cumecs)	Outflow Change
Manapōuri	Manapōuri	177.16	77	13	0
	Te Anau	202.09	184		
Clutha	Wakatipu	309.73	37	133	-5
	Wānaka	277.31	61	184	19
	Hāwea	342.51	164	70	13
Waitaki	Takapō	706.11	389		
	Pūkaki	527.64	1,190		
Waikato	Taupō	357.05	488		

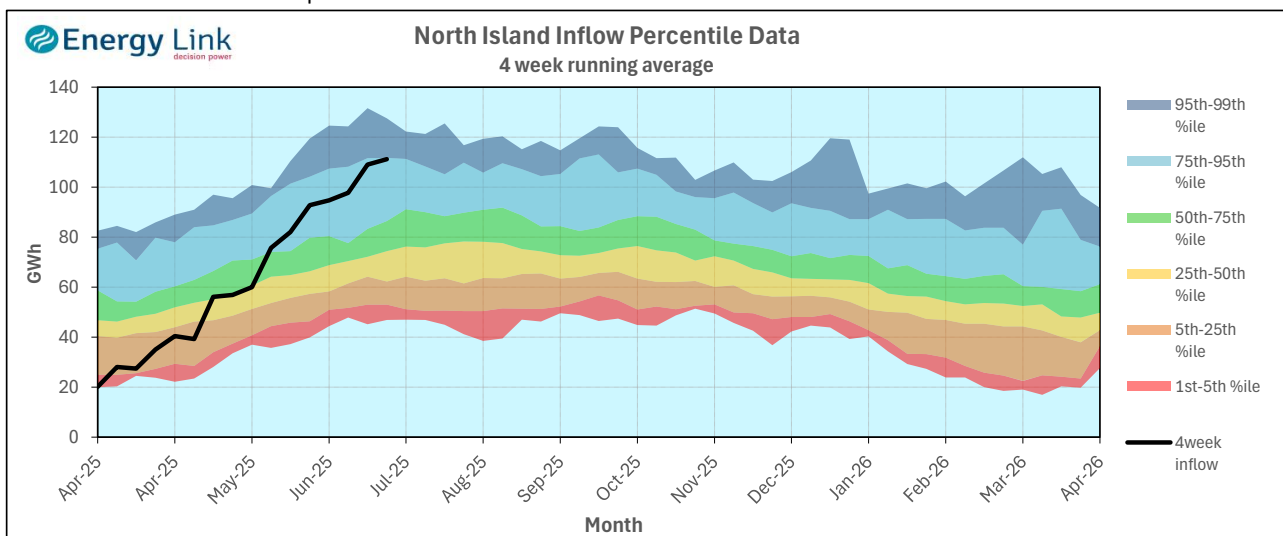
## Inflow Summary

The two charts below represent where current inflows are in relation to historic inflow patterns. The percentile values have been calculated using all inflows since 1931.

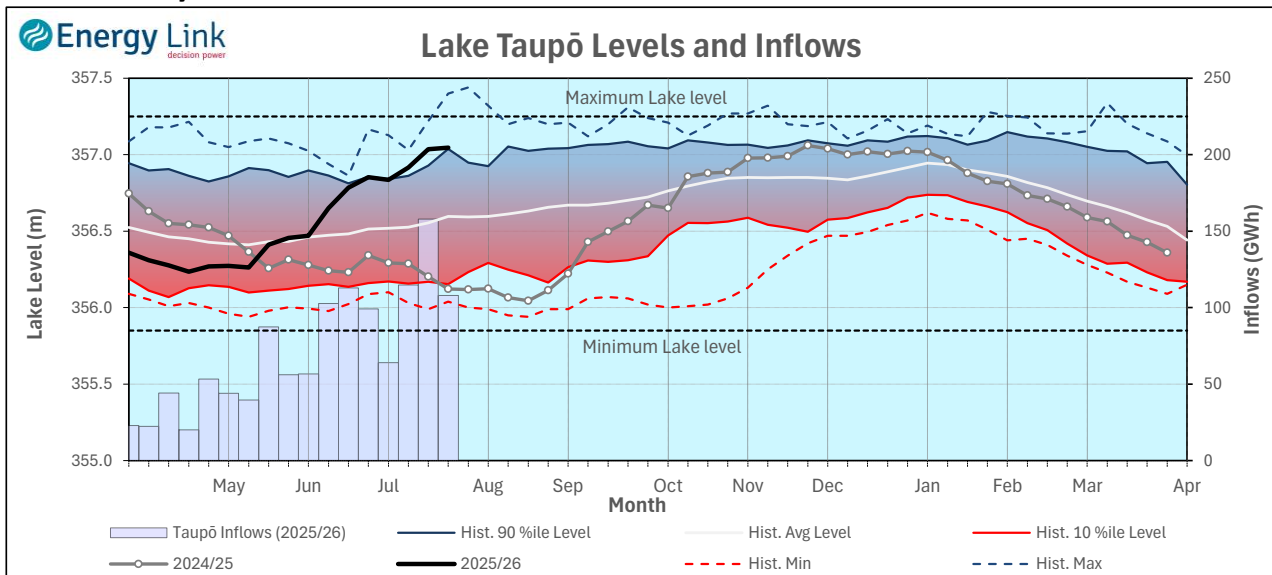
**South Island Inflows -** The past four weeks of S. I. inflows rank as the 11th wettest on record.



**North Island Inflows -** The past four weeks of N. I. inflows rank as the 7th wettest on record.



## Waikato System

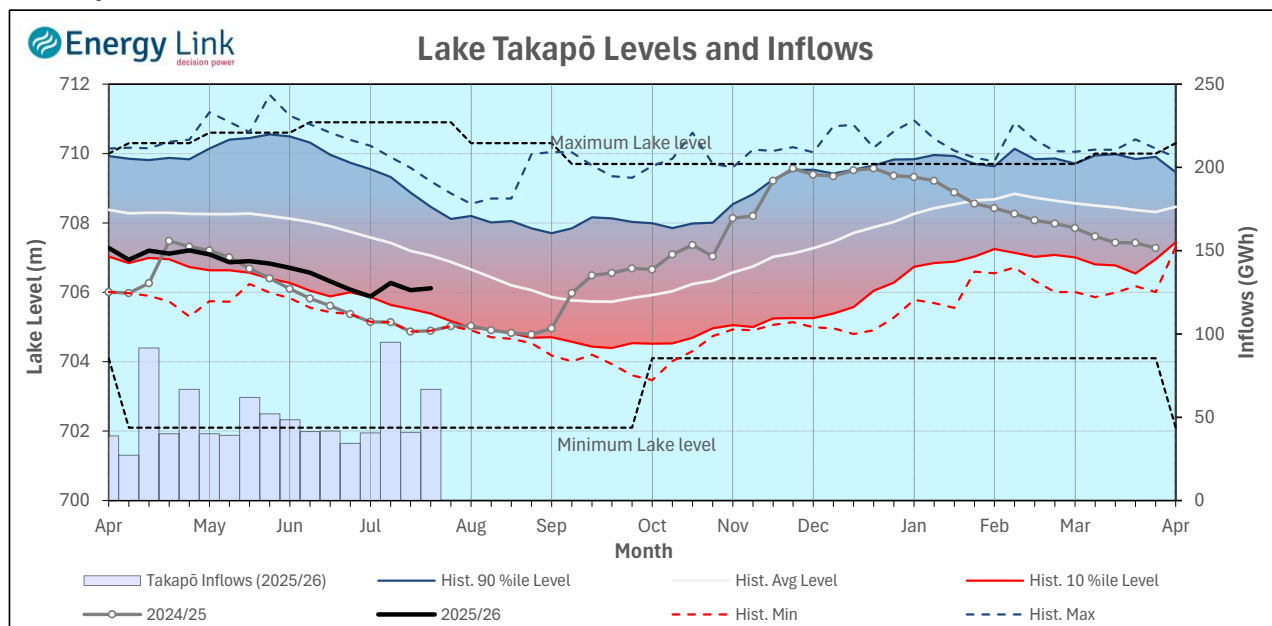


**Lake Levels** - Lake Taupō storage increased to 85.4% of nominal full at 488 GWh.

**Inflows** - Inflows decreased 31.6% to 108 GWh.

**Generation** - Average generation increased 7.5% to 664.2 MW.

## Takapō



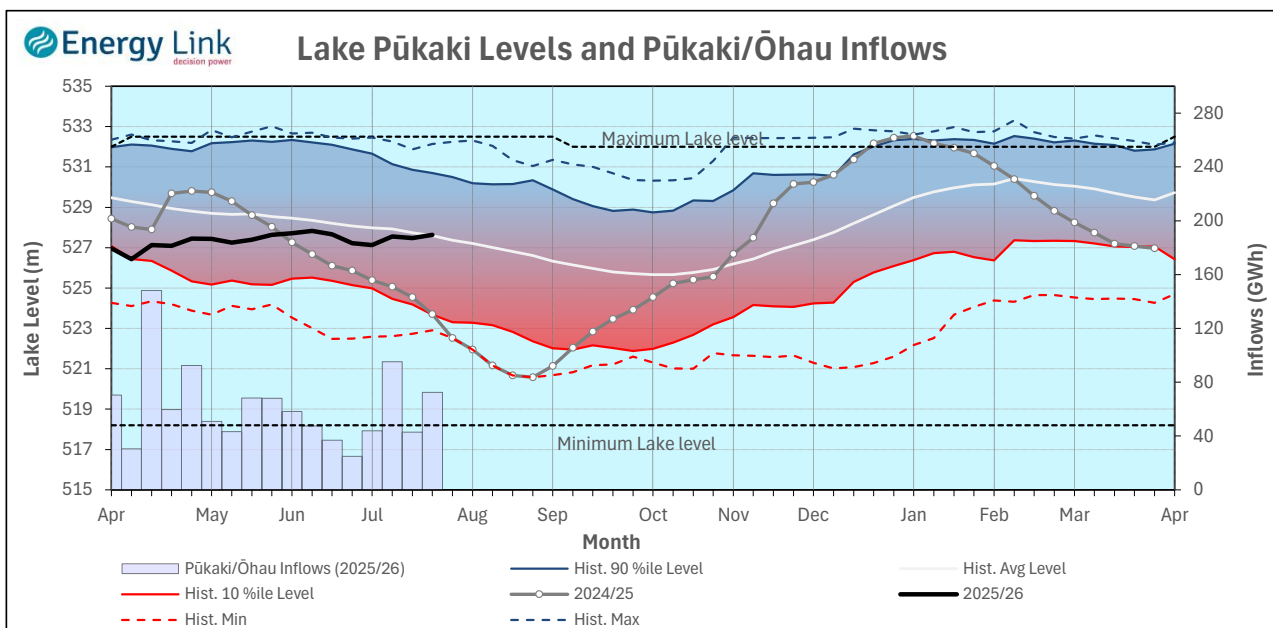
**Lake Levels** - Lake Takapō ended the week 46% nominally full with storage increasing to 389 GWh.

**Inflows** - Inflows into Takapō increased 62.6% to 67 GWh.

**Generation** - Average Takapō generation decreased 0.7% to 127 MW.

**Hydro Spill** - Lake Takapō did not spill.

## Waitaki System



**Lake Levels -** Lake Pūkaki ended the week 64% nominally full with storage increasing to 1,190 GWh.

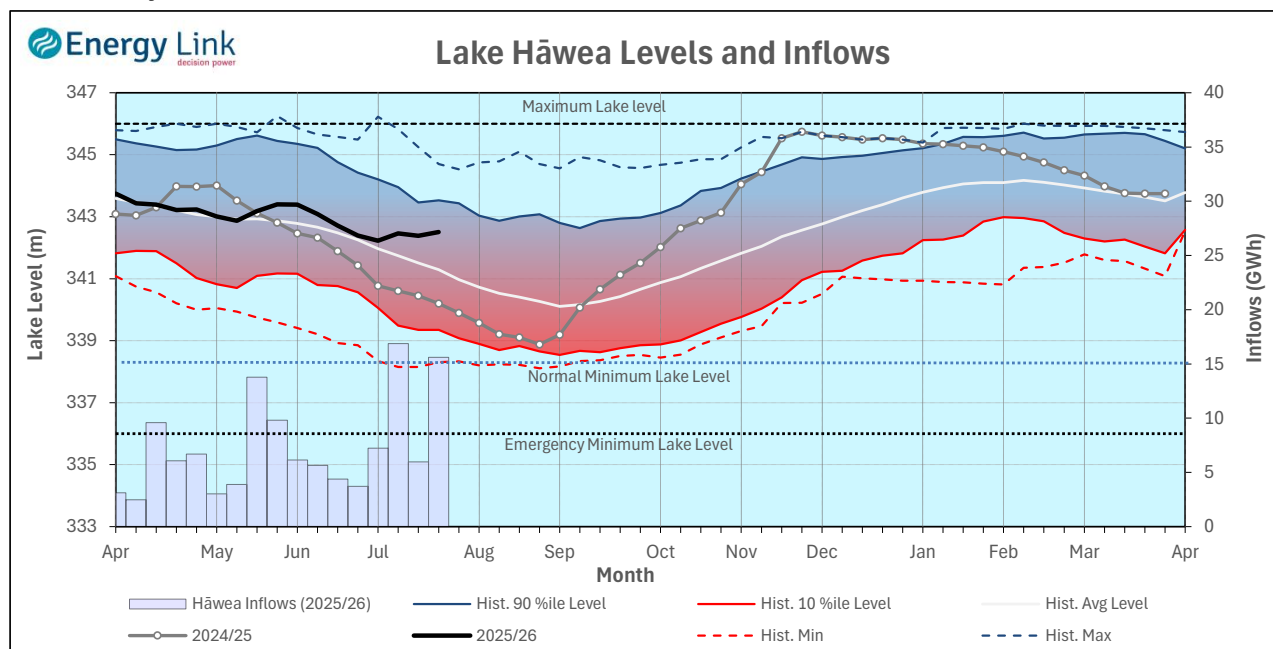
**Inflows -** Inflows into the Waitaki System increased 68.9% to 72 GWh.

**Generation -** Average Waitaki generation decreased 6.4% to 649 MW.

**Hydro Spill -** Lake Pūkaki did not spill.

**River Flows -** Flows from the Ahuriri River increased to 37.5 cumecs while Waitaki River flows were lower than last week averaging 298.8 cumecs.

## Clutha System



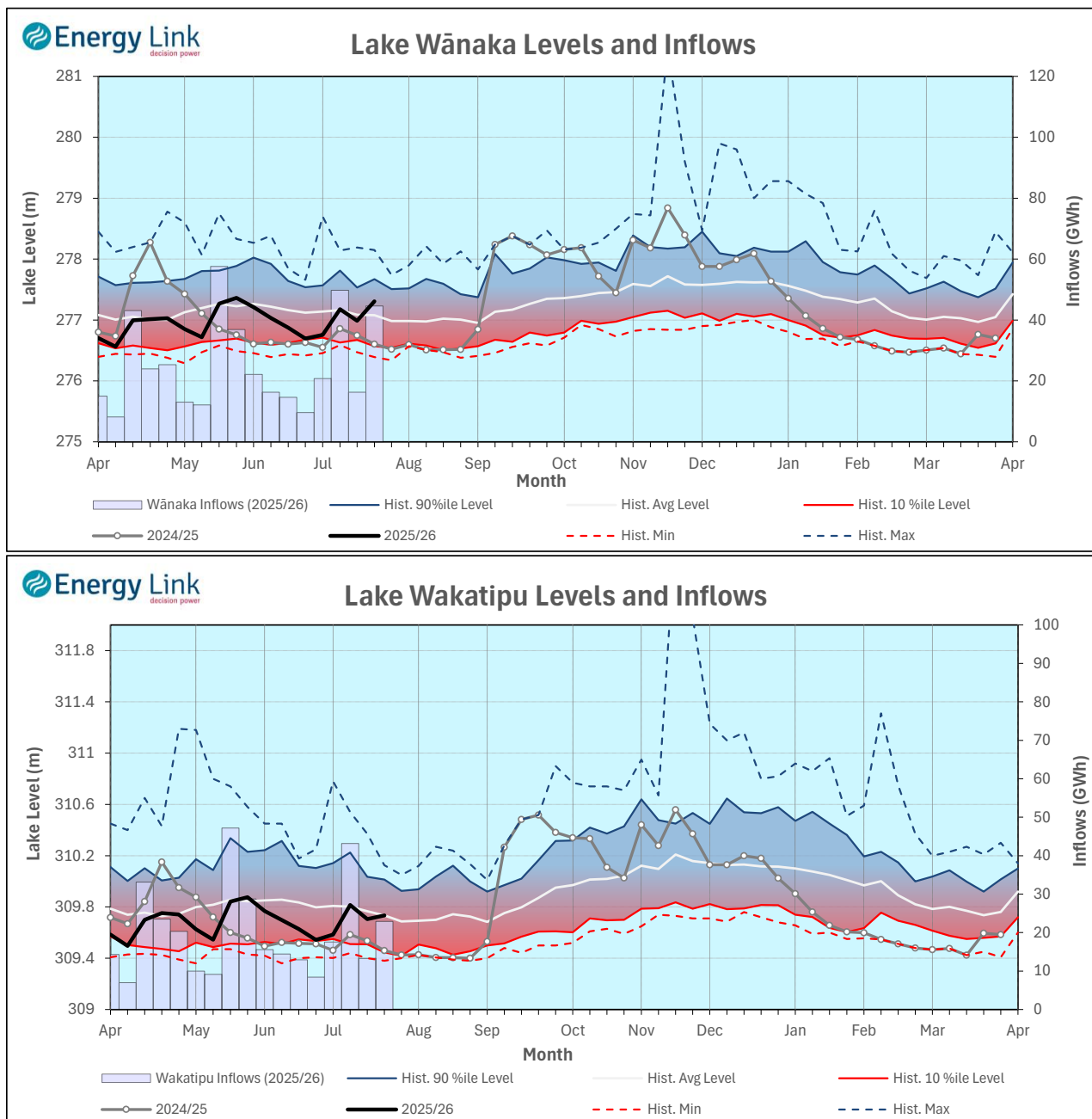
**Lake Levels** - Total storage for the Clutha System increased by 9.5% to 262 GWh. Lakes Hāwea, Wānaka and Wakatipu ended the week 55.5%, 53.3% and 34.6% nominally full respectively.

**Inflows** - Total Inflows into the Clutha System 134.3% higher at 83 GWh.

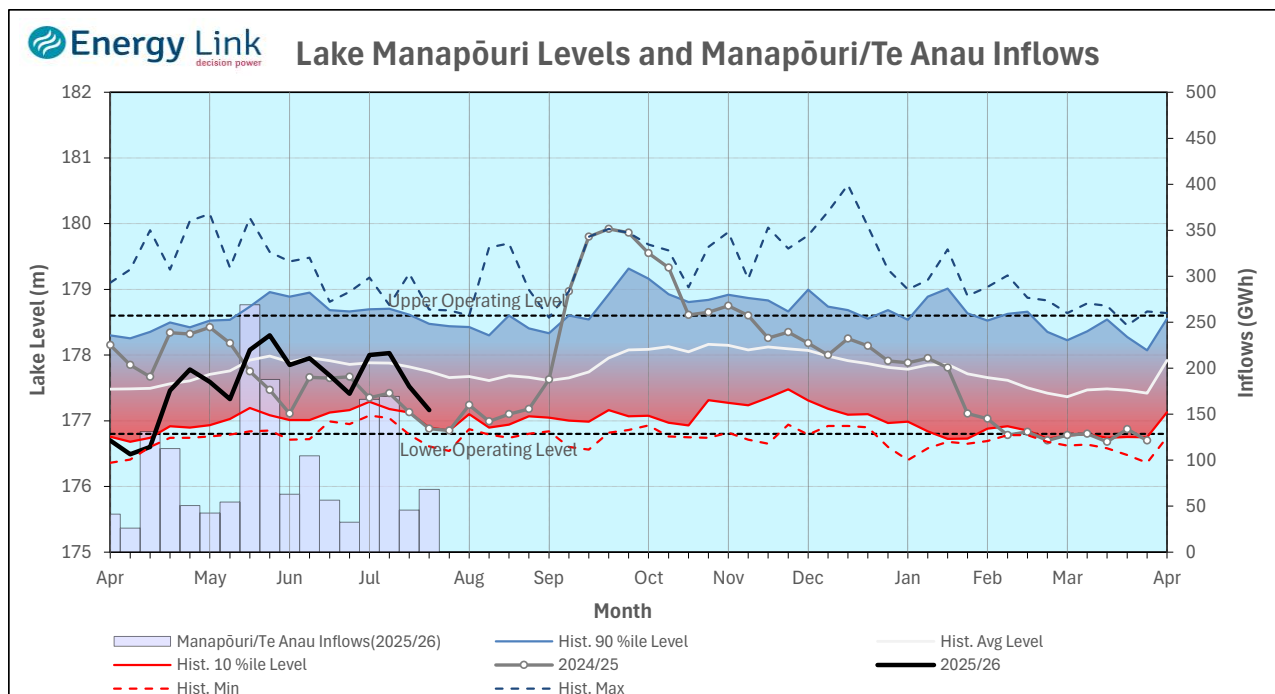
**Generation** - Average generation was 8.3% higher at 430 MW.

**Hydro Spill** - There was no estimated spill

**River Flows** - Total outflows from the lakes and Shotover River increased to 434.4 cumecs. This comprised of 70 cumecs from Lake Hāwea, 184 cumecs from Lake Wānaka, 133 cumecs from Lake Wakatipu and 47 cumecs from the Shotover River.



## Manapōuri System



**Lake Levels** - Total storage for the Manapōuri System decreased 12.2% to 261 GWh with Lake Manapōuri ending the week 47.1% nominally full and Lake Te Anau ending the week 66.8% nominally full.

**Inflows** - Total inflows into the Manapōuri System increased 49.1% to 68 GWh.

**Generation** - Average generation was 6.7% lower at 622 MW.

**Hydro Spill** - Estimated spill at the Māraroa Weir was 12.9 cumecs.

**Operating Range** - Lake Manapōuri is operating in the lower end of its 'Main operating range' while Lake Te Anau is operating in the middle of its 'Main operating range'.

