

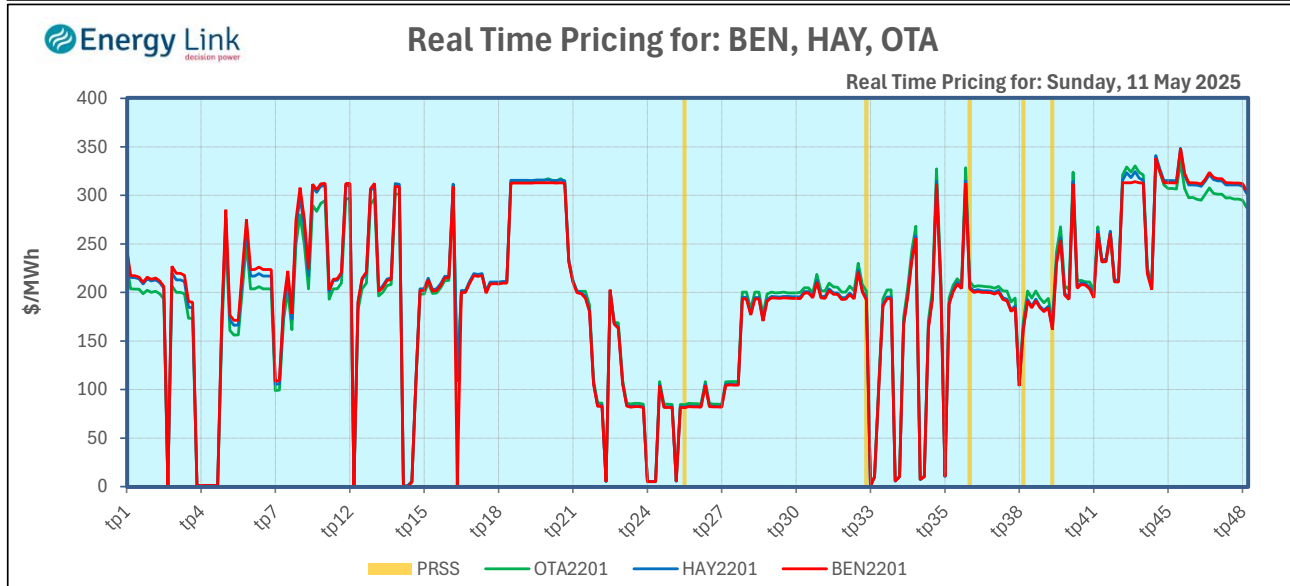
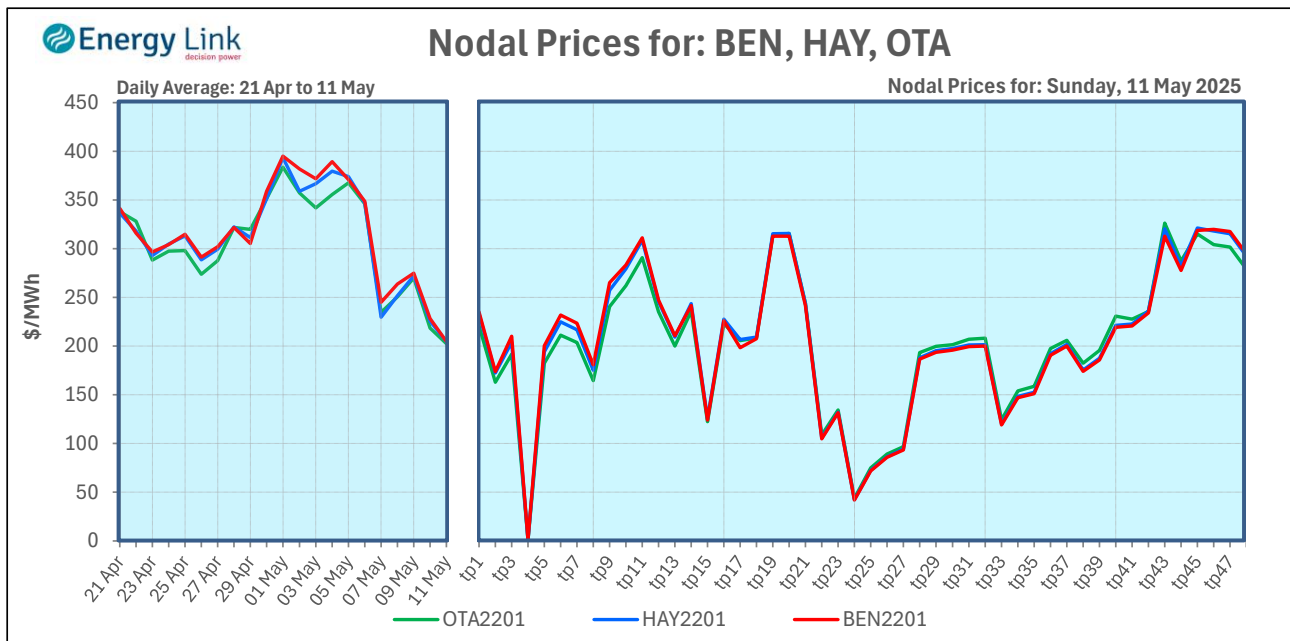


Sunday, 11 May 2025

Price Status - Final

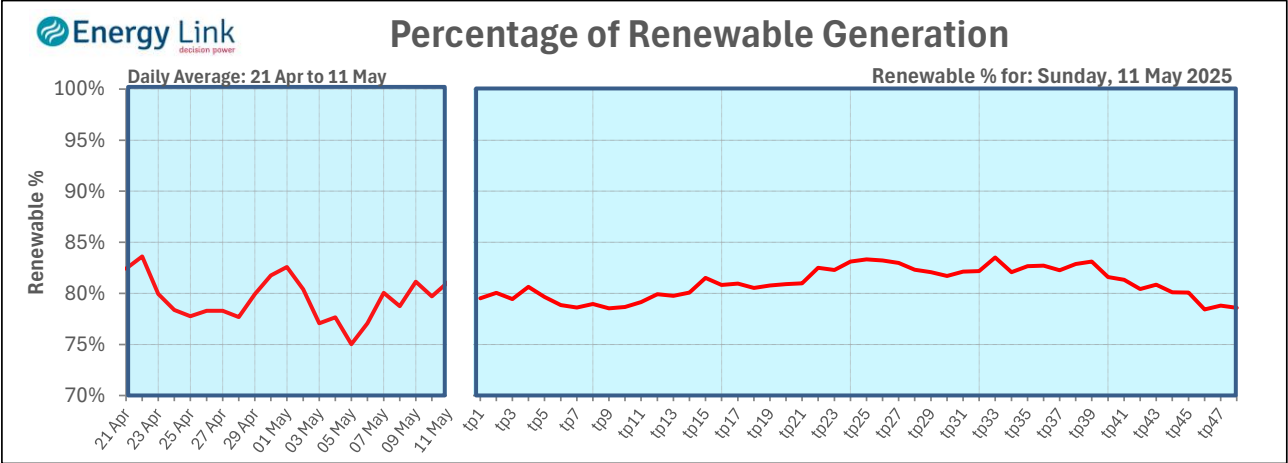
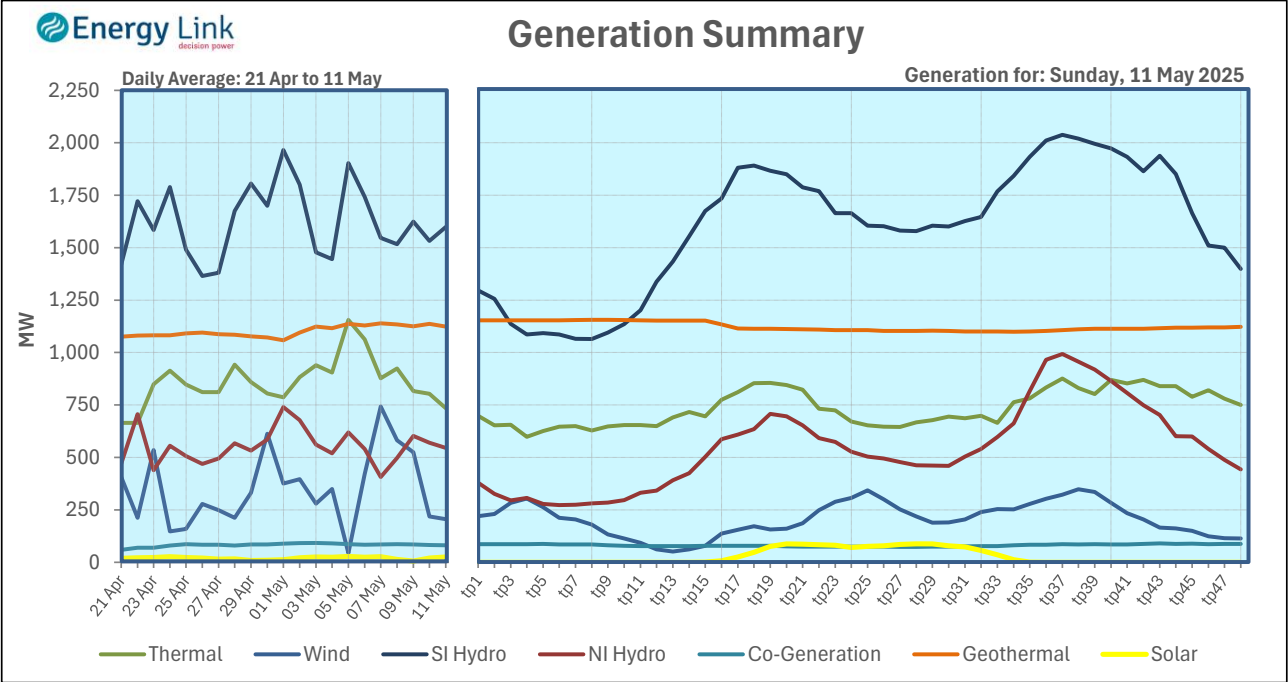
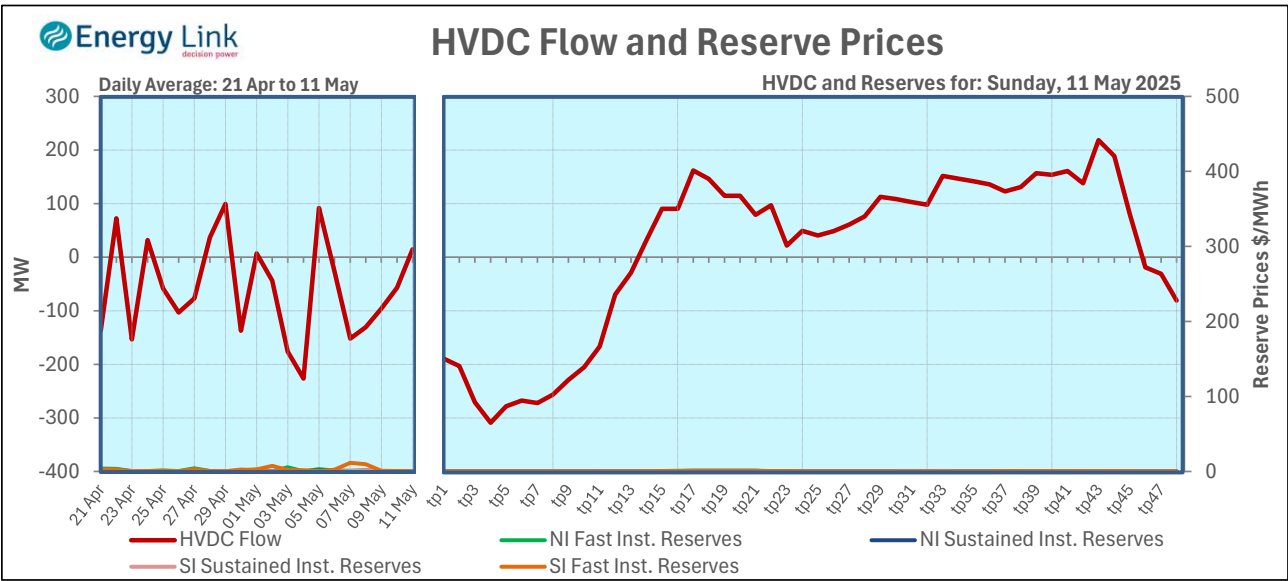
Node:	Month-to-date	7-day Avg	Daily Avg
Benmore	\$315.91	\$276.68	\$204.80
Haywards	\$309.42	\$272.14	\$204.90
Ōtāhuhu	\$302.59	\$269.98	\$202.50

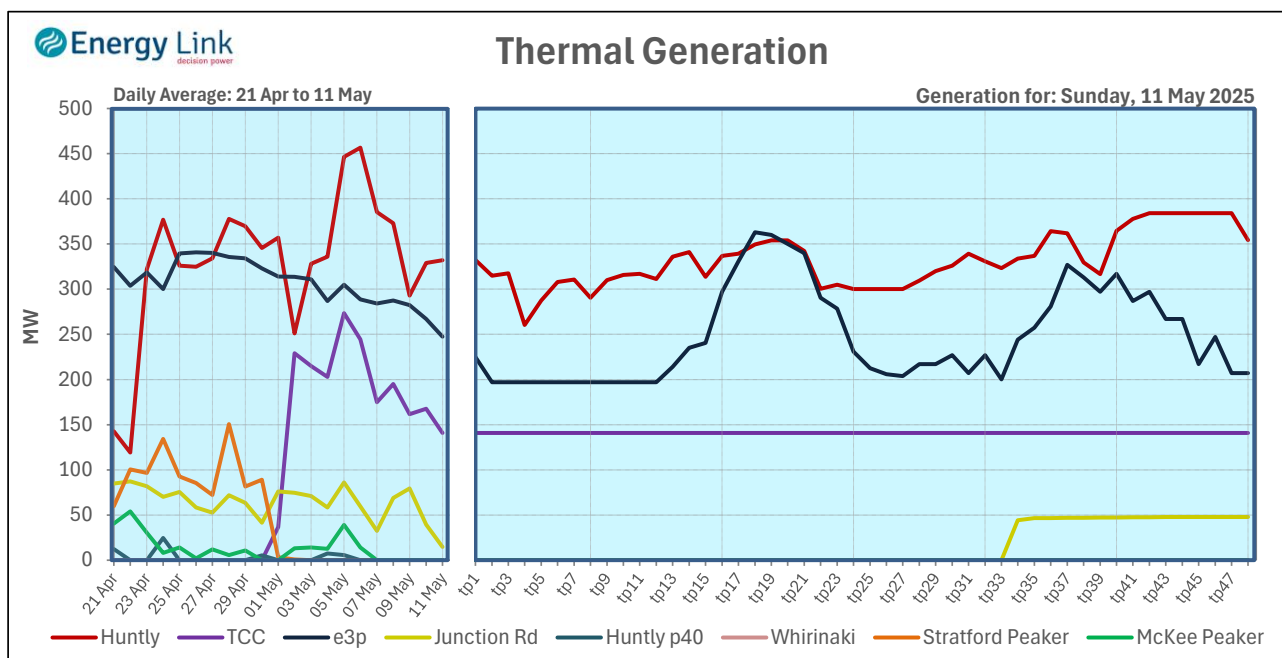
Day	Night	Price Range
\$201.85	\$213.66	\$1.15 - \$319.94
\$203.39	\$209.42	\$1.12 - \$321.30
\$204.25	\$197.28	\$1.05 - \$326.23



Note: For the purposes of this chart, PRSS indicates periods where PRSS was used.

Subscribe at <https://energylink.co.nz/resources>

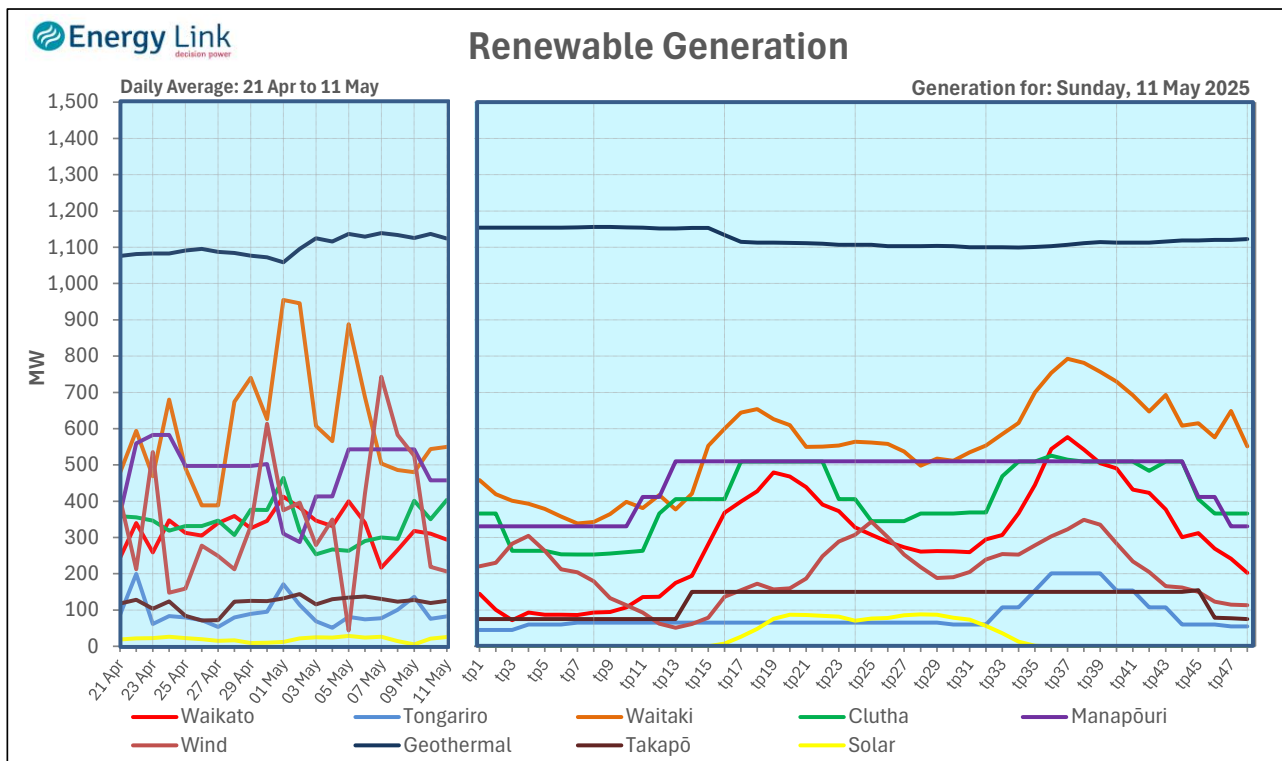




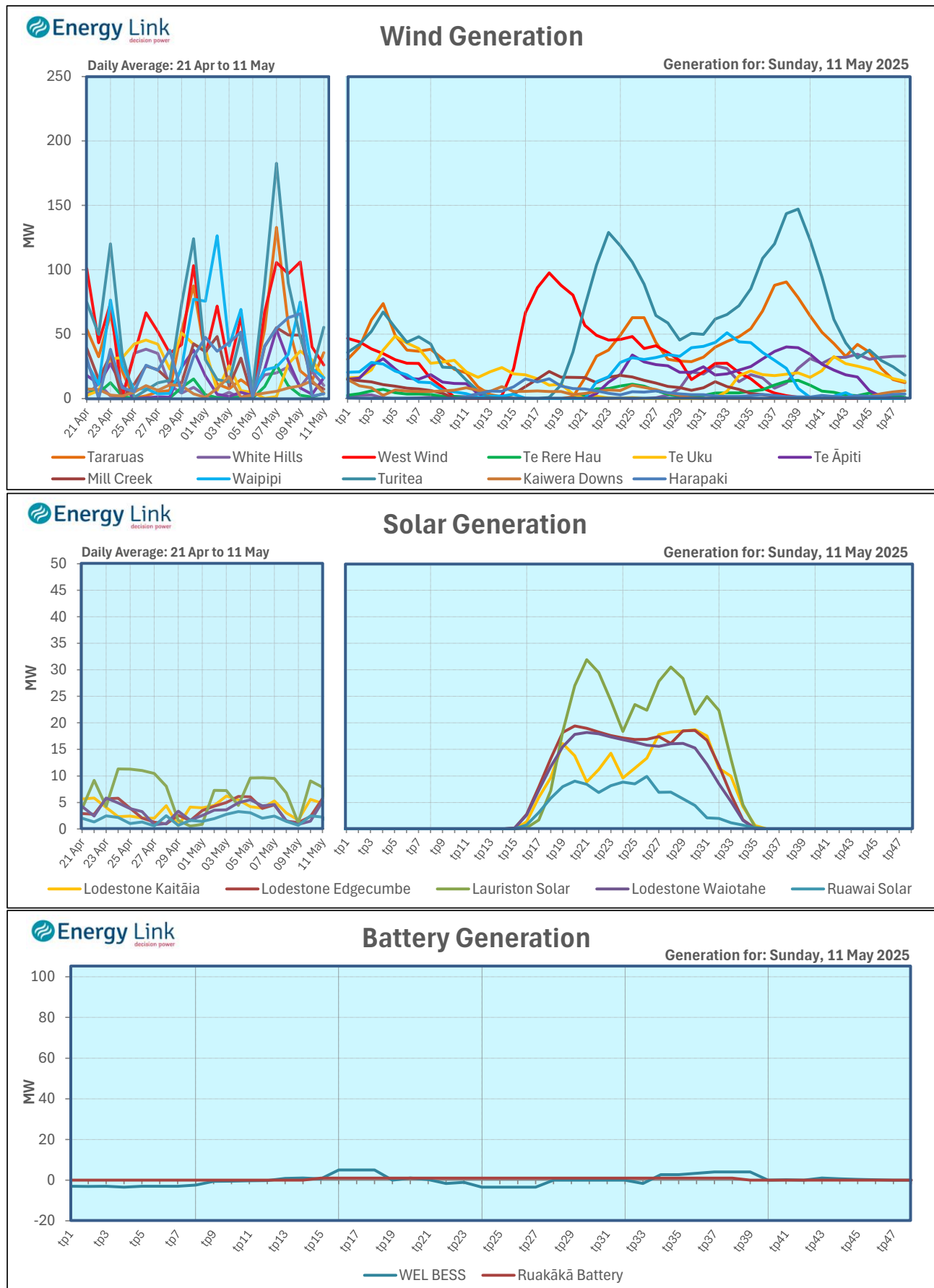
Station	Ave MW	Range (MW)
Huntly	332	260 - 384
TCC	141	141 - 141
e3p	247	197 - 363
Huntly p40	0	0 - 0
Whirinaki	0	0 - 0
Stratford Peaker	0	0 - 0
McKee Peaker	0	0 - 0
Junction Rd	15	0 - 48

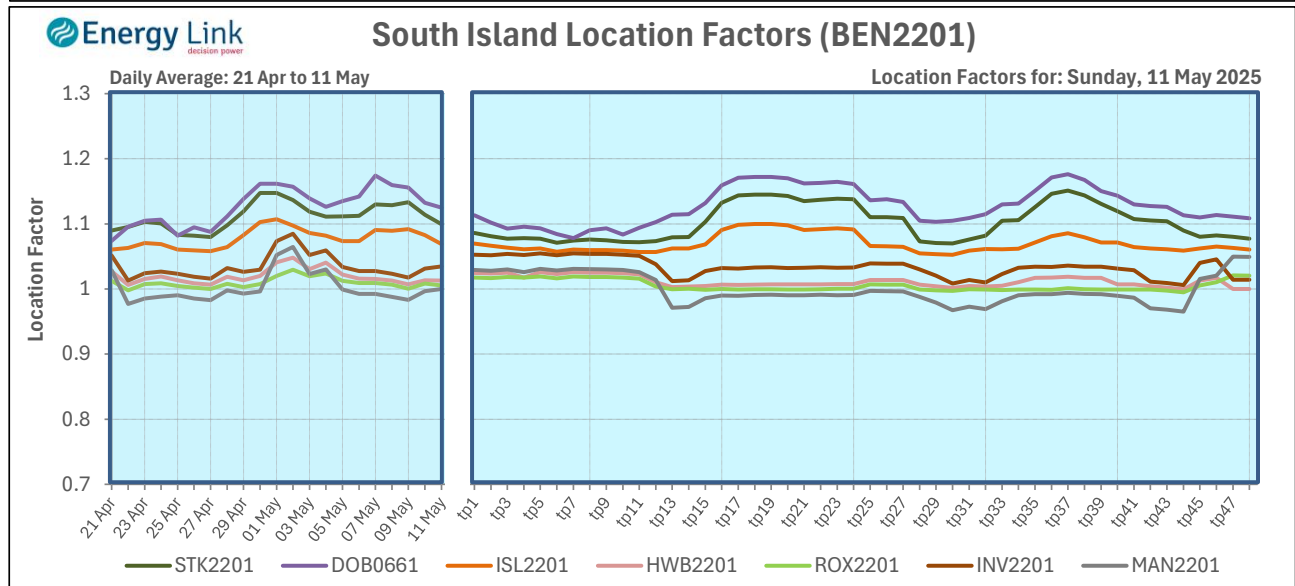
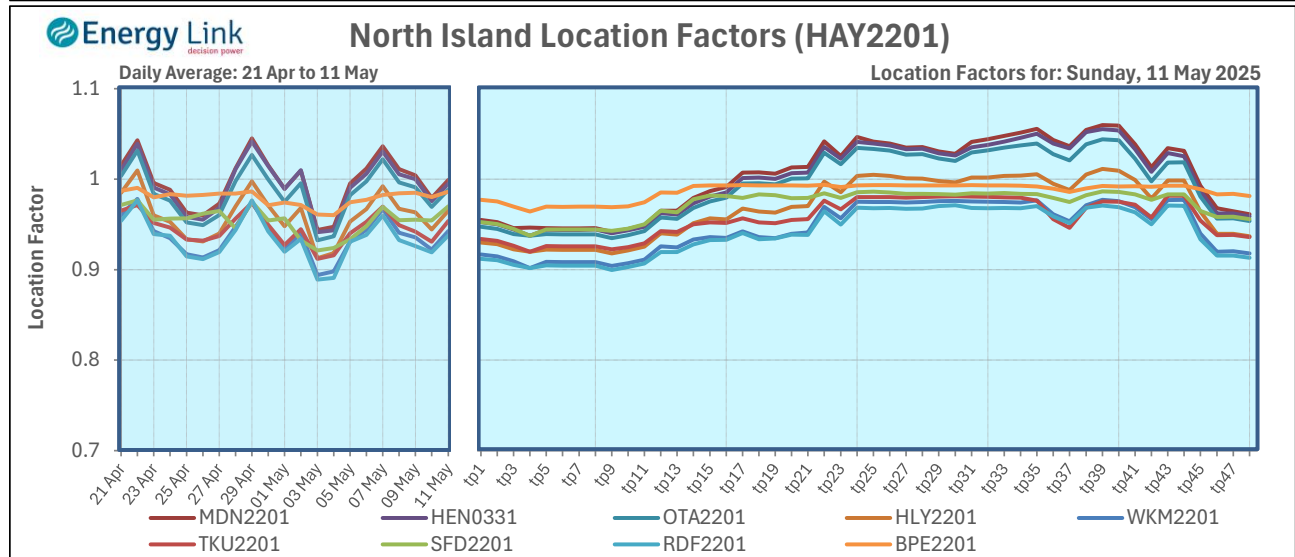
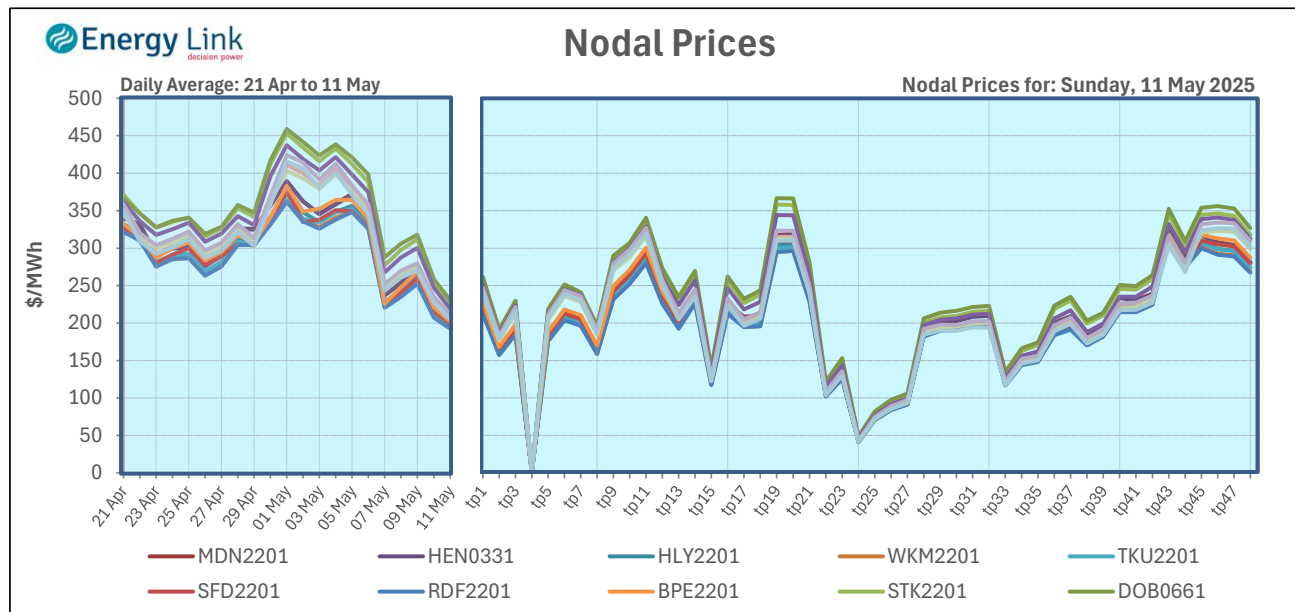
Hydro	Ave MW	Range (MW)
Waikato	294	72 - 577
Tongariro	83	45 - 201
Waitaki	549	339 - 793
Takapō	125	75 - 155
Clutha	403	253 - 526
Manapōuri	457	331 - 510
Wind Farms	206	51 - 349

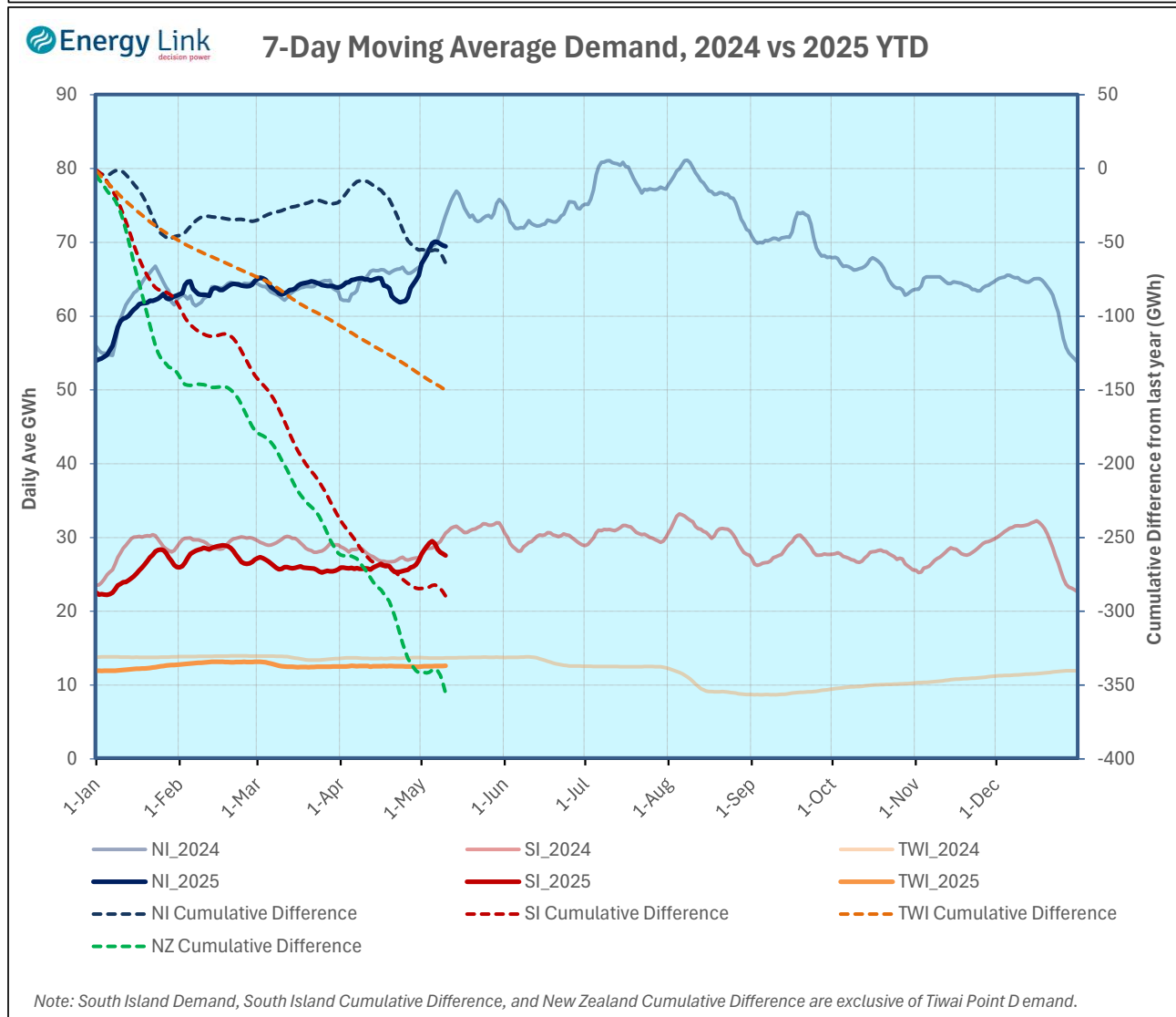
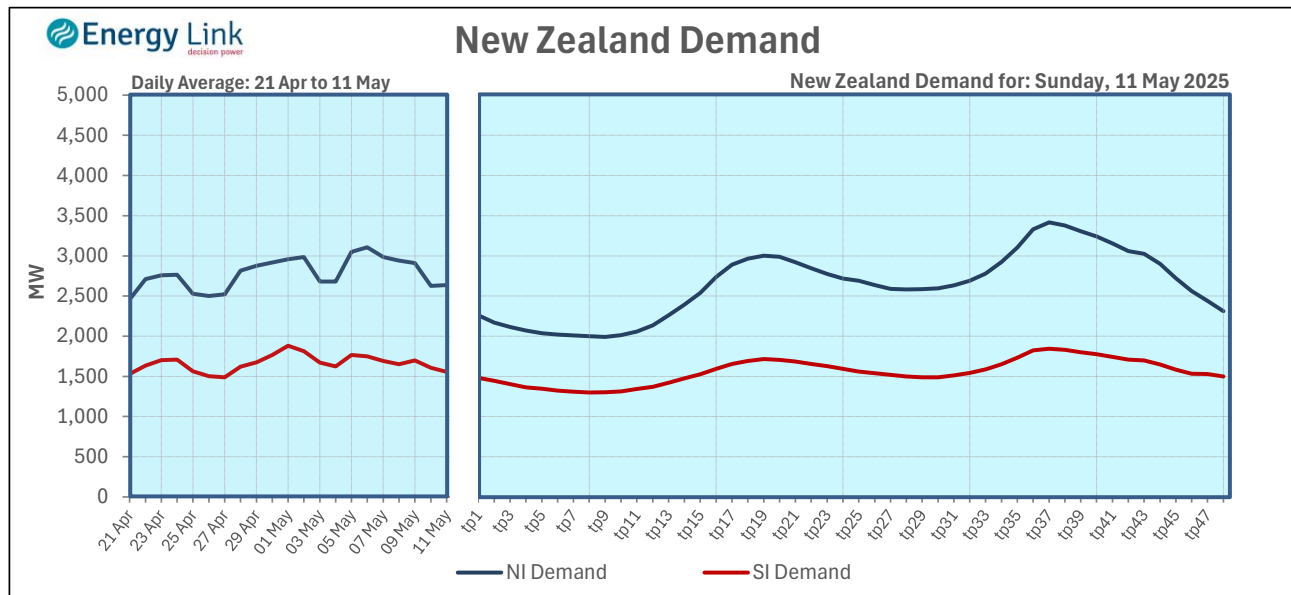
Wind Farms includes: Te Uku, West Wind, Te Āpiti, Taranuas, White Hills, Waipipi, Mill Creek, Te Rere Hau, and Harapaki.

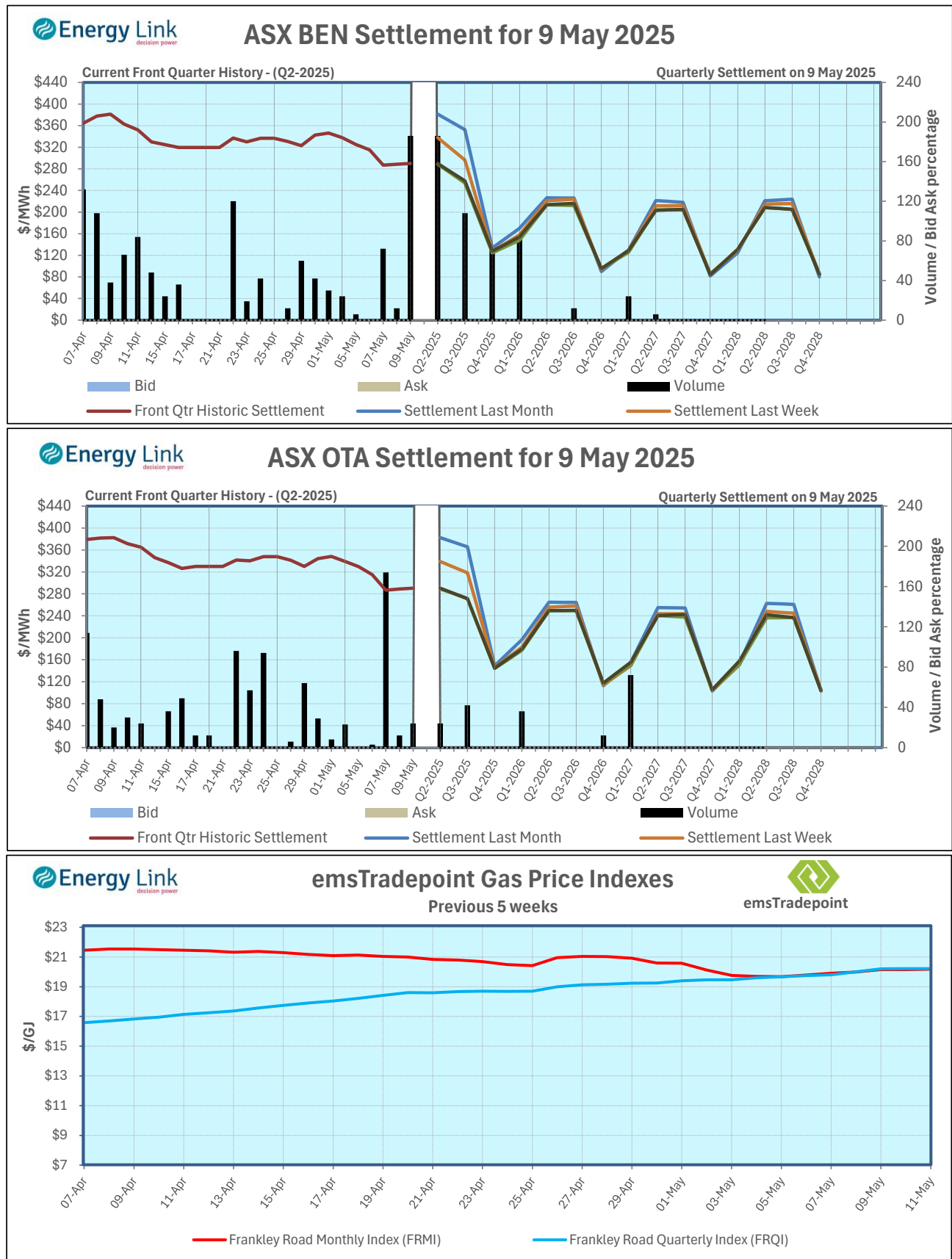


Note: For the purposes of this chart, renewable generation is all hydro, geothermal, wind and grid scale solar.
Co-generation is counted as thermal generation even though the carbon may be attributed to other industries.

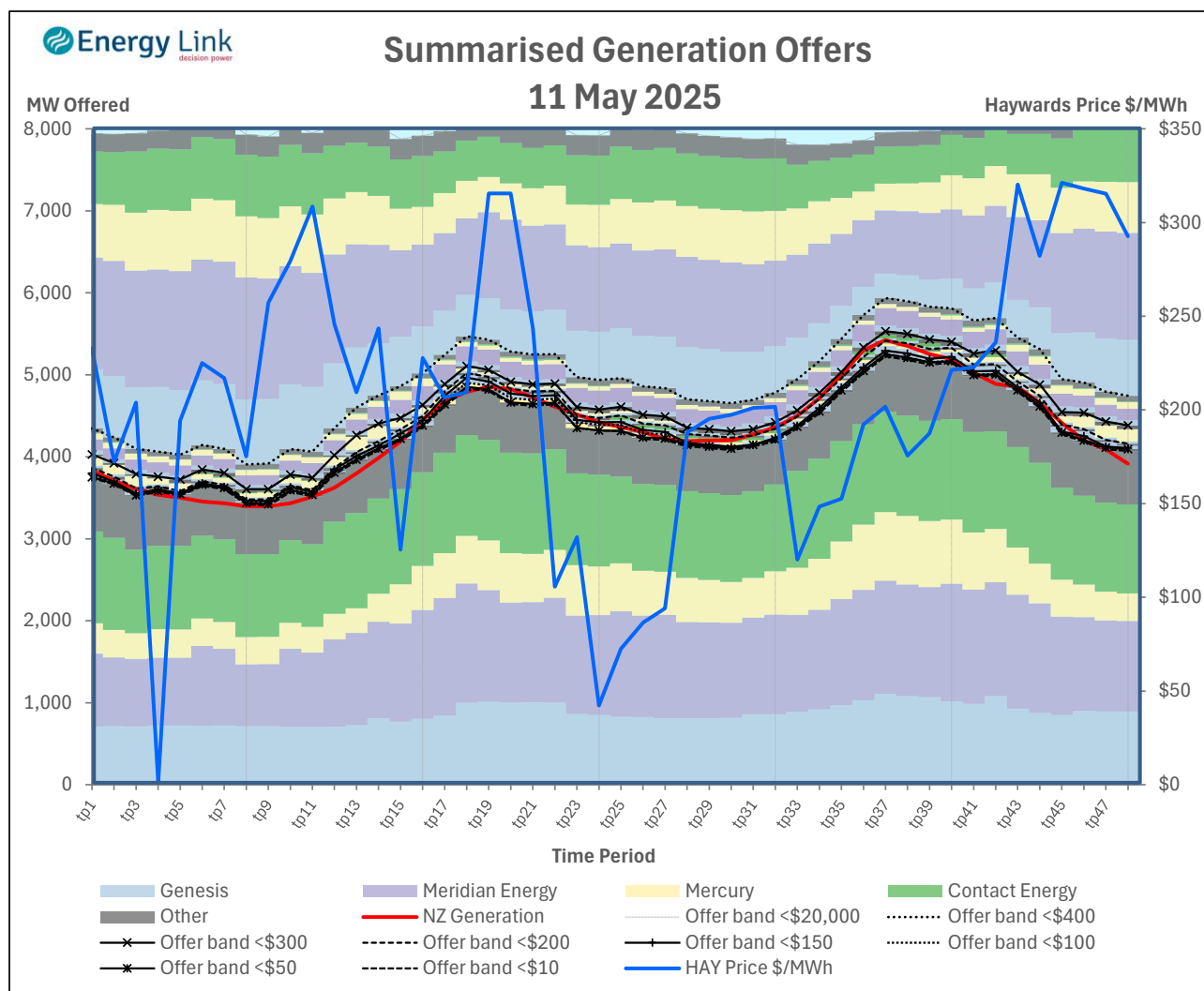








Note: emsTradepoint prices and indices are inclusive of the cost of carbon.



Summarised Generation Offers

The chart above shows the quantities of generation offered into the market by individual generators, between pre-defined offer bands. The 8 offer bands displayed are;

\$400 - \$20,000	— Offer band <\$20,000
\$300 - \$400 Offer band <\$400
\$200 - \$300	—x— Offer band <\$300
\$150 - \$200	----- Offer band <\$200
\$100 - \$150	—+— Offer band <\$150
\$50 - \$100 Offer band <\$100
\$10 - \$50	—*— Offer band <\$50
\$0 - \$10	----- Offer band <\$10

The region below each offer band contains all the generation offer quantities between the two prices (identified as various black lines), displayed as a generator total (regardless of station). The order of the generators within each offerband is the same and does not represent offer stack order, e.g if viewed within an offer band, Contact being above Mercury does not mean that Contact's offers were higher than Mercury's.

NZ Generation has been used to represent demand so that losses can be taken into account, however it is not total generation as not all embedded or wind generation data is available, also marginal losses and lines constraints are not represented. Therefore the NZ Generation line will not necessarily represent the price.

NZ Generation (red line) and the Haywards price (blue line) are plotted on the chart to assist in interpretation. The price on the second axis relates to the blue 'Haywards Price' line only.